

Rittal – The System.

Faster – better – everywhere.

► Certified System Integrator



ENCLOSURES

POWER DISTRIBUTION

CLIMATE CONTROL

IT INFRASTRUCTURE

SOFTWARE & SERVICES

FRIEDHELM LOH GROUP





Certified System Integrator

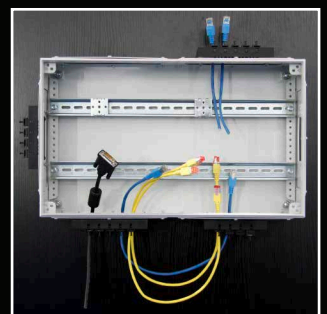
Rittal is a leader in the design and supply of technically sophisticated enclosure solutions. This philosophy of design places emphasis on the user's ability to customize the solution to their specific requirement and to be able to do it with standard, off the shelf enclosures and accessories.

At Rittal Systems we embrace this philosophy through extensive support via our Technical Representatives and our internal Technical Services Group. This team of technical professionals (CET's) provide full application development expertise, bill of material generation and 2D and 3D cad support. This support is further extended by our production team whereby they will fully assemble and integrate the Rittal enclosures and accessories including custom cutouts, painting and other configuration services.

As a next level of technical sophistication we would like to be able to offer to our customers a level of assurance that the System Integration partners they select are knowledgeable, experienced and proficient in specifying and integrating Rittal enclosure solutions.

Rittal's Certified System Integrator program is intended to formally recognize and certify System Integrators that have demonstrated proficiency in specifying and working with Rittal enclosure, climate control and power distribution systems.

If you would like to be one of Rittal's Certified System Integration partners, please contact your local Technical Representative.



Certified System Integrator



Certification Classifications

- **Certified Enclosure and Climate Control Integrators**
- **Certified Power Distribution Integrators**

Requirements:

Technical Capabilities

- AutoCAD proficiency for creation/manipulation of enclosure drawings
- In-house Rittal Specialist

Initial & On-going Training

- Rittal University Completion, Webinar Training Participation, Lunch and Learn's quarterly

Software Proficiency

- Ability to utilize Therm for climate control specification
- Power Distribution integrators are able to use Power Engineering (Training provided by Rittal's Technical Services Group)

Business Planning

- Creation of an annual business plan with Rittal
- Commitment to planned sales volume

Benefits to the Certified System Integrator

- Listing as a Certified Rittal Systems Integrator on www.rittal.ca website
- Formal recognition letter of their status as a certified integrator on Rittal letterhead that they can use in soliciting business
- Priority training on Rittal product solutions and specification tools
- Rittal Certified Systems Integrator Plaque identifying them as a certified partner of Rittal

Rittal – The System.

Faster – better – everywhere.

- Enclosures
- Power Distribution
- Climate Control
- IT Infrastructure
- Software & Services

Rittal Systems Ltd.

6485 Ordan Drive • Mississauga Ontario L5T 1X2 • Canada
Phone: 905-795-0777 • Fax: 905-795-9548 • Toll-free: 800-399-0748
Email: marketing@rittal.ca • Online: www.rittal.ca

Rittal Corporation

1 Rittal Place • Urbana Ohio 43078 • USA
Woodfield Corporate Center • 425 North Martingale Road, Suite 400 • Schaumburg Illinois 60173 • USA
Phone: 937-399-0500 • Fax: 800-477-4003 • Toll-free: 800-477-4000
Email: rittal@rittal.us • Online: www.rittal.us

ENCLOSURES

POWER DISTRIBUTION

CLIMATE CONTROL

IT INFRASTRUCTURE

SOFTWARE & SERVICES



FRIEDHELM LOH GROUP