

# Rittal – The System.

Faster – better – worldwide.

## ► The new base/plinth system Flex-Block



ENCLOSURES

POWER DISTRIBUTION

CLIMATE CONTROL

IT INFRASTRUCTURE

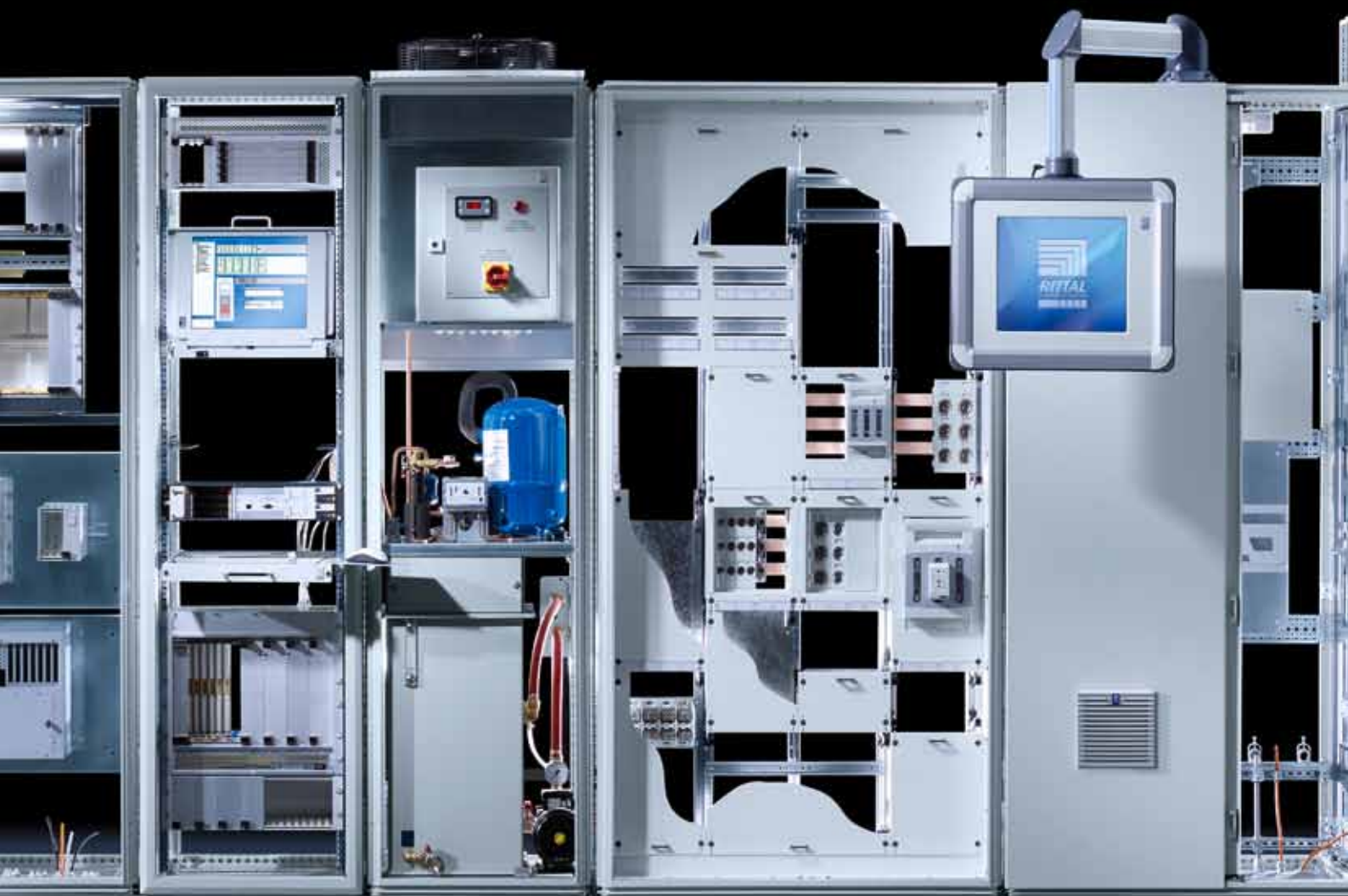
SOFTWARE & SERVICES

FRIEDHELM LOH GROUP



# Rittal – The System.

Faster – better – worldwide.



ENCLOSURES

POWER DISTRIBUTION

CLIMATE CONTROL

FRIEDHELM LOH GROUP

# Systematic!

Everything we do centres around the benefits to you. With you in mind, we have developed a perfectly coordinated system platform that unites innovative products, pioneering engineering solutions and comprehensive service. This is complemented by a range of accessories that may be used throughout the entire system. Allow us to convince you with the new

## **Flex-Block base/plinth system:**

- **Fast** – Speed up your enclosure construction with fast, tool-free assembly
- **Convenient** – Enhanced user-friendliness in terms of transportation and siting
- **Efficient** – Assembly and logistics processes designed for significant time and cost savings
- **Modular** – For enclosure systems TS 8, SE 8, TS IT, CM, PC and TP



ENCLOSURES

POWER DISTRIBUTION

CLIMATE CONTROL

FRIEDHELM LOH GROUP





# Fast!

## Tool-free assembly

- **Tool-free** – Base/plinth assembly in less than 30 seconds
- **Easy** – Simply clip the front and side trim panels into position
- **Convenient** – Baying by hand with clip attachment
- **Anti-twist** – Simple positioning on the enclosure with a positioning aid
- **Fast** – Clip the punched rails into place for cable routing

IT INFRASTRUCTURE

SOFTWARE & SERVICES





**ENCLOSURES**

**POWER DISTRIBUTION**

**CLIMATE CONTROL**

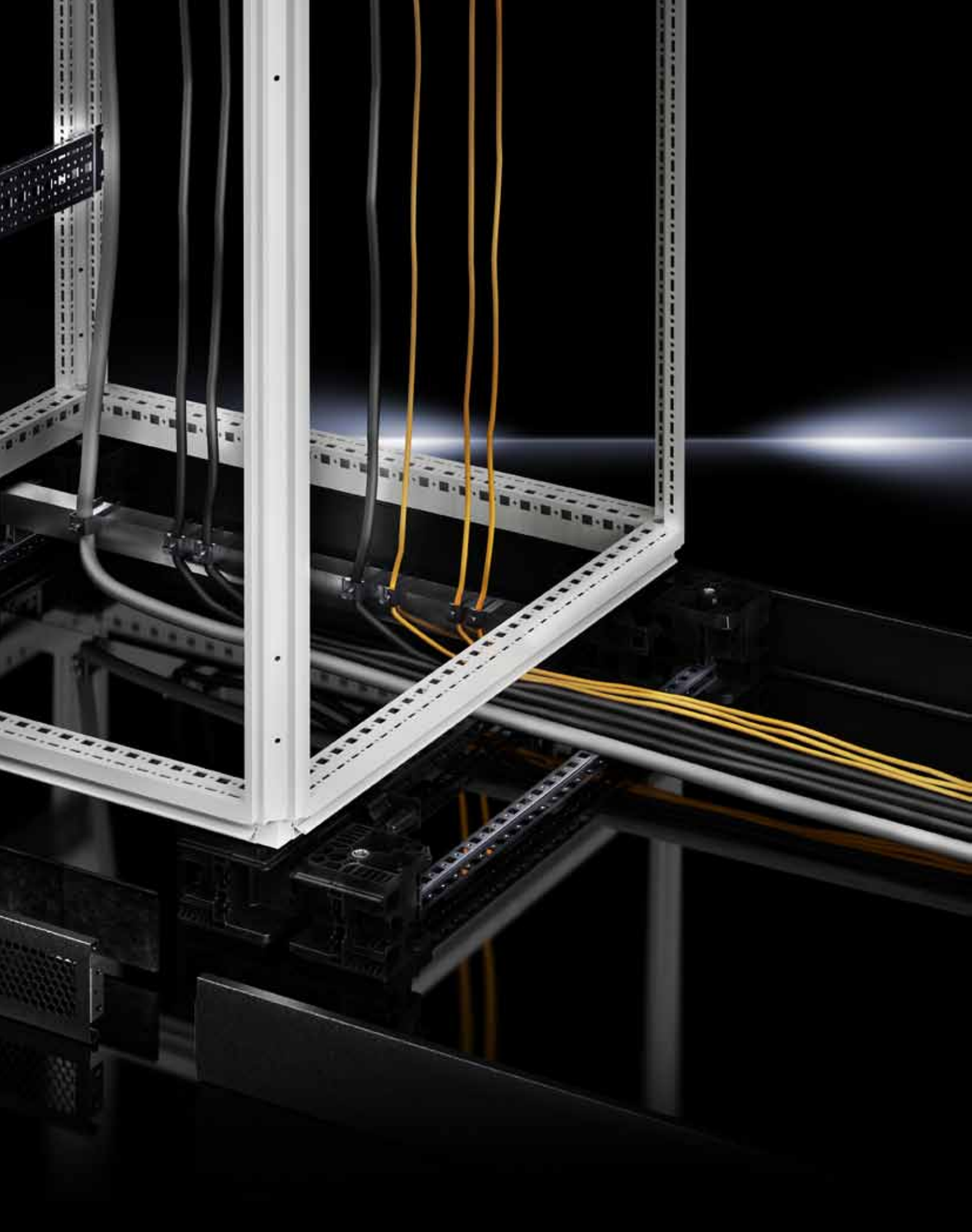
FRIEDHELM LOH GROUP



# Mobile!

## Simple transportation from A to B, even without a pallet

- **Suitable** – For forklifts and lifting trucks. Simply remove trim panels on opposite sides and position beneath the enclosure frame
- **Practical** – This reduces clearance heights by the height of the pallet
- **Faultless** – Trim panels are not fitted until the enclosure arrives at its final installation site, thus avoiding the risk of scratches and other visual defects



ENCLOSURES

POWER DISTRIBUTION

CLIMATE CONTROL

FRIEDHELM LOH GROUP





# Exceptional!

## Everything neat and tidy

- **Individual** – Trim panels are removable on all sides for cable entry
- **Tool-free** – Punched rails for cable clamp rails are fitted without the need for tools
- **Systematic** – With bayed base/plinths, individual panels may be fitted with cable clamp rails, all using system accessories; no machining required

IT INFRASTRUCTURE

SOFTWARE & SERVICES





ENCLOSURES

POWER DISTRIBUTION

CLIMATE CONTROL

FRIEDHELM LOH GROUP



# Extendible!

## Grows along with your requirements

- **Simple** – The Flex-Block may be raised to 200 mm by stacking
- **Independent** – The base/plinth may be mounted retrospectively at the installation site
- **Flexible** – Corner pieces and trim panels may be ordered separately
- **Space-saving** – Minimal storage space requirements
- **Uniform** – The trim panels have identical dimensions in the width and depth
- **Optional** – If preferred, the trim panels can also be omitted completely

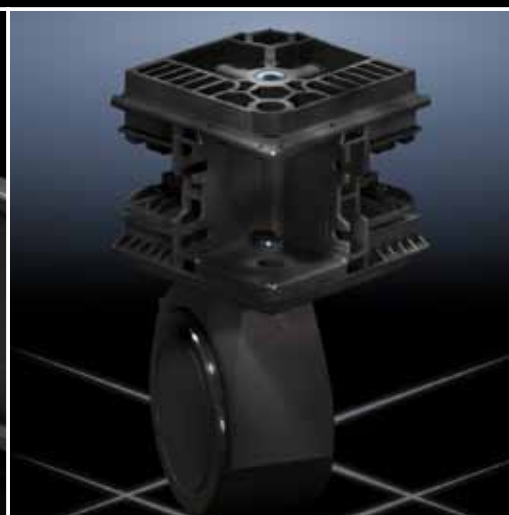


ENCLOSURES

POWER DISTRIBUTION

CLIMATE CONTROL

FRIEDHELM LOH GROUP



# Strong!

## No load too heavy

- **Secure** – Thanks to the large contact surface between the Flex-Block corner piece, the floor and the enclosure (trim panels may be clipped into position afterwards)
- **Load capacity** – High load capacity of up to 15,000 N
- **Resilient** – With high-quality materials





**ENCLOSURES**

**POWER DISTRIBUTION**

**CLIMATE CONTROL**

FRIEDHELM LOH GROUP

# 64 international subsidiaries

# Global!

## The right solution, worldwide

- **Industry-specific** – Competent, global expertise
- **Uniform** – Worldwide standards, compatibility and availability
- **International** – Approvals
- **Outstanding** – Complete logistics
- **Service** – On site, with 5 global support points, more than 250 service partners and over 1,000 service engineers

IT INFRASTRUCTURE

SOFTWARE & SERVICES



# Rittal – The System.

**Faster – better – worldwide.**

- Enclosures
- Power Distribution
- Climate Control
- IT Infrastructure
- Software & Services

## **Sweden**

RITTAL Scandinavian ab  
Rittalgatan 1 · SE-262 73 Ängelholm  
Phone: +46 (0)431 44 26 00 · Fax: +46 (0)431 44 26 44  
E-mail: [info@rittal.se](mailto:info@rittal.se) · [www.rittal.se](http://www.rittal.se)

## **Norway**

RITTAL AS  
Postboks 258 · N-1401 Ski  
Besøksadresse: Regnbueveien 10 · N-1405 Langhus  
Phone: +47 (0)64 85 13 00 · Fax: +47 (0)64 85 13 01  
E-mail: [rittal@rittal.no](mailto:rittal@rittal.no) · [www.rittal.no](http://www.rittal.no)

## **Denmark**

RITTAL A/S  
Dybendalsvænget 4 · DK-2630 Taastrup  
Phone: +45 (0)70 25 59 00 · Fax: +45 (0)70 25 59 01  
E-mail: [info@rittal.dk](mailto:info@rittal.dk) · [www.rittal.dk](http://www.rittal.dk)

ENCLOSURES

POWER DISTRIBUTION

CLIMATE CONTROL

IT INFRASTRUCTURE

SOFTWARE & SERVICES

