

Rittal – The System.

Faster – better – everywhere.

Leipzig District Office: Model IT project in Saxony

CUSTOMER REFERENCES

Information technology



Customer: Administration office for the Leipziger Land, Germany
Industry: Public Authority
Company size: more than 145.600 inhabitants
Headquarters: Borna

If its data centre fails, Leipzig District Office is out of action – it simply isn't possible to deal with applications, approvals or payments without IT. Following local reforms in Saxony, the Office gained a lot more responsibilities, which meant it needed a new data centre. Security rooms from Rittal deliver the essential structural requirements for protecting data and applications. The District Office is the local authority for

the district and exercises administrative duties on behalf of the state. Staff need to use special applications for a large number of tasks and procedures such as licensing vehicles, issuing driving licences and health certificates and calculating social security and unemployment benefits. Naturally, when managing sensitive data for residents, the priorities are security and high availability.



ENCLOSURES

POWER DISTRIBUTION

CLIMATE CONTROL

IT INFRASTRUCTURE

SOFTWARE & SERVICES

FRIEDHELM LOH GROUP

”



“The room-within-a-room solution from Rittal has saved us a lot of noise and dirt in our day-to-day work.”

Andrea Görnitz,
Head of IT at Leipzig District Office

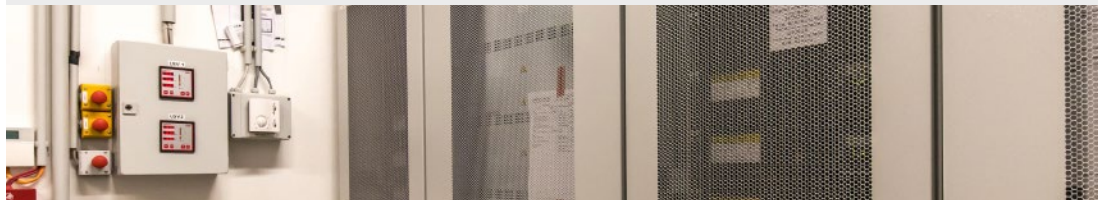
THE PROJECT

The Challenge

- High security requirements
- Ensure high data availability
- Cost- and energy-efficient operation

The Solution

- Safety room with adequate dimensioning, 150 server, 18 racks, UPS and fire extinguishing system
- Monitoring system CMC III for monitoring humidity and temperature



Room-within-a-room security

The new data centre had to be housed in an existing building. Instead of investing a large amount of time and money in conversion work, the IT officers and authority bosses opted for the LER Extend security room – a room-within-a-room solution – from Rittal. The interior is lined with wall and roof elements made from sheet steel and insulation material and a raised floor, which protects the systems inside from all physical threats such as fire, water, dust and smoke gases, electromagnetic interference and unauthorised access.

Smooth running throughout the switchover

Thanks to the redundancy built into the existing computer capacity, the project team was able to complete the move while systems were still running. All the hardware was reused and only had to be extended or renewed in a few instances. To be on the safe side, core applications that involved making payments to residents, for example, were migrated at the weekend.

Model project for other local authorities

News of the high-quality solution has spread throughout Saxony and beyond. IT officers from other local authorities are now visiting the installation to see how they can satisfy the high requirements regarding the security and availability of resident’s data and services while also running a cost-effective and energy-efficient data centre.

RITTAL GmbH & Co. KG
Postfach 1662 · D-35726 Herborn
Phone +49(0)2772 505-0 · Fax +49(0)2772 505-2319
info@rittal.de · www.rittal.de



ENCLOSURES

POWER DISTRIBUTION

CLIMATE CONTROL

IT INFRASTRUCTURE

SOFTWARE & SERVICES

FRIEDHELM LOH GROUP