

Rittal – The System.

Faster – better – everywhere.

► Depth stay for installation kit ISV for TS – SV 9666.731

Date : Sep 19, 2020

ENCLOSURES

POWER DISTRIBUTION

CLIMATE CONTROL

IT INFRASTRUCTURE

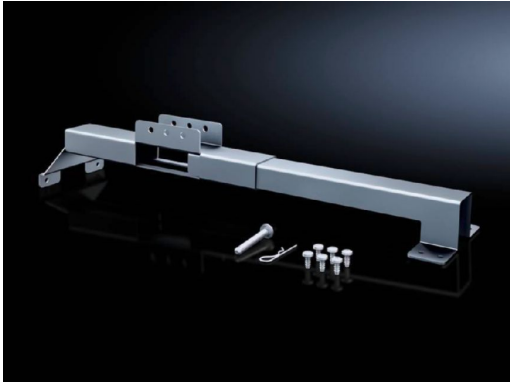
SOFTWARE & SERVICES

FRIEDHELM LOH GROUP



Depth stay for installation kit ISV for TS – SV 9666.731

created: 19.09.2020 build on www.rittal.com/in-en



Discontinued article.

This item will be discontinued on: 04.07.2018 |||This item is being replaced by: 9666732

Product description

Description: For attaching the installation kit in the TS enclosure.

Material: Sheet steel

Surface finish: Zinc-plated

Product features

To fit: Depth: = 400 mm
Depth: = 500 mm
Depth: = 600 mm
Model No.: 9666.901
Model No.: 9666.911
Model No.: 9666.921
Model No.: 9666.931

Packs of: 2 pc(s).

Weight/pack: 3 kg

Copper weight (kg per piece): 0

EAN: 4028177803572

Customs tariff number: 85389099

ETIM 7.0:	EC001900
ETIM 6.0:	EC001900
eCl@ss 8.0/8.1:	27400613
eCl@ss 6.0/6.1:	27400613
Product description:	SV Depth stay (ISV), for TS (D: 400/500/600 mm)