

Rittal – The System.

Faster – better – everywhere.

► Wall-Mount Network Enclosure with glazed door, with 482.6 mm (19") mounting angles – AE 9790.764

Date : Sep 24, 2020

ENCLOSURES

POWER DISTRIBUTION

CLIMATE CONTROL

IT INFRASTRUCTURE

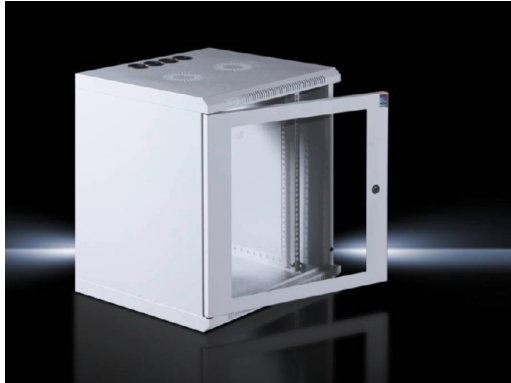
SOFTWARE & SERVICES

FRIEDHELM LOH GROUP



Wall-Mount Network Enclosure with glazed door, with 482.6 mm (19") mounting angles – AE 9790.764

created: 24.09.2020 build on www.rittal.com/in-en



Product description

Description:	Pre-configured Wall-mounted enclosure for small networks
Benefits:	Pre-configured 19" Wall-Mount Enclosure for small networks Passive ventilation with vent slots
Material:	Enclosure: Sheet steel
Surface finish:	Enclosure: Powder-coated Mounting angles: Zinc-plated
Colour:	RAL 7035
Supply includes:	Wall-Mount Enclosure with front glass door Key lock arrangement Top and bottom with vents 4 rubber grommets for cable entry, Ø 50 mm Integrated side panels Mounting provision for two fans 482.6 mm (19") mounting angles Captive hardware (20 captive nuts, 20 screws, 20 washers)

Product features

Dimensions:	Width: 600 mm Height: 631 mm Depth: 500 mm
Installation height for components:	12 U

Door hinge: right, may be swapped to the left

Packs of: 1 pc(s).
