

Rittal – The System.

Faster – better – everywhere.

► Gland plate modules for cable entry for TS, TS IT, SE – DK 7825.388

Date : Sep 26, 2020

ENCLOSURES

POWER DISTRIBUTION

CLIMATE CONTROL

IT INFRASTRUCTURE

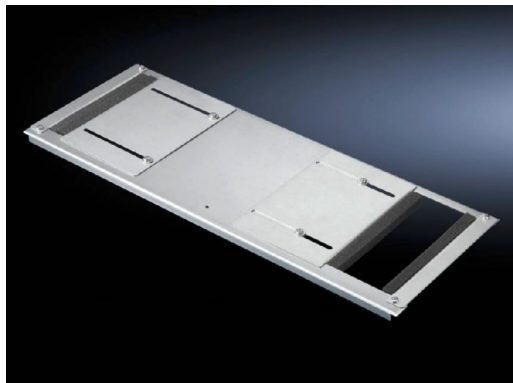
SOFTWARE & SERVICES

FRIEDHELM LOH GROUP



Gland plate modules for cable entry for TS, TS IT, SE – DK 7825.388

created: 26.09.2020 build on www.rittal.com/nz-en



Product description

Design:	Version for cable entry with rubber cable clamp strip at the sides:
Description:	With adjustable openings on both sides and rubber cable clamp strip. The two-piece design even allows retrospective fitting of the base module with the cables already installed.
Material:	Sheet steel Seal: Polyurethane foam, UL 94-HF1
Surface finish:	Zinc-plated
Supply includes:	Assembly parts Including clips
Note:	Several gland module plates need to be combined to close off the base completely in the TS-IT

Product features

To fit:	Enclosure type: TS IT Width: 800 mm
Dimensions:	Depth: 237.5 mm
Packs of:	1 pc(s).
Weight/pack:	2.62 kg

Copper weight (kg per piece):	0
EAN:	4028177597679
Customs tariff number:	94039010
ETIM 7.0:	EC002620
ETIM 6.0:	EC002620
eCl@ss 8.0/8.1:	27189261
eCl@ss 6.0/6.1:	27182003
Product description:	DK Gland plate module, For W: 800 mm, For side cable entry