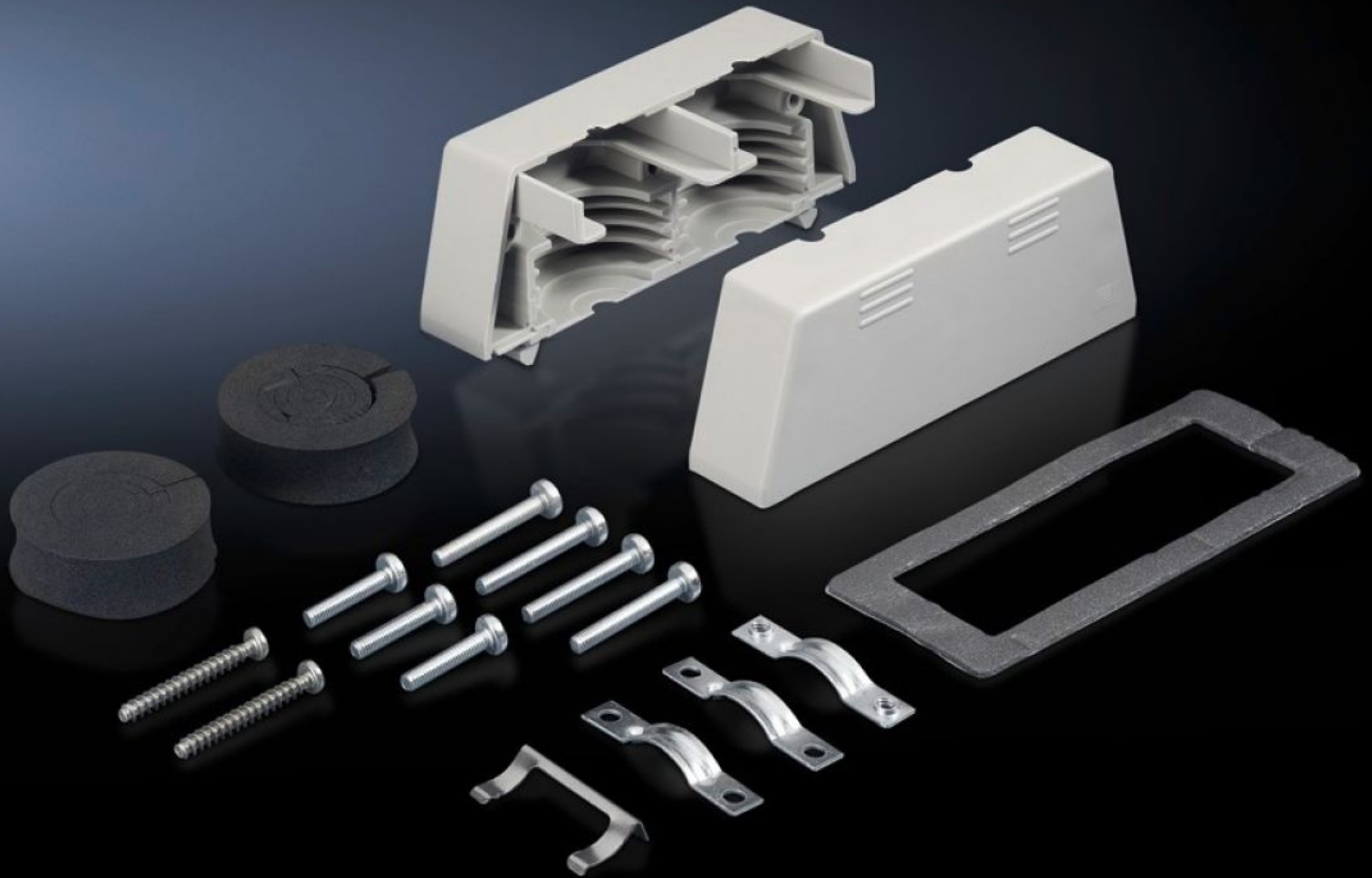


# Rittal – The System.

Faster – better – everywhere.



## SZ 2400.000 Connector gland

State: 4/04/2026 (Source: [rittal.com/au-en](http://rittal.com/au-en))

ENCLOSURES

POWER DISTRIBUTION

CLIMATE CONTROL

IT INFRASTRUCTURE

SOFTWARE & SERVICES

FRIEDHELM LOH GROUP



# SZ 2400.000 - Connector gland for connector cut-outs (24-pole)

For the entry of 2 pre-assembled cables in the connector cut-out, without dismantling the connector.

## Features

Model No.	SZ 2400.000
Product description	For the entry of 2 pre-assembled cables in the connector cut-out, without dismantling the connector.
Material	Enclosure: Plastic Clamps: Sheet steel
Surface finish	Clamps: Zinc-plated
Supply includes	2 half shells Mounting clamp Assembly parts
Dimensions	Width: 142 mm Height: 50 mm Depth: 54 mm
For cable diameters	8 - 36 mm
Packs of	1 pc(s).
Net weight	0.27 kg
Gross weight	0.291 kg
PCF per pack (cradle-to-gate)	1.1 kg CO2 eq (Cat B)
Note on PCF category	Category B: PCF value (cradle-to-gate) based on the product weight, approximately calculated and self-declared
Customs tariff number	39269097
ETIM 9	EC000211
ETIM 8	EC000211
ECLASS 8.0	27142421

# Features

---

Product description

SZ Connector gland, for connector pads (24-pole), for cables  $\varnothing$  8-36 mm