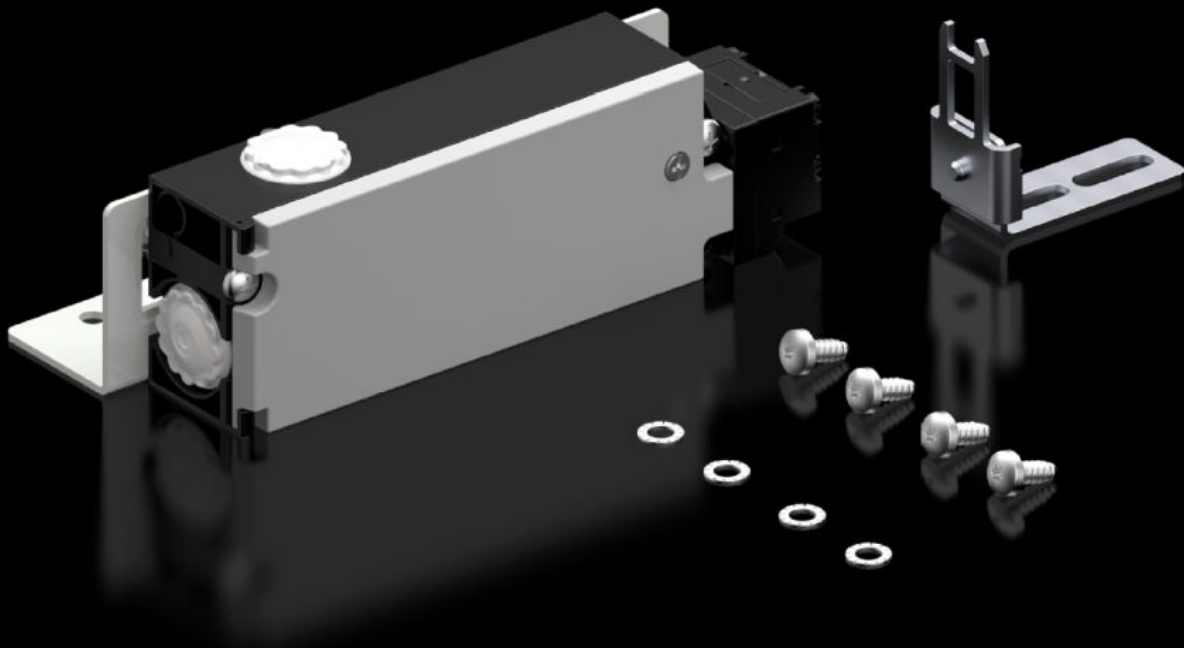


# Rittal – The System.

Faster – better – everywhere.



## SZ 2416.000

# Safety lock

State: 30/05/2026 (Source: [rittal.com/au-en](http://rittal.com/au-en))

ENCLOSURES

POWER DISTRIBUTION

CLIMATE CONTROL

IT INFRASTRUCTURE

SOFTWARE & SERVICES

FRIEDHELM LOH GROUP



# SZ 2416.000 - Safety lock

Fitted to doors, to protect against contact with live electrical equipment whilst the master switch is ON.

## Features

|   |  |
|---|--|
| Model No.                                       | SZ 2416.000  |
| Product description                             | Fitted to doors, to protect against contact with live electrical equipment whilst the master switch is ON.   |
| Function principle                              | Locks the door when the master switch is ON.<br>Mains power (voltage) is only enabled whilst the door is closed.<br>Monitoring of the lock magnet via an additional closing contact. |
| Supply includes                                 | Lock<br>Actuator<br>Angle bracket<br>Assembly parts  |
| Assembly instruction                            | In two-door enclosures, the door-operated switch is required for the overlapping door, to indicate "enclosure door closed"   |
| To fit  | Enclosure type: VX<br>Enclosure type: VX SE<br>Enclosure type: TS<br>Enclosure type: AX  |
| Power consumption Pel                           | At 50 Hz: 11 VA<br>At 60 Hz: 11 VA   |
| Rated operating voltage                         | 230 V  |
| Rated insulation voltage                        | 400 V AC   |
| Rated impulse withstand voltage, phase to phase | 4000 V AC  |
| Packs of  | 1 pc(s).   |
| Net weight                                      | 0.7 kg   |
| Gross weight                                    | 0.821 kg   |
| Customs tariff number                           | 85365080   |

# Features

---

|                     |                          |
|---------------------|--------------------------|
| ETIM 9              | EC002626                 |
| ETIM 8              | EC002626                 |
| ECLASS 8.0          | 27189266                 |
| Product description | SZ Safety lock, 230 V AC |

---

# Approvals

---

|              |   |
|--------------|---|
| Approvals    | CSA<br>UL   |
| Explanations | Declaration of conformity<br>Declaration of conformity UK |

---