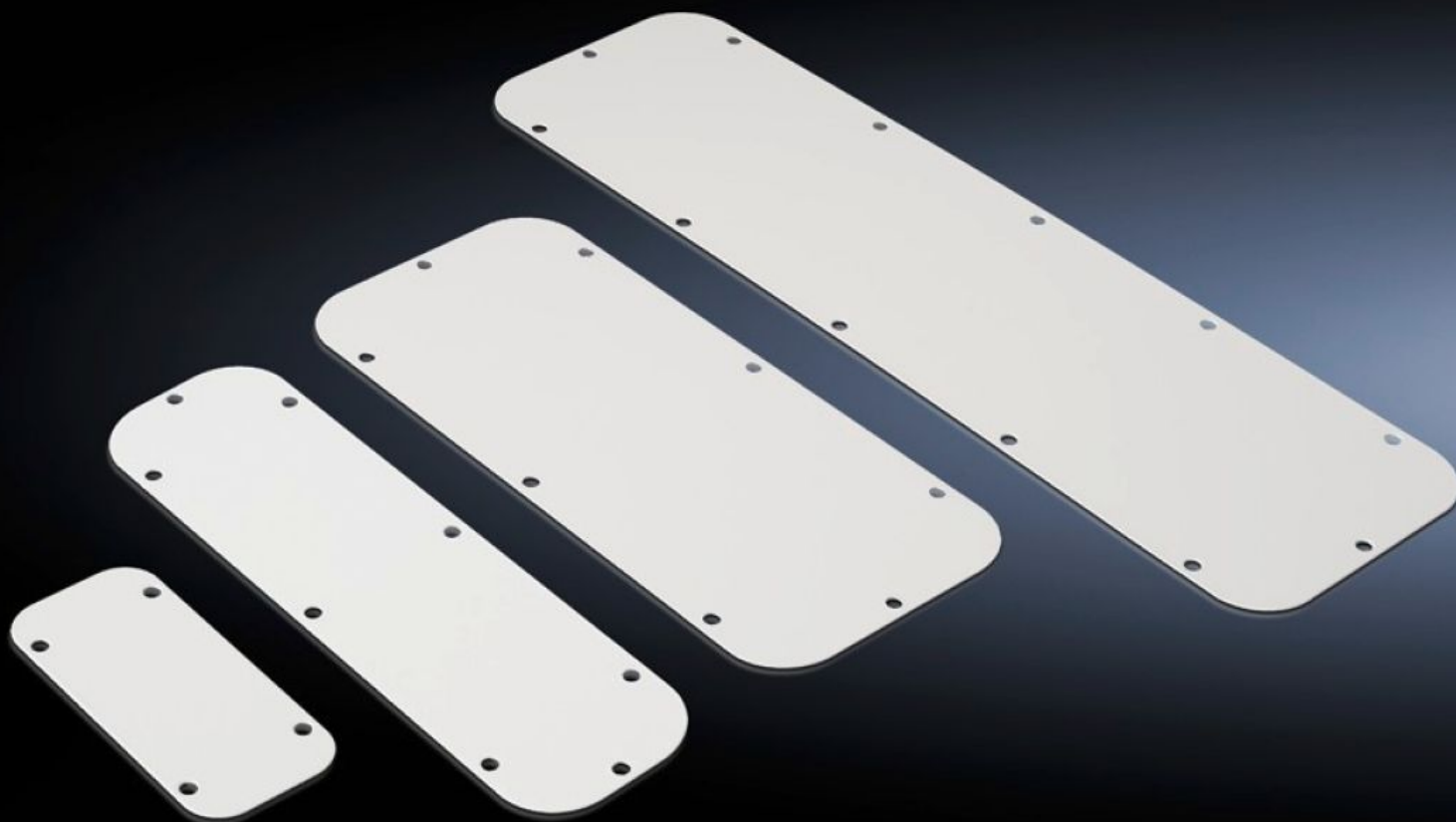


# Rittal – The System.

Faster – better – everywhere.



## SZ 2560.400 Metal gland plate

State: 30/08/2025 (Source: [rittal.com/au-en](https://www.rittal.com/au-en))

ENCLOSURES

POWER DISTRIBUTION

CLIMATE CONTROL

IT INFRASTRUCTURE

SOFTWARE & SERVICES

FRIEDHELM LOH GROUP



# SZ 2560.400 - Metal gland plate

As spare/replacement part for the standard gland plates supplied loose, IP 66 when mounting in the usual position at the bottom.

## Features

Model No.	SZ 2560.400
Design	solid
Product description	As spare/replacement part for the standard gland plates supplied loose.
Material	Sheet steel
Colour	RAL 7035
Note	The allocation of gland plate sizes is indicated on the relevant enclosures
Dimensions	Width: 160 mm Depth: 70 mm
To fit	Enclosure type: AE
Gland plate	Size: 1
Protection category to IEC 60 529	IP 66 when mounting in the usual position at the bottom
Packs of	1 pc(s).
Net weight	0.119
Gross weight	0.128
Customs tariff number	73079100
EAN	4028177510142
ETIM 9	EC000211
ETIM 8	EC000211
ECLASS 8.0	27142421