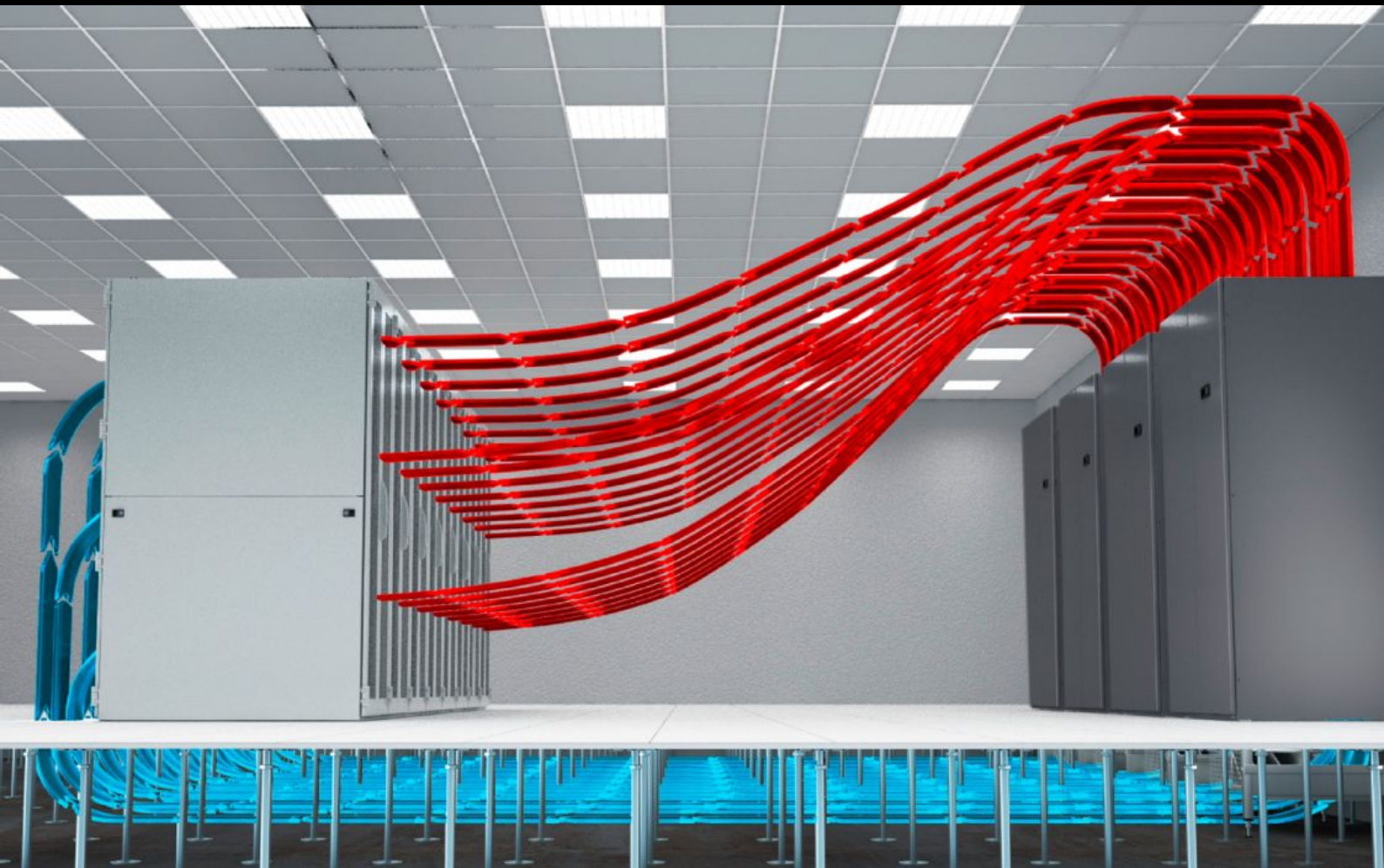


Rittal – The System.

Faster – better – everywhere.



SK 3300.599

IT room cooling

State: 7/12/2025 (Source: [rittal.com/au-en](https://www.rittal.com/au-en))

ENCLOSURES

POWER DISTRIBUTION

CLIMATE CONTROL

IT INFRASTRUCTURE

SOFTWARE & SERVICES

FRIEDHELM LOH GROUP



SK 3300.599 - IT room cooling CRAH Units CW / CRAC Units DX

Dependable and energy-efficient room cooling for data centres, with maximum precision and fail-safe operation. The CyberAir 3PRO CW, CyberAir 3PRO DX and CyberAir Mini CW room cooling systems from the Stulz portfolio.

Features

Model No.	SK 3300.599
Benefits	<p>Maximum savings potential thanks to indirect dynamic free cooling or direct free cooling</p> <p>Low noise emissions thanks to optimised unit design and EC fans</p> <p>Enormous energy savings thanks to EC technology and the largest possible heat exchanger and filter areas</p> <p>Maximum cooling output with a minimum footprint</p> <p>Highly efficient air routing (airflow efficiency ratio)</p> <p>Available with integrated and external fan unit (DX)</p> <p>5 cooling systems, 6 sizes, different air routing options, various heat exchangers (DX)</p> <p>Cold-water climate-control system available with integrated and external fan unit (CW)</p> <p>2 cooling systems (CW, CW2), 11 sizes, different air routing options, various heat exchangers (CW)</p>

Features

Design	<p>CyberAir Mini is an energy-efficient and noise-optimised range of units for small to medium heat loads. These state-of-the-art and maintenance-friendly units have a small footprint and can easily be incorporated into pre-existing spaces thanks to their compact dimensions. Total cooling output (kW): 9 – 35</p> <p>The CyberAir 3PRO CW controls the climate in data centres with exceptional precision, fail-safe operation and energy efficiency. The technological leadership of Stulz helps deliver maximum savings potential in tandem with ultimate reliability. The CyberAir 3PRO CW cold-water climate-control unit is as flexible and customised as data centres are diverse. The various versions of this precision climate-control enclosure are available in 11 sizes with different air routing options. Total output of the cold-water climate-control unit (kW): 22 – 260</p> <p>The CyberAir 3PRO DX takes the exceptionally successful CyberAir 3 range to the next level. More than three decades of project experience all over the world has been incorporated into this room climate-control system. To achieve maximum cooling output with a minimum footprint and thus maximise your potential savings, the CRAC systems offer better adaptability than any other precision climate-control unit on the market. Refrigerant: R410A (GWP: 2088); R407C (GWP: 1774); R134a (GWP: 1430). Total cooling output (kW): 22 – 150</p>
Note	The CW and DX room cooling systems are designed and quoted on a project-specific basis
Packs of	1 pc(s).
Customs tariff number	84186900
EAN	4028177963948
ETIM 9	EC002515