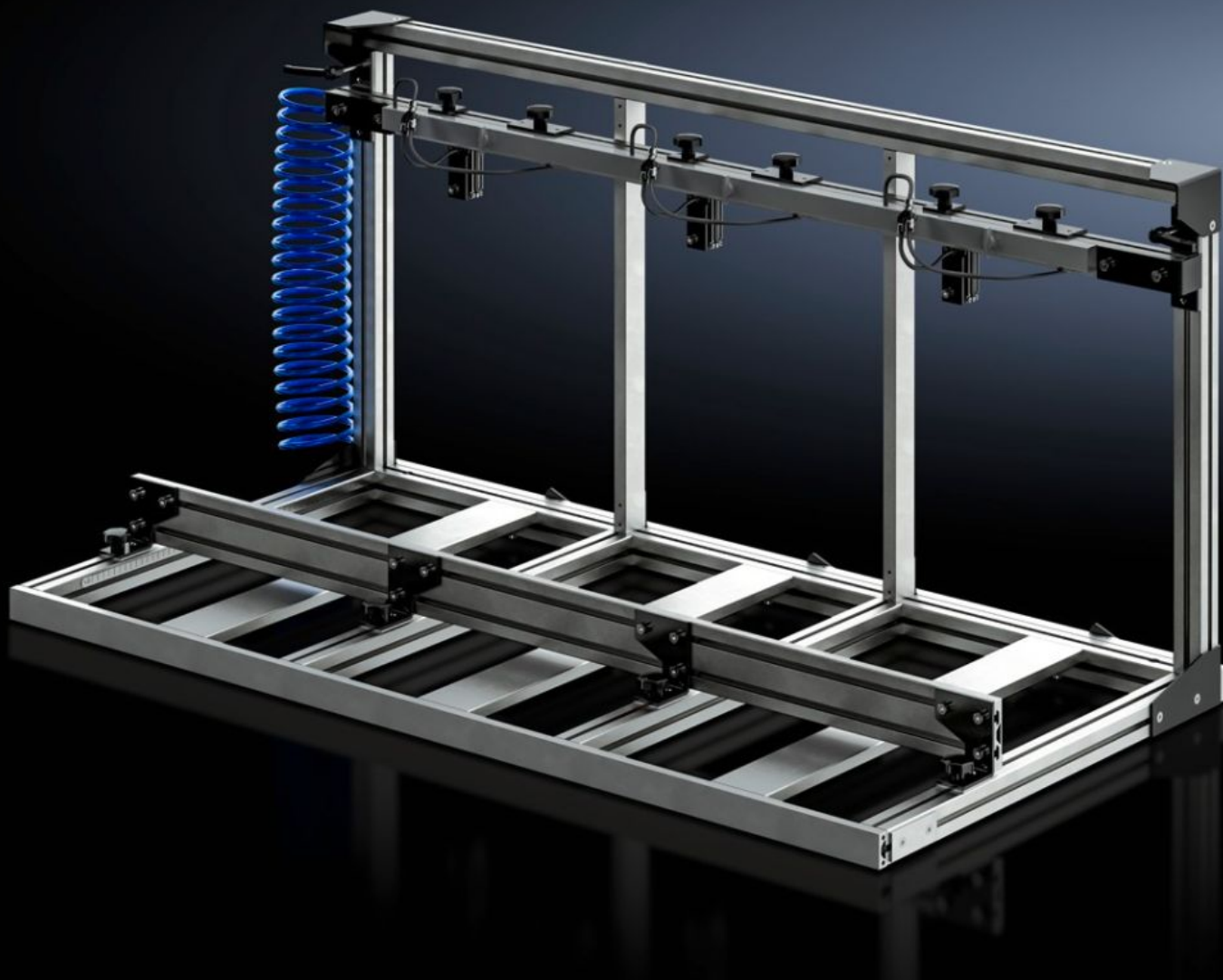
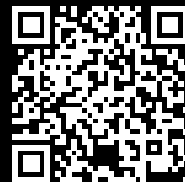


# Rittal – The System.

Faster – better – everywhere.



## AS 4050.062 Clamping frame

State: 8/12/2025 (Source: [rittal.com/au-en](http://rittal.com/au-en))

ENCLOSURES

POWER DISTRIBUTION

CLIMATE CONTROL

IT INFRASTRUCTURE

SOFTWARE & SERVICES

FRIEDHELM LOH GROUP



# AS 4050.062 - Clamping frame

Parallel machining of enclosures in the cube machining zone of Perforex machining centres BC and Perforex milling terminals MT for shorter setup times and enhanced productivity.

## Features

|   |   |
|---|---|
| Model No.   | AS 4050.062   |
| Design  | Pneumatic clamping device   |
| Product description                                       | Enables parallel cube machining of enclosures on Perforex machining centres BC and Perforex milling terminals MT.                                     |
| Possible number of terminal Boxes for parallel processing | 3   |
| Note  | Use of the clamping frame (Model No. 4050.080) in the machining centre BC (Model No. 4050.230) is only possible with the two-door variant.            |
| To fit Model No.  | 4050.107<br>4050.108<br>4050.230<br>4055.920<br>4055.921<br>4055.925<br>4055.926  |
| Suitable for  | Perforex BC 1007 HS<br>Perforex BC 1008 HS<br>Perforex BC 2014 HS<br>Perforex MT 2101<br>Perforex MT 2101 S<br>Perforex MT 2201<br>Perforex MT 2201 S |
| Dimensions of clampable enclosures max.                   | Width: 370 mm<br>Height: 440 mm<br>Depth: 600 mm  |
| Dimensions of clampable enclosures min.                   | Width: 90 mm<br>Height: 90 mm<br>Depth: 90 mm   |

# Features

|                       |               |
|-----------------------|---------------|
| Packs of              | 1 pc(s).      |
| Net weight            | 25            |
| Gross weight          | 25            |
| Customs tariff number | 84669360      |
| EAN                   | 4028177804326 |
| ETIM 9                | EC003010      |
| ETIM 8                | EC003010      |
| ECLASS 8.0            | 36609190      |