

# Rittal – The System.

Faster – better – everywhere.



## AS 4051.234 Wire rail WT

State: 12/05/2026 (Source: [rittal.com/au-en](http://rittal.com/au-en))

ENCLOSURES

POWER DISTRIBUTION

CLIMATE CONTROL

IT INFRASTRUCTURE

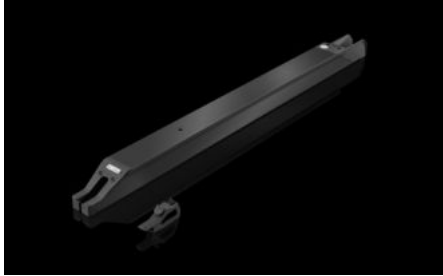
SOFTWARE & SERVICES

FRIEDHELM LOH GROUP



# AS 4051.234 - Wire rail WT

The pre-assembled wires are fed into the WT 35 wire rail with a cross-section of 1.5 mm<sup>2</sup> by the removal handling system.



## Features

Model No.	AS 4051.234
Benefits	<ul style="list-style-type: none"><li>Project-specific order picking for downstream processes</li><li>Project-specific sorting of the wires</li><li>Optimum removal handling</li><li>Busbar system prepared for optimum workstation order-picking</li><li>No wire sorting required</li><li>Simplifies the wiring process with step-by-step instructions in Eplan Smart Wiring</li><li>Ideal in conjunction with the Wire Cart for perfect workstation order picking</li></ul>
Supply includes	Wire rail WT 35
Note	This gap size indicates the maximum diameter of the wire insulation.
To fit Model No.	4051.205 4051.210 4051.024 4051.036
Applications	For single wires with cross-section 1.5 mm <sup>2</sup> (gap size 3.5 mm)
Packs of	1 pc(s).
Net weight	0.8 kg
Gross weight	0.84 kg
Customs tariff number	76169990

# Features

---

Product description

Wire rail, 1.5 mm<sup>2</sup> for the 15-way rail system in the WT