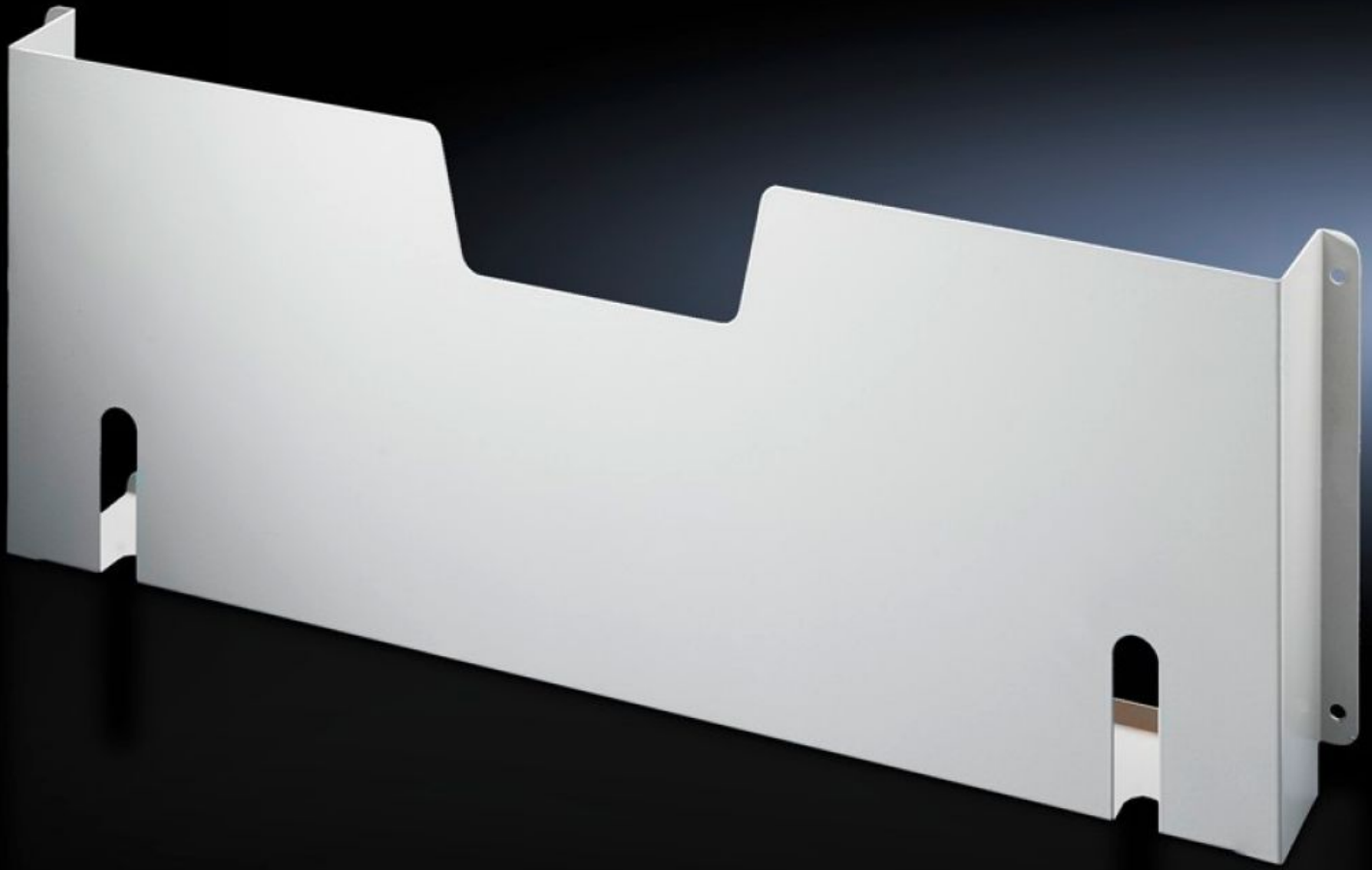


Rittal – The System.

Faster – better – everywhere.



SZ 4118.500

Wiring plan pocket of sheet steel

State: 8/09/2025 (Source: rittal.com/au-en)

ENCLOSURES

POWER DISTRIBUTION

CLIMATE CONTROL

IT INFRASTRUCTURE

SOFTWARE & SERVICES

FRIEDHELM LOH GROUP



SZ 4118.500 - Wiring plan pocket of sheet steel for VX, TS, VX SE, PC, TP pedestal

For fastening to tubular door frames at any height.

Features

Model No.	SZ 4118.500
Product description	For fastening to tubular door frames at any height.
Colour	RAL 7035
Supply includes	Assembly parts
Clearance height	210 mm
Clearance width	655 mm
To fit door width	800 mm
Dimensions	Depth: 35 mm
Packs of	1 pc(s).
Net weight	0.996
Gross weight	1.2
Customs tariff number	73269098
EAN	4028177526327
ETIM 9	EC000317
ETIM 8	EC000317
ECLASS 8.0	27189267