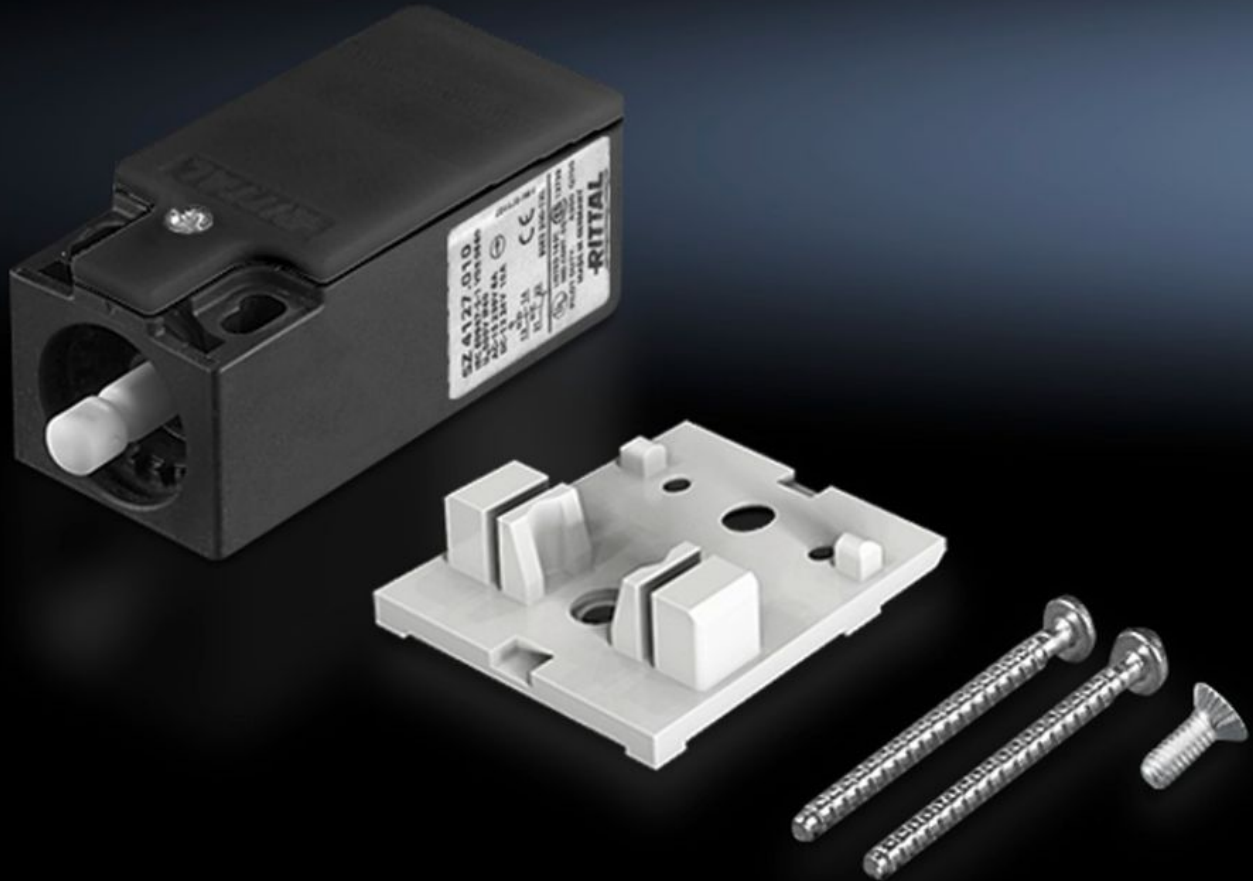


# Rittal – The System.

Faster – better – everywhere.



## SZ 4127.010 Door-operated switch

State: 11/05/2026 (Source: [rittal.com/au-en](http://rittal.com/au-en))

ENCLOSURES

POWER DISTRIBUTION

CLIMATE CONTROL

IT INFRASTRUCTURE

SOFTWARE & SERVICES

FRIEDHELM LOH GROUP



# SZ 4127.010 - Door-operated switch

with mounting accessories, with or without connection cable.

## Features

Model No.	SZ 4127.010
Design	Without connection cable
Note	For installation in VX IT only in conjunction with VX mounting bracket for door-operated switch
Rated impulse withstand voltage, phase to phase	6000 V AC
Rated insulation voltage	400 V AC
Installation options	for LED system light for standard and courtesy light without integral door-operated switch for cooling units and air-water heat exchangers
Electrical connection	240 V AC/6 A 125 V AC/8 A 24 V AC/6 A 24 V DC/6 A
Rated operating voltage	400 V
IP protection category to IEC 60529	IP 40
Packs of	1 pc(s).
Net weight	0.068 kg
Gross weight	0.076 kg
Customs tariff number	85365019
ETIM 9	EC002626
ETIM 8	EC002626
ECLASS 8.0	27189266

# Features

---

Product description	SZ Door-operated switch, with accessory for interior installation, without connection cable
---------------------	---------------------------------------------------------------------------------------------

# Approvals

---

Approvals	CQC CQC-CCC CSA UL + C-UL (listed)
-----------	---------------------------------------------

---

Explanations	Declaration of conformity Declaration of conformity UK
--------------	-----------------------------------------------------------