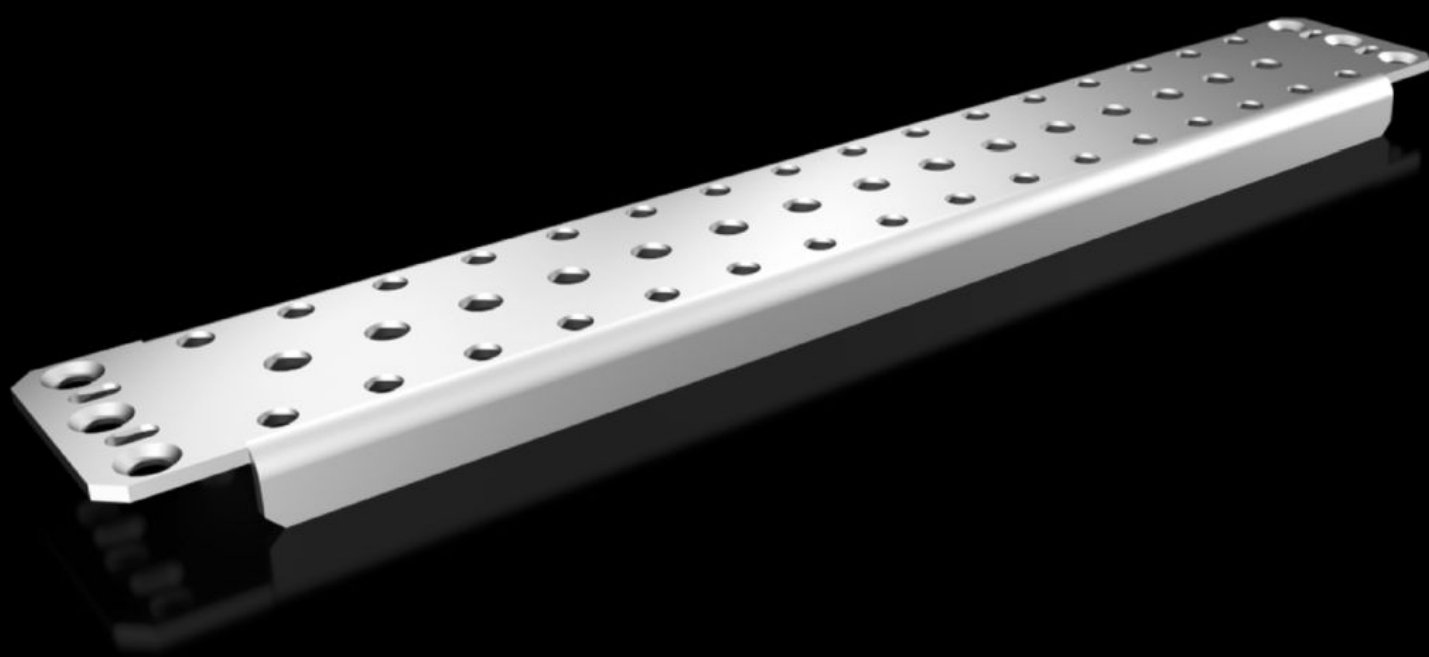


# Rittal – The System.

Faster – better – everywhere.



## TS 4395.000

## Support rail 75 x 20 mm

State: 23/08/2025 (Source: [rittal.com/au-en](https://www.rittal.com/au-en))

ENCLOSURES

POWER DISTRIBUTION

CLIMATE CONTROL

IT INFRASTRUCTURE

SOFTWARE & SERVICES

FRIEDHELM LOH GROUP



# TS 4395.000 - Support rail 75 x 20 mm for VX, TS, VX SE

For heavy installed equipment such as base isolators or transformers.



## Features

Model No.	TS 4395.000
Design	Slotted
Product description	For heavy installed equipment such as base isolators or transformers.
Material	Sheet steel
Surface finish	Zinc-plated
Supply includes	Assembly parts
Installation options	On the inner mounting level of the VX enclosure section On the vertical TS enclosure section via snap-on nuts TS 8800.808 or adaptor rails for VX compatibility, height-offset, via TS punched rail 25 x 38 mm On the horizontal TS enclosure section: in the width, in the depth On the VX SE enclosure section in the width (bottom and top) or in the depth (bottom and top) via snap-on nuts 8800.808.
To fit	Enclosure type: VX TS VX SE Width: = 500 mm Depth: = 500 mm
Packs of	4 pc(s).
Net weight	5.008

# Features

Gross weight	5.4
PCF per pack (cradle-to-gate)	20.1 kg CO2 eq (Cat B)
Note on PCF category	Category B: PCF value (cradle-to-gate) based on the product weight, approximately calculated and self-declared
Customs tariff number	73269098
EAN	4028177100374
ETIM 9	EC001285
ETIM 8	EC001285
ECLASS 8.0	27189261