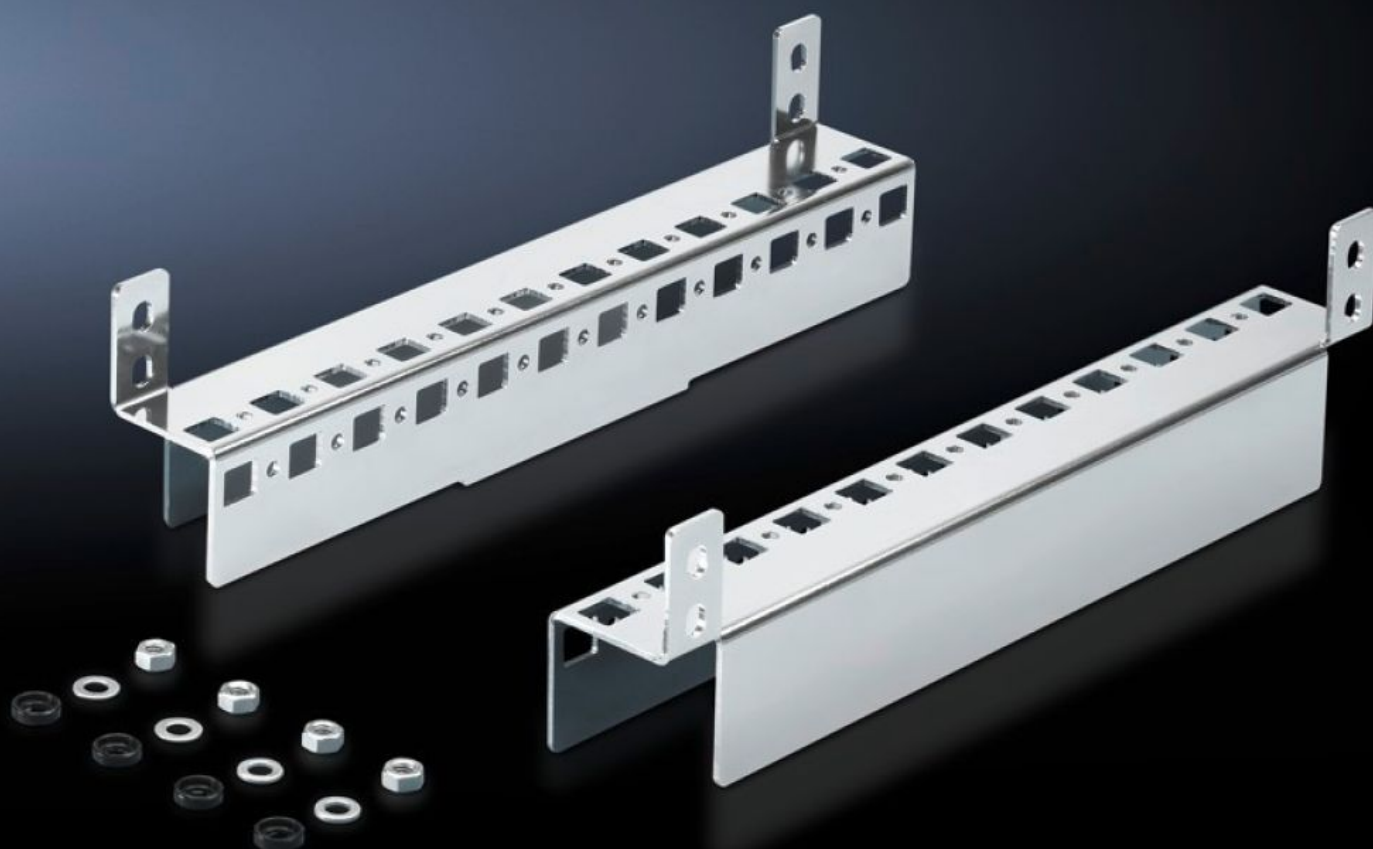


Rittal – The System.

Faster – better – everywhere.



CM 5001.371

Base configuration rail

State: 25/05/2025 (Source: [rittal.com/au-en](https://www.rittal.com/au-en))

ENCLOSURES

POWER DISTRIBUTION

CLIMATE CONTROL

IT INFRASTRUCTURE

SOFTWARE & SERVICES

FRIEDHELM LOH GROUP



CM 5001.371 - Base configuration rail for TP

For mounting in the enclosure depth, on the existing threaded bolts, no machining required. System punchings on 2 sides. Creates additional installation options.



Features

| | |
|-----------------------|---|
| Model No. | CM 5001.371 |
| Product description | For mounting in the enclosure depth, on the existing threaded bolts, no machining required. System punchings on 2 sides. Creates additional installation options. |
| Material | Sheet steel |
| Surface finish | Zinc-plated |
| Supply includes | Assembly parts |
| To fit | Enclosure type: TP Depth: = 300 mm |
| Packs of | 2 pc(s). |
| Net weight | 0.6 |
| Gross weight | 0.687 |
| Customs tariff number | 73269098 |
| EAN | 4028177620605 |
| ETIM 9 | EC002625 |
| ETIM 8 | EC002625 |
| ECLASS 8.0 | 27189234 |