

# Rittal – The System.

Faster – better – everywhere.



## PC 5366.050 PC enclosure system

State: 2/03/2026 (Source: [rittal.com/au-en](http://rittal.com/au-en))

ENCLOSURES

POWER DISTRIBUTION

CLIMATE CONTROL

IT INFRASTRUCTURE

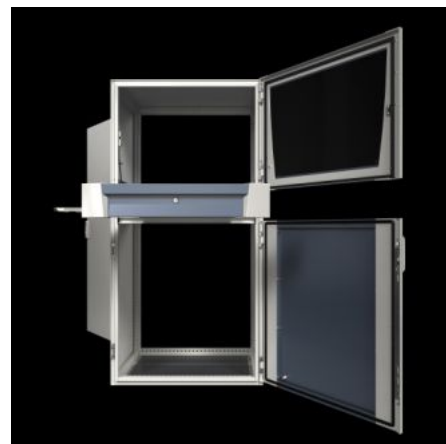
SOFTWARE & SERVICES

FRIEDHELM LOH GROUP



# PC 5366.050 - PC enclosure system

Secure accommodation of all PC components, from monitors, to PCs, to keyboards. For ultimate ease of operation in a modern design. Perfect protection from humidity and dirt, temperature fluctuations and unauthorised access.



## Features

Model No.	PC 5366.050
Design	with glazed door at the top, keyboard drawer and component shelf
Product description	Secure accommodation of all PC components, from monitors, to PCs, to keyboards. For ultimate ease of operation in a modern design. Perfect protection from humidity and dirt, temperature fluctuations and unauthorised access.
Material	Enclosure, door, rear door, mounting compartment, supports: Sheet steel Handles, decorative trim panels: Plastic Door trim panels: Aluminium Viewing window: Single-pane safety glass
Surface finish	Enclosure and door: Dipcoat primed, powder-coated on the outside, textured paint
General colour	RAL 7035
Colour	Enclosure, door, decorative trim panels, supports: RAL 7035 Handle: RAL 7015 Monitor panel, door centre part: RAL 7015

# Features

Supply includes	Enclosure, door, rear door Gland plates Glazed door, top Keyboard drawer Component shelf
Dimensions	Width: 600 mm Height: 1,600 mm Depth: 636 mm
IP protection category to IEC 60529	IP 55
Protection category NEMA	NEMA 12
Type rating to UL 50E	Type 1 Type 12
Max. keyboard dimensions (WxHxD)	480 x 70 x 260 mm
Basic material	Sheet steel
Packs of	1 pc(s).
Net weight	93.5 kg
Gross weight	95.8 kg
PCF per pack (cradle-to-gate)	386.3 kg CO2 eq (Cat B)
Note on PCF category	Category B: PCF value (cradle-to-gate) based on the product weight, approximately calculated and self-declared
Customs tariff number	94032080
ETIM 9	EC002502
ECLASS 8.0	27180501
Product description	PC PC enclosure system, WHD: 600x1600x636 mm, Sheet steel, with glazed door at the top, folding keyboard, component shelf

# Approvals

# Approvals

Approvals	UL + C-UL (listed)
Certificates	Surface finish
Explanations	Declaration of conformity Declaration of conformity UK

## Tender text

PC enclosure with glazed door, keyboard drawer and component shelf

Enclosure for stand-alone siting, consisting of solid body, glazed door at the top, keyboard drawer, component shelf, bottom door, rear door and welded base assembly. Enclosure body with profiled mounting angles at the front and sides and roof.

System slots on a 25 mm pitch pattern, all around, for individual interior installation and two pairs of mounting angles for space-saving system installation.

Glazed door, top:

With support frame latched from the inside, right hinged, vertical decorative trim panels, pane with screen-printed mask

Component shelf for monitor:

Perforated, fixed

Drawer for keyboard:

Housing with keyboard extension piece plus pull-out mousepad

front trim panel with handle strips, folded as handrest, with lock insert no. 3524 E

with unlocking device for glazed door, top

max. keyboard dimensions (WxHxD): 480x70x260 mm

Bottom door:

Vertical bars with locking rods and double-bit insert, hinged on right-hand side

door resp. installation plate foldet

Rear door:

With locking rod and double-bit insert,  
hinged on right-hand side  
With gland plates, divided  
Material:  
Enclosure, door, rear door, mounting compartment,  
Supports: sheet steel  
Handles, decorative trim panels: plastic  
Door trim panels: Aluminium  
Viewing window: single-pane safety glass  
Grand plates: sheet steel, galvanized  
Surface finish:  
Enclosure and door: dipcoat primed, powder coated outside,  
textured paint  
Colour:  
Enclosure, Door, decorative trim panels, supports: RAL 7035  
Handle: RAL 7015  
Monitorfield, door centre part: RAL 7015  
Protection class:  
IP to IEC 60 529: IP55  
NEMA: NEMA 12  
Dimensions (WHD): 600 x 1600 x 636 mm  
Model No.: 5366050  
Manufacturer: Rittal GmbH & CO.KG