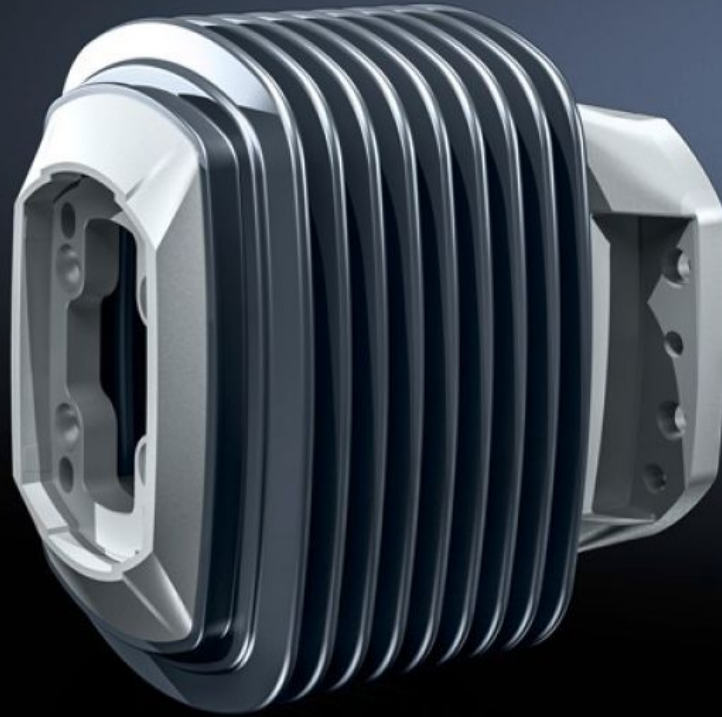


Rittal – The System.

Faster – better – everywhere.



CP 6212.780

Wall-mounted hinge CP 120

State: 22/05/2026 (Source: rittal.com/au-en)

ENCLOSURES

POWER DISTRIBUTION

CLIMATE CONTROL

IT INFRASTRUCTURE

SOFTWARE & SERVICES

FRIEDHELM LOH GROUP



CP 6212.780 - Wall-mounted hinge CP 120 Horizontal outlet, without height offset

For swivel mounting of the support arm on vertical surfaces.

Features

Model No.	CP 6212.780
Product description	For swivel mounting of the support arm on vertical surfaces.
Material	Wall-mounted hinge: Cast steel Concertina section: Plastic
Colour	Wall-mounted hinge: RAL 7035 Concertina section: RAL 7024
Supply includes	Concertina section Screws for restricting rotation range Adjusting screws Self-tapping screws for support section attachment Seals
Rotating/tilting	Yes
Rotation angle/swivel area	approx. 180° Adjustable to a limited extent by means of 2 slotted steel discs
Packs of	1 pc(s).
Net weight	8 kg
Gross weight	8.32 kg
PCF per pack (cradle-to-gate)	31.6 kg CO2 eq (Cat B)
Note on PCF category	Category B: PCF value (cradle-to-gate) based on the product weight, approximately calculated and self-declared
Customs tariff number	73269098
ETIM 9	EC000882
ECLASS 8.0	27400556

Features

Product description

CP Wall-mounted hinge CP 120, outlet horizontal, without height offset

Approvals

Explanations

Manufacturer's declaration