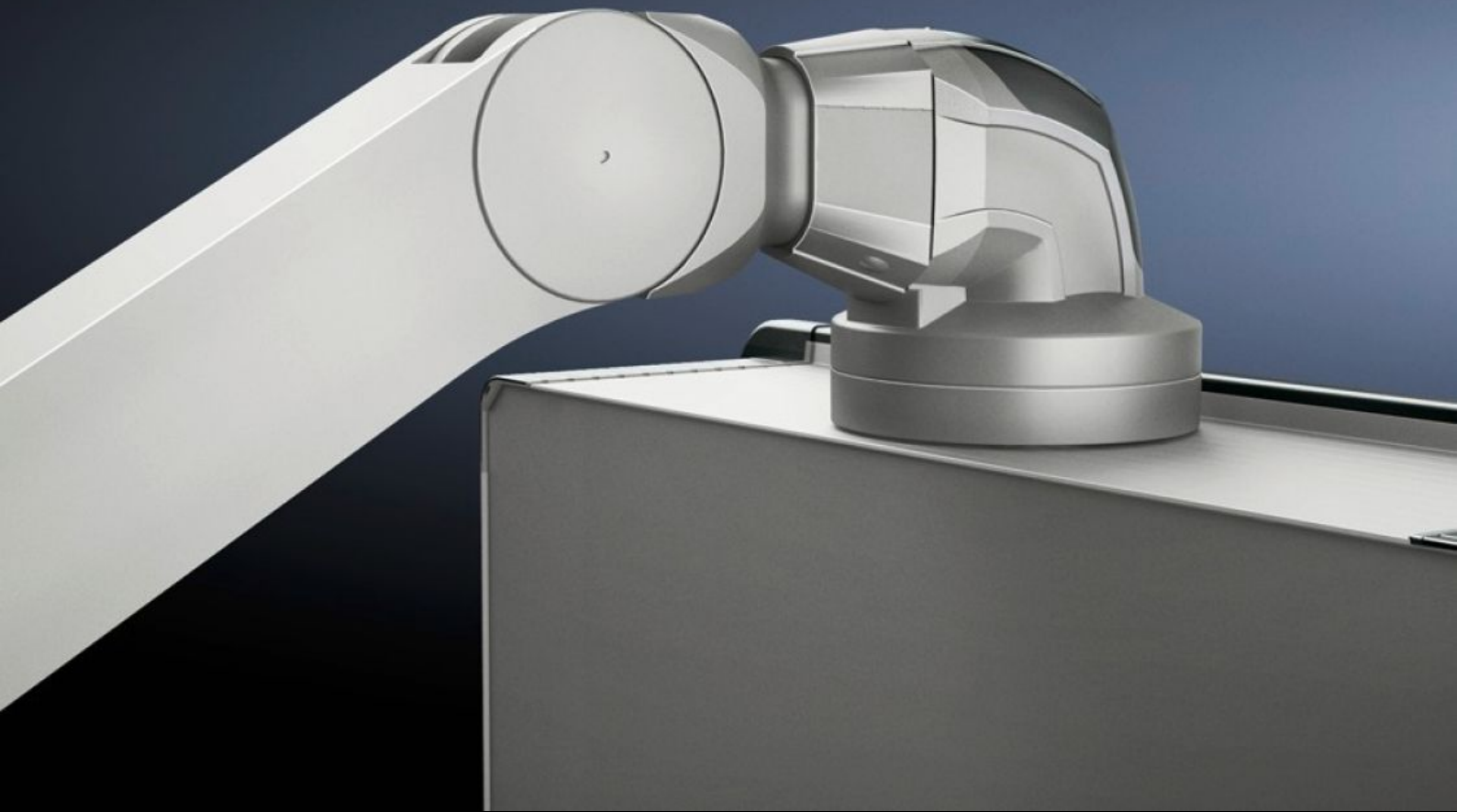


Rittal – The System.

Faster – better – everywhere.



CP 6510.340

Support arm, height-adjustable

State: 4/04/2026 (Source: rittal.com/au-en)

ENCLOSURES

POWER DISTRIBUTION

CLIMATE CONTROL

IT INFRASTRUCTURE

SOFTWARE & SERVICES

FRIEDHELM LOH GROUP



CP 6510.340 - Support arm, height-adjustable for support arm systems CP 120

Offers enhanced ergonomics

Features

Model No.	CP 6510.340
Product description	Offers enhanced ergonomics thanks to adjustment range for tall and short operators, for seated and standing work adjustable to up to 800 mm as required via an adjustment screw at the front of the support arm. Clip-off plastic panels for access to integral cable routing.
Benefits	Precise coordination of the compression spring to the enclosure weight via an adjusting screw at the rear of the support arm Complete functional reliability – if the compression spring breaks, the arm will remain in position Tilting angle of the mounted enclosure is identical in every height position Cables with connectors such as DVI, VGA are easily inserted Integral locking in three stages
Colour	RAL 9006
Supply includes	Assembly parts
Length	1,090 mm
Installation options	Maximum cross-section for cable entry 18 x 39 mm Maximum number of cables that may be inserted: 3x Ø 7 mm and 2x Ø 8.5 mm
Note on Model No.	Weight range applies to configured enclosure and vertical support section.
Dimensions	Length: 1,090 mm
Load capacity	20 kg...40 kg
Packs of	1 pc(s).
Net weight	18.257 kg

Features

Gross weight	19.218 kg
Customs tariff number	73269098
ECLASS 8.0	27189263
Product description	CP Support arm, height-adjustable, for support arm system CP 120, L: 1090 mm, for weight range 20-40 kg

Approvals

Explanations	Manufacturer's declaration
--------------	----------------------------

Tender text

Support arm, height adjustable for support arm systems CP 120
Support arm, height adjustable offers enhanced ergonomics thanks to Adjustment range, for tall and short operators, for seated and standing work. Adjustable to a maximum of 800 mm as required via an adjusting screw at the front of the support arm. Complete functional reliability - if the compression spring breaks, the arm will remain in position. Clip-off plastic panels for access to integral cable routing. Tilting angle of the mounted enclosure is identical in every height position.

Weight/pack: 19,2 kg

Weight range: 20 - 40 kg

Weight range applies to configured enclosure and vertical support section.

Colour: RAL 9006

Lenght: 1090 mm

Model No: 6510340

producer: Rittal GmbH & Co. KG