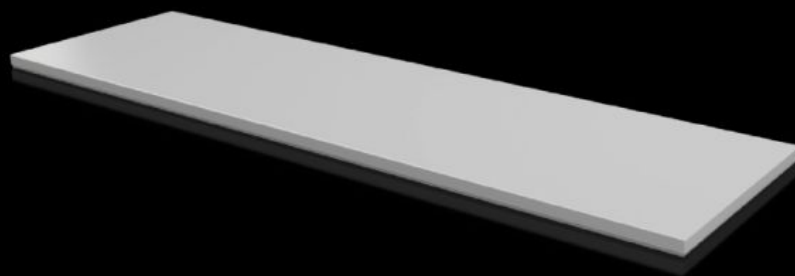


# Rittal – The System.

Faster – better – everywhere.



## CX 6730.970 Cover plate

State: 3/04/2026 (Source: [rittal.com/au-en](http://rittal.com/au-en))

ENCLOSURES

POWER DISTRIBUTION

CLIMATE CONTROL

IT INFRASTRUCTURE

SOFTWARE & SERVICES

FRIEDHELM LOH GROUP



# CX 6730.970 - Cover plate For CX console system

To seal the roof opening of CX pedestals and desk units.

## Features

|                                     |   |
|-------------------------------------|---|
| Model No.                           | CX 6730.970   |
| Material                            | Sheet steel   |
| Surface finish                      | Textured paint  |
| Colour                              | RAL 7035  |
| Supply includes                     | Assembly parts  |
| To fit                              | Enclosure type: CX pedestal<br>Width: = 1,600 mm<br>Depth: = 500 mm |
| Protection category NEMA            | NEMA 1<br>NEMA 12   |
| IP protection category to IEC 60529 | IP 55   |
| Packs of                            | 1 pc(s).  |
| Net weight                          | 12.6 kg   |
| Gross weight                        | 12.8 kg   |
| Customs tariff number               | 94039910  |
| ETIM 9                              | EC000784  |
| ETIM 8                              | EC000784  |
| ECLASS 8.0                          | 27180504  |
| Product description                 | CX cover plate, for CX pedestal, for WxD: 1600x500 mm, sheet steel  |

## Approvals

# Approvals

---

|              |                           |
|--------------|---------------------------|
| Approvals    | UL + C-UL (listed)        |
| Explanations | Declaration of conformity |

---