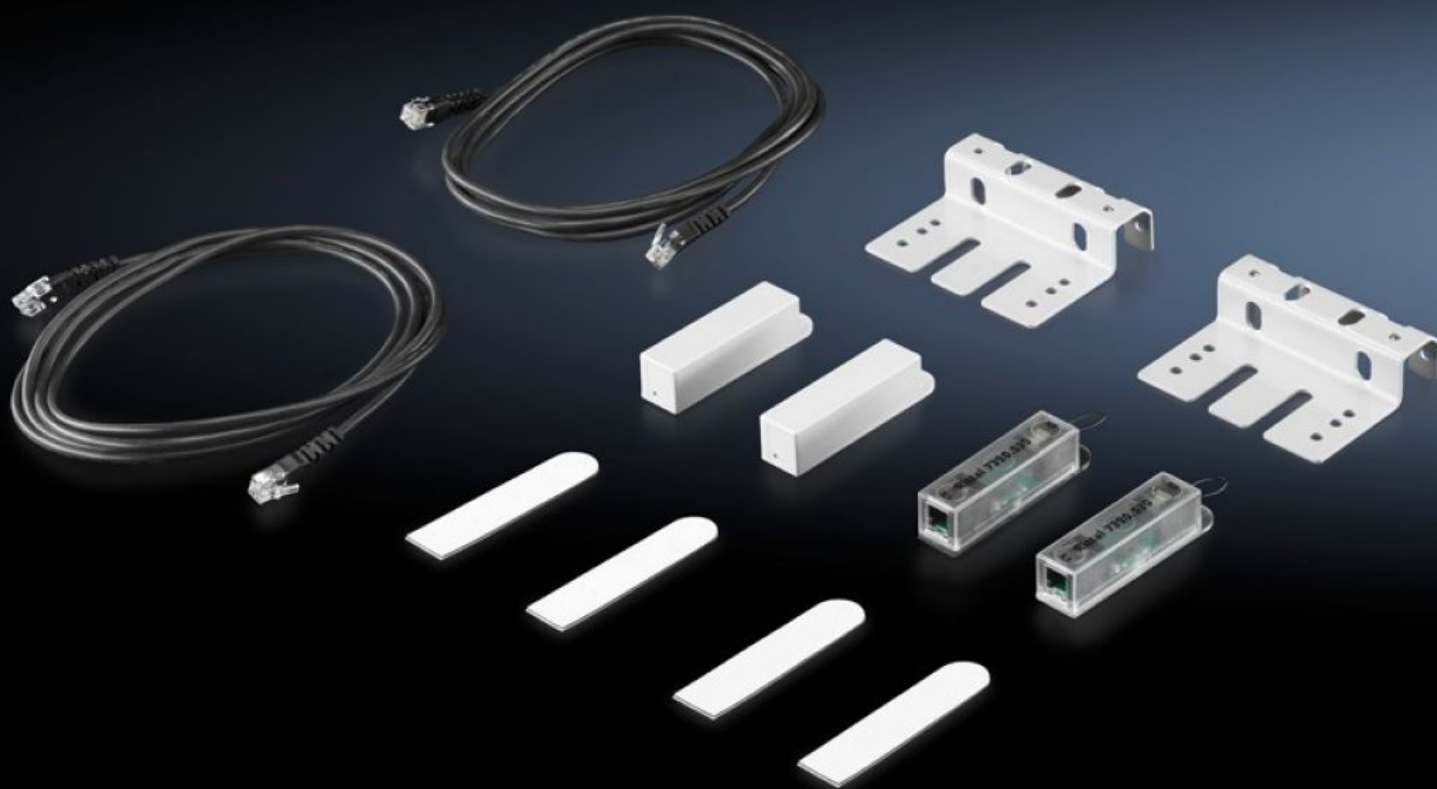


# Rittal – The System.

Faster – better – everywhere.



## DK 7320.530 CMC III sensors

State: 4/05/2025 (Source: [rittal.com/au-en](http://rittal.com/au-en))

ENCLOSURES

POWER DISTRIBUTION

CLIMATE CONTROL

IT INFRASTRUCTURE

SOFTWARE & SERVICES

FRIEDHELM LOH GROUP



# DK 7320.530 - CMC III sensors

Monitor various parameters in enclosures or rooms.

## Features

Model No.	DK 7320.530
Design	Access sensor
Product description	CMC III sensors are used for monitoring the physical environment and can be connected directly to the PU via a CAN bus connection cable RJ45. The sensors may also be linked together to form a bus.
Benefits	Fast connection and automatic detection via plug & play Power is supplied via the CAN-BUS interface.
Applications	Enclosure monitoring in IT, industry and facility management Monitoring of enclosures, rooms and containers in the IT environment
Function principle	Settings can be made via the CMC III processing unit or IoT interface The CMC-TC sensor is mounted on the enclosure frame. A magnetic counterpart is bonded on to the door. The sensor detects whether the magnetic counterpart is up against the sensor and therefore whether the door is closed. A red LED indicates when the magnet has not been detected and the door is therefore open.
Material	Plastic Front: Smooth Enclosure: Textured
Colour	Enclosure: transparent
Supply includes	Sensor Mounting plate Assembly parts Connection cable with connector Jumper plug Mounting bracket Assembly parts

# Features

Connection to the CAN bus	Indirect, via CMC III CAN bus interfaces
Interfaces	RJ12
No. of participating PU compact (max.)	4
No. of participating PU (max.)	32
Number subscribers per PDU note	The number of users increases since up to 5 sensors may be connected in series. However, sensors connected in series emit only one signal.
Note	The sensor is connected to the CMC III via a CMC III CAN bus sensor. Up to 5 CMC-TC access sensors can connected in series to one CMC III CAN bus sensor.
Measuring technique	Reed contact, magnet
Dimensions	Width: 78 mm Height: 20 mm Depth: 18 mm
Operating temperature range	5 °C...45 °C
Ambient humidity (non-condensing)	5...95 %
Packs of	2 pc(s).
Net weight	0.4
Gross weight	0.491
Customs tariff number	85319000
EAN	4028177367272
ETIM 9	EC002627
ECLASS 8.0	27189253

## Approvals

# Approvals

Explanations

Manufacturer's declaration

Declaration of conformity

## Tender text

### CMC-TC access sensor

The access sensor monitors doors, side panels or windows in the enclosure. Up to five access sensors may be connected in series to one monitoring line.

They are suitable for the I/O Unit, Access Unit and Climate Unit. The sensor contains an ID so that it is automatically detected and set up by the CMC-TC system.

Magnet element and monitoring reed contact with integrated ID for automatic set up by CMC-TC.

It is connected to the I/O sensor unit via the connection cable supplied loose  
2 x RJ12 jack, connection cable 2m,  
with RJ 12 connectors on both sides.

### Technical specifications:

Temperature application range: + 5 °C to + 45 °C

Compact plastic enclosure WxHxD: 18 x 77 x 19 mm

Up to five access sensors may be connected in series, the RJ12 jumper plugs forms the end.

Supply includes installation bracket and assembly parts

Packs of 2