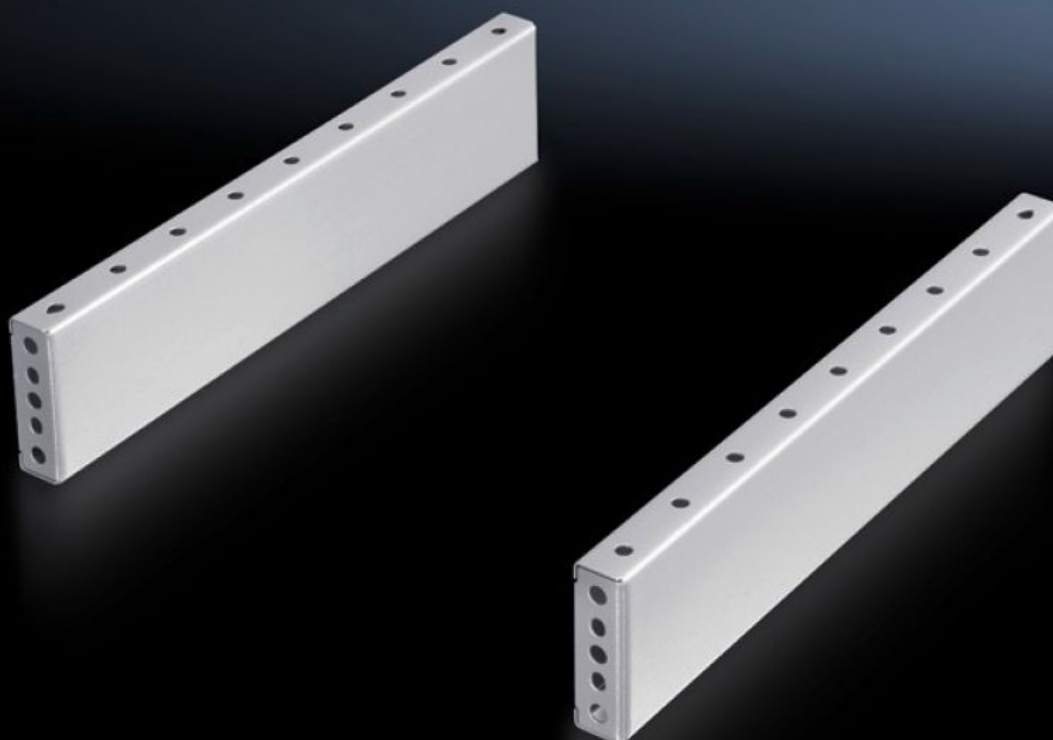


Rittal – The System.

Faster – better – everywhere.



TS 8601.015

Base/plinth trim panels, side, 100 mm

State: 3/06/2024 (Source: rittal.com/au-en)

ENCLOSURES

POWER DISTRIBUTION

CLIMATE CONTROL

IT INFRASTRUCTURE

SOFTWARE & SERVICES

FRIEDHELM LOH GROUP



TS 8601.015 - Base/plinth trim panels, side, 100 mm for base/plinth components front and rear

For mounting between the base/plinth components. At 200 mm height, two 100 mm base/plinth trims may be used. Base/plinth trims may be installed rotated through 90° in order to stabilise bayed base/plinth components.

Features

Model No.	TS 8601.015
Product description	For mounting between the base/plinth components. At 200 mm height, two 100 mm base/plinth trim panels may be used.
Material	Sheet steel
Surface finish	Spray-finished
Colour	RAL 7035
Supply includes	2 base/plinth trim panels Assembly parts
Assembly instruction	Base/plinth trim panels, side, 100 mm, may be installed rotated through 90° to stabilise bayed base/plinth components. The base/plinth baying bracket is required for this purpose
Dimensions	Height: 100 mm
To fit	Enclosure type: TS: = 1,000 mm Enclosure type: SE Enclosure type: CM Enclosure type: TP Enclosure type: PC Enclosure type: IW Enclosure type: TS IT
Packs of	2 pc(s).
Weight/pack	3.642 kg
Customs tariff number	94039910
EAN	4028177232679

Features

E-Number Sweden	E7239725
ETIM 7.0	EC000721
ECLASS 8.0	27182003

Tender text

Base/plinth side trim, for TS, enclosure depth 1000 mm
Base/plinth trim for finishing off the side of the
base/plinth in connection with TS base/plinth
components. To stabilise bayed base/plinths
and for easy cable routing between the enclosures.
May be installed rotated through 90°.
For this a base/plinth baying bracket TS 8601.100
is also required.

Material: Sheet steel, spray-finished

Colour: RAL 7035

Trim height: 100 mm

For enclosure depth: 1000 mm