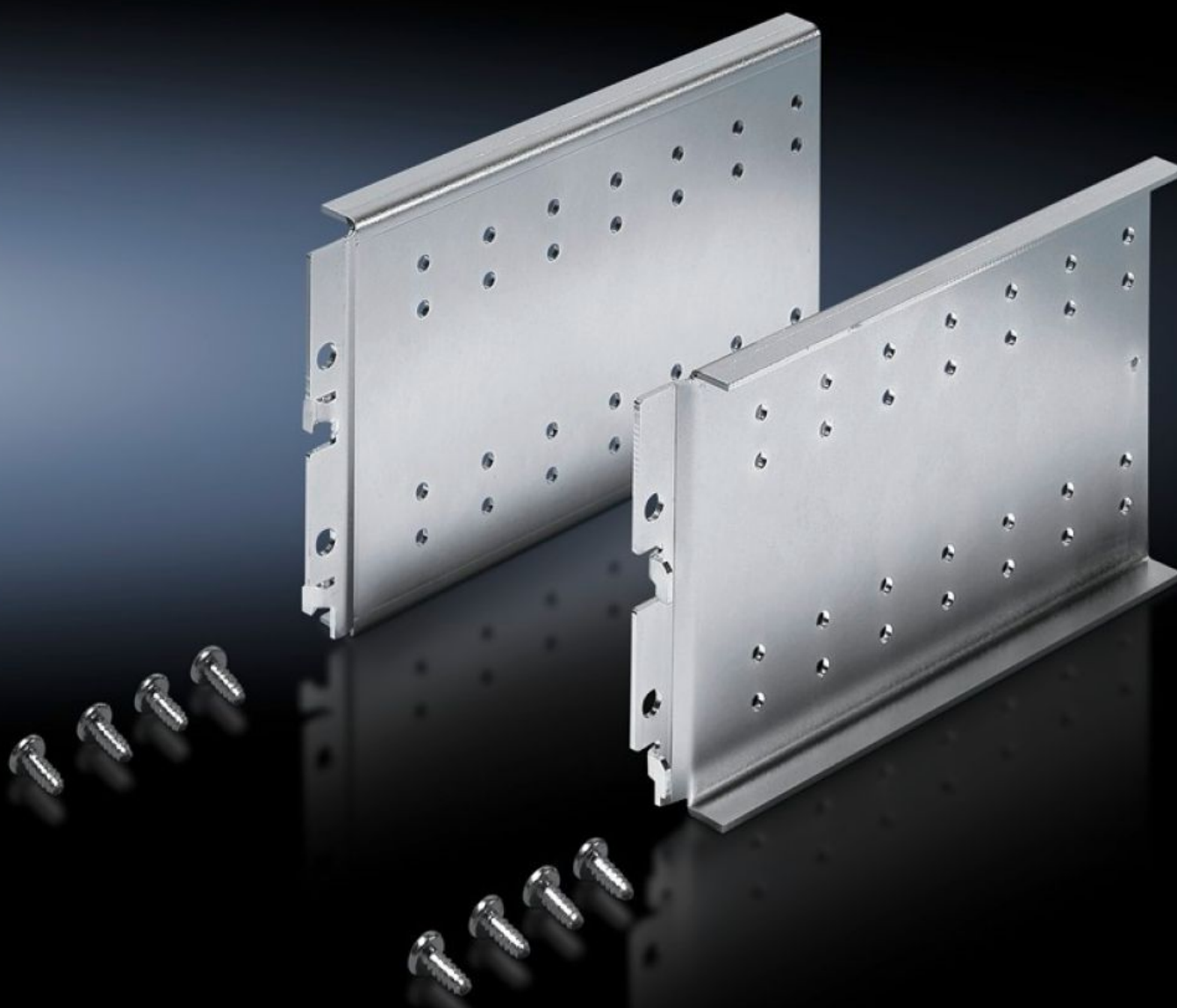
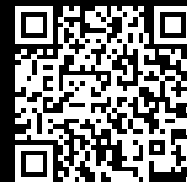


Rittal – The System.

Faster – better – everywhere.



TS 8612.200

Support rail, locatable

State: 29/06/2025 (Source: [rittal.com/au-en](https://www.rittal.com/au-en))

ENCLOSURES

POWER DISTRIBUTION

CLIMATE CONTROL

IT INFRASTRUCTURE

SOFTWARE & SERVICES

FRIEDHELM LOH GROUP



TS 8612.200 - Support rail, locatable for TS, CM, PC, TP

To accommodate mounting plate, small, if due to mounting plate infill or similar equipment, vertical no punched sections or other assemblies can be mounted in the depth.



Features

| | |
|------------------------|--|
| Model No. | TS 8612.200 |
| Product description | Suitable for: Internal mounting behind the mounting compartment, small, of the PC enclosure, mounting on the vertical TS enclosure section, mounting in CM and TP on the interior installation rail. Integral 25 mm pitch pattern of holes to accommodate: Mounting plate, small, PS punched section without mounting flange via support brackets PS as a second mounting level, if due to an installed mounting plate infill and cable duct, vertical no punched sections or other assemblies can be mounted in the depth. |
| Material | Sheet steel, 2.0 mm |
| Surface finish | Zinc-plated |
| Supply includes | Assembly parts |
| Load capacity (static) | 15 kg |
| Packs of | 1 set(s) |
| Net weight | 0.85 |
| Gross weight | 0.926 |
| Customs tariff number | 73269098 |
| EAN | 4028177370593 |
| ECLASS 8.0 | 27189261 |