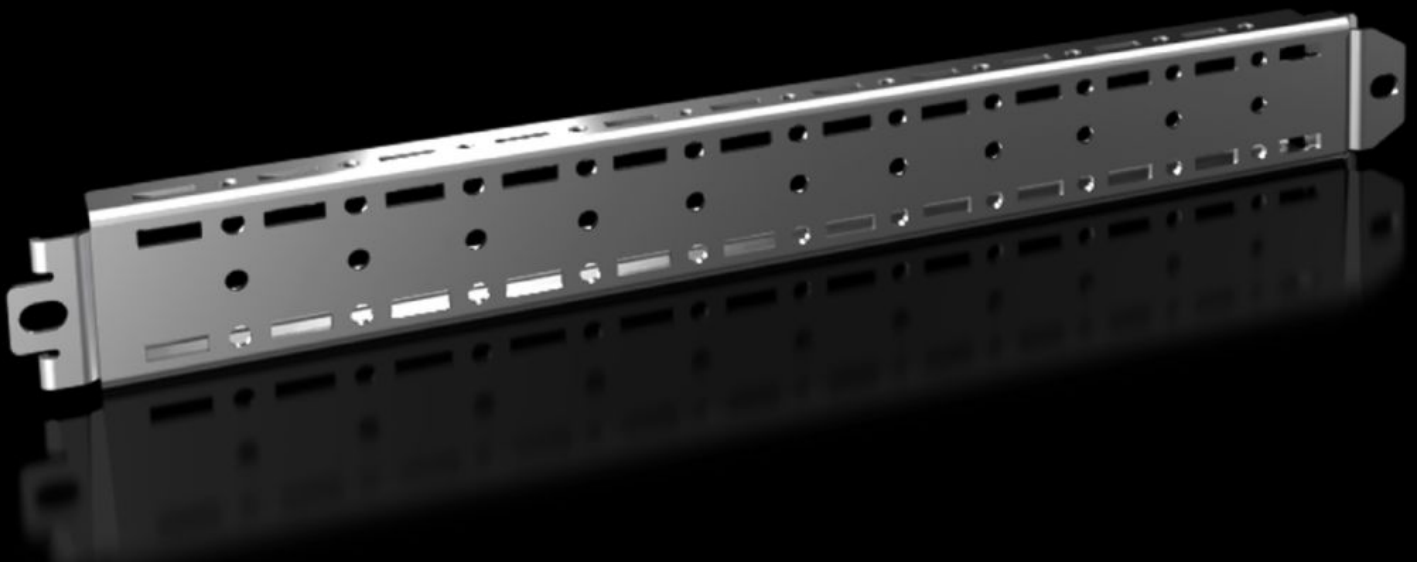


# Rittal – The System.

Faster – better – everywhere.



## VX 8617.700

## Punched rail 18 x 39 mm

State: 8/07/2026 (Source: [rittal.com/au-en](http://rittal.com/au-en))

ENCLOSURES

POWER DISTRIBUTION

CLIMATE CONTROL

IT INFRASTRUCTURE

SOFTWARE & SERVICES

FRIEDHELM LOH GROUP



# VX 8617.700 - Punched rail 18 x 39 mm for VX, VX SE

For variable, individual interior installation of the enclosure frame on the inner mounting level.

## Features

|                               |  |
|-------------------------------|--|
| Model No.                     | VX 8617.700  |
| Product description           | For variable, individual interior installation of the enclosure frame on the inner mounting level.   |
| Benefits                      | May also be used in conjunction with other punched sections<br>Prepared at the rear to accommodate cable ties for optimum cable routing inside the enclosure<br>Simply insert into the system punchings, even with the mounting panel in its rearmost position |
| Material                      | Sheet steel  |
| Surface finish                | Zinc-plated  |
| Supply includes               | Assembly parts   |
| Installation options          | In VX on the inner mounting level, on the VX enclosure section<br>In VX SE, on the enclosure section in conjunction with VX adaptor rail   |
| Note                          | In enclosures with a mounting plate, 2 punched rails are already included with the supply.   |
| To fit                        | Enclosure type: VX<br>VX SE<br>Width/depth: 400 mm   |
| Packs of                      | 4 pc(s).   |
| Net weight                    | 1.428 kg   |
| Gross weight                  | 1.524 kg   |
| PCF per pack (cradle-to-gate) | 6.08   |
| Customs tariff number         | 73269098   |
| ETIM 9                        | EC002620   |
| ECLASS 8.0                    | 27189234   |

# Features

---

Product description

VX Punched rail 18 x 38 mm, for W/D: 400 mm

# Approvals

---

Explanations

PCF-declaration