

# Rittal – The System.

Faster – better – everywhere.



VX 8660.063

Base/plinth corner pieces with  
base/plinth trim panels, front and  
rear for VX base/plinth system,  
stainless steel



ENCLOSURES

POWER DISTRIBUTION

CLIMATE CONTROL

IT INFRASTRUCTURE

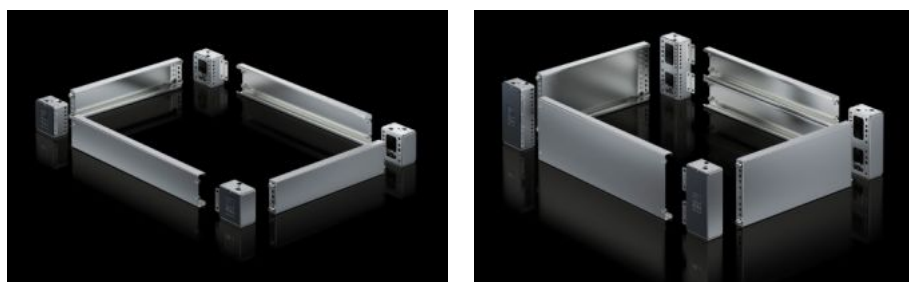
SOFTWARE & SERVICES



FRIEDRICH LOH GROUP

# VX 8660.063 - Base/plinth corner pieces with base/plinth trim panels, front and rear for VX base/plinth system, stainless steel New version

Base/plinth corner pieces with front and rear trim panel. Large openings in the base/plinth corner piece for optimum access to the screw connection. Seamlessly bayable.



## Features

Model No.	VX 8660.063
Material	Base/plinth corner piece: Stainless steel 1.4301 (AISI 304) Base/plinth trim panel front/rear: Stainless steel 1.4301 (AISI 304) Cover caps: ABS
Surface finish	Brushed, grain 400
Supply includes	Assembly parts 4 base/plinth corner pieces 4 cover caps 1 base/plinth trim panel, front/rear, 200 mm high 2 base/plinth trim panels, front/rear, 100 mm high
Note	Side base/plinth trim panels are required to finish off a base/plinth unit and also for additional stability between the base/plinths. If necessary, the cover caps included with the supply may be exchanged for stainless steel cover caps for VX base/plinth system, stainless steel. Components from the 1st generation base/plinth system cannot be combined with components from the 2nd generation base/plinth system
Dimensions	Height: 200 mm

# Features

---

To fit	Enclosure type: VX VX SE TS PC Width: = 1,200 mm
Type rating to UL 50E	Type 1 Type 3R Type 4 Type 4X Type 12
Packs of	2 pc(s).
Net weight	10.98 kg
Gross weight	10.989 kg
Customs tariff number	94039910
ETIM 9	EC000721
ETIM 8	EC000721
ECLASS 8.0	27182003
Product description	VX base/plinth corner piece with trim panel, front and rear, H: 200 mm, for W: 1200 mm, stainless steel, 1.4301

---

# Approvals

---

Approvals	UL + C-UL - FTTA
-----------	------------------