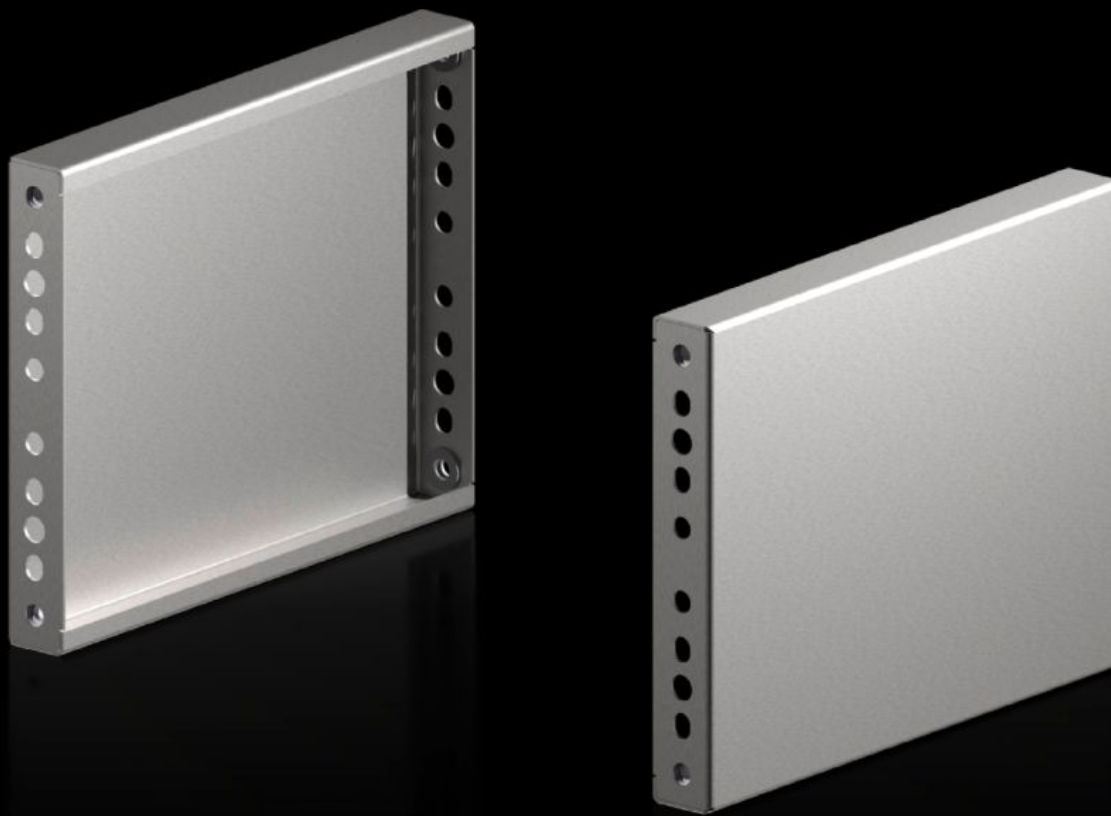


# Rittal – The System.

Faster – better – everywhere.



## VX 8660.080

### Base/plinth trim panels, sides, for VX base/plinth system, stainless steel

State: 20/07/2025 (Source: [rittal.com/au-en](http://rittal.com/au-en))

ENCLOSURES

POWER DISTRIBUTION

CLIMATE CONTROL

IT INFRASTRUCTURE

SOFTWARE & SERVICES

FRIEDHELM LOH GROUP



# VX 8660.080 - Base/plinth trim panels, sides, for VX base/plinth system, stainless steel New version

Stainless steel base/plinth trim panels are used in the depth to finish off a base/plinth unit at the sides.



## Features

Model No.	VX 8660.080
Material	Stainless steel 1.4301 (AISI 304)
Surface finish	Brushed, grain 400
Supply includes	Assembly parts
Note	Components from the 1st generation base/plinth system cannot be combined with components from the 2nd generation base/plinth system
Dimensions	Height: 200 mm
To fit	Enclosure type: VX VX SE TS PC Depth: = 400 mm
Type rating to UL 50E	Type 1 Type 3R Type 4 Type 4X Type 12
Packs of	2 pc(s).
Net weight	1.9

# Features

Gross weight	2.113
Customs tariff number	94039910
EAN	4028177037724
ETIM 9	EC000721
ETIM 8	EC000721
ECLASS 8.0	27182003

# Approvals

Approvals	UL + C-UL - FTTA
-----------	------------------