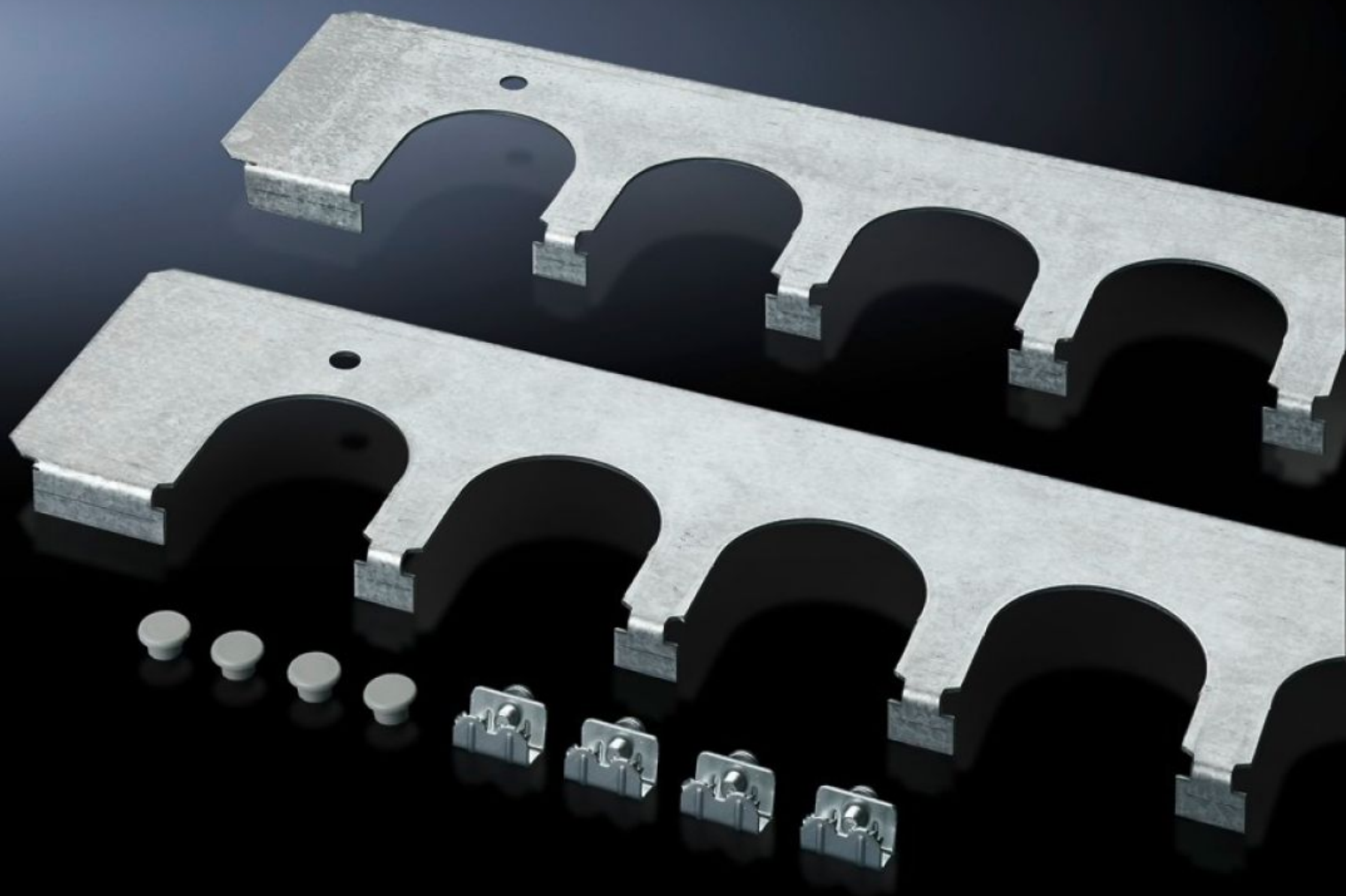


# Rittal – The System.

Faster – better – everywhere.



## SZ 8800.060 Cable entry plates

State: 15/08/2025 (Source: [rittal.com/au-en](https://www.rittal.com/au-en))

ENCLOSURES

POWER DISTRIBUTION

CLIMATE CONTROL

IT INFRASTRUCTURE

SOFTWARE & SERVICES

FRIEDHELM LOH GROUP



# SZ 8800.060 - Cable entry plates for installation in TS, SE and PC enclosures

Secure cable routing in conjunction with cable entry grommets, connector grommets. Fitted instead of standard gland plates.

## Features

Model No.	SZ 8800.060
Product description	Secure cable routing in conjunction with cable entry grommets, connector grommets. Fitted instead of standard gland plates.
Benefits	Particularly well-suited to cables with different cross-sections Thanks to the enclosure symmetry, where dimensions permit, cable entry plates may also be inserted in the enclosure depth, right and left, analogous to the gland plates
Material	Sheet steel
Surface finish	Zinc-plated
Supply includes	Assembly parts
Number of cut-outs	5
To fit	Enclosure type: TS: = 600 mm Enclosure type: SE Enclosure type: PC
Packs of	2 pc(s).
Net weight	0.874
Gross weight	1.074
Customs tariff number	73269098
EAN	4028177212466
ETIM 9	EC002620
ECLASS 8.0	27189261