

Rittal – The System.

Faster – better – everywhere.



TS 8800.300 Adaptor rail

State: 2/08/2025 (Source: rittal.com/au-en)

ENCLOSURES

POWER DISTRIBUTION

CLIMATE CONTROL

IT INFRASTRUCTURE

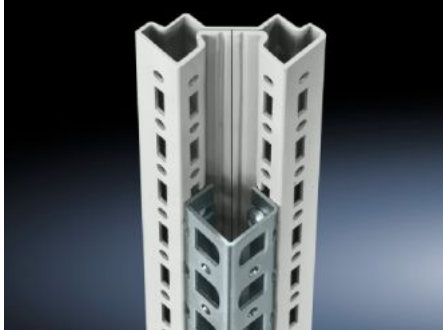
SOFTWARE & SERVICES

FRIEDHELM LOH GROUP



TS 8800.300 - Adaptor rail for PS compatibility

Installation in the vertical TS enclosure sections to create compatibility with: PS mounting rail, PS punched section without mounting flange, PS punched section with mounting flange.



Features

Model No.	TS 8800.300
Product description	To achieve compatibility with: PS punched rail 23 x 23 mm, PS punched section without mounting flange 23 x 73 mm and PS punched section with mounting flange 23 x 73 mm.
Material	Sheet steel
Surface finish	Zinc-plated
Supply includes	Assembly screws
Installation options	On the vertical TS, VX SE enclosure section On the horizontal VX SE enclosure section, top in the width
To fit	Enclosure type: TS Height: = 2,000 mm
Packs of	4 pc(s).
Net weight	4.052
Gross weight	4.252
Customs tariff number	73269098
EAN	4028177212657
ETIM 9	EC002625
ECLASS 8.0	27189234