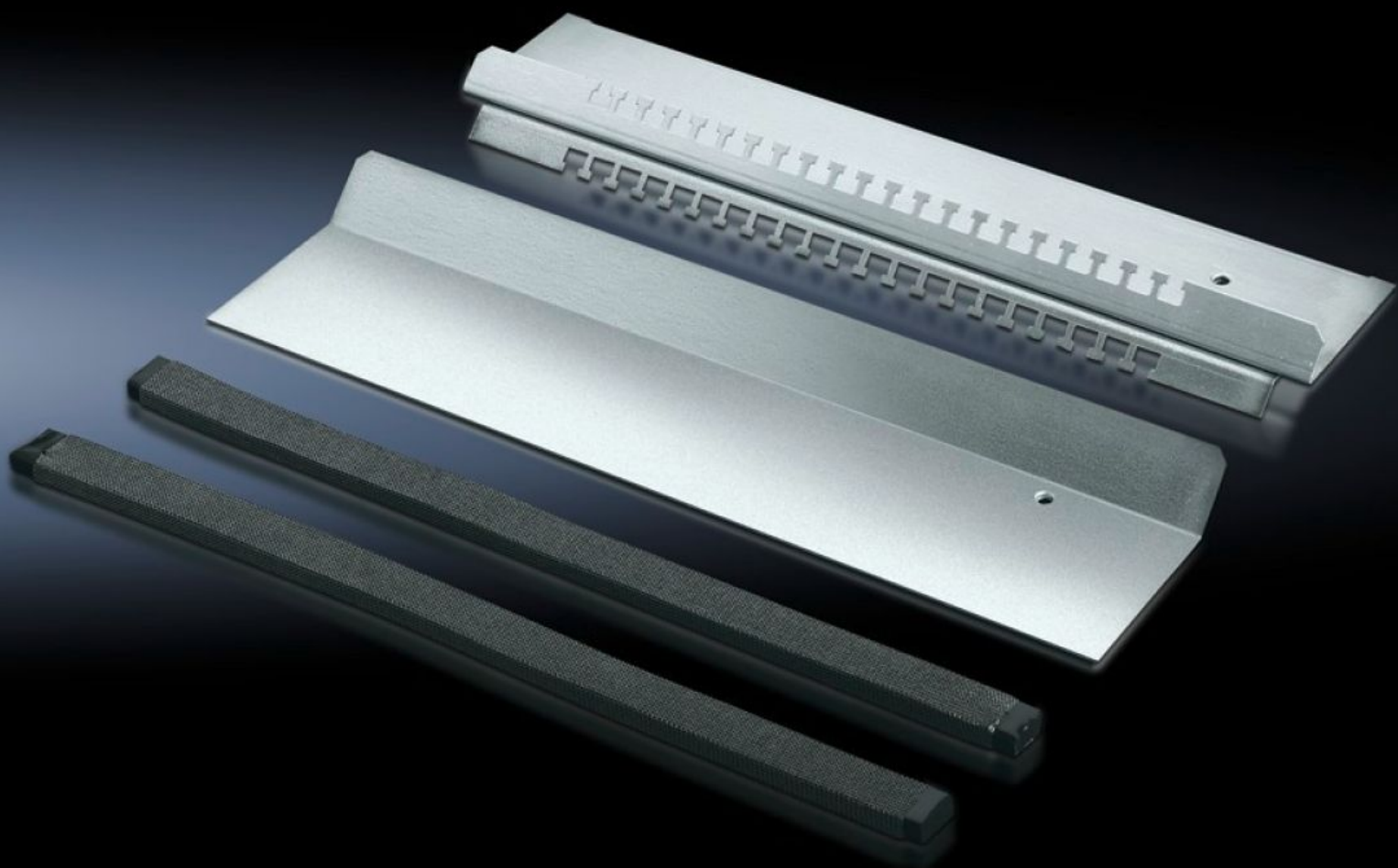


Rittal – The System.

Faster – better – everywhere.



TS 8800.680 EMC gland plate

State: 26/08/2025 (Source: rittal.com/au-en)

ENCLOSURES

POWER DISTRIBUTION

CLIMATE CONTROL

IT INFRASTRUCTURE

SOFTWARE & SERVICES

FRIEDHELM LOH GROUP



TS 8800.680 - EMC gland plate

For shielded cables with a maximum diameter of 20 mm in conjunction with standard gland plates.

Features

| | |
|-----------------------|--|
| Model No. | TS 8800.680 |
| Product description | For shielded cables with a maximum diameter of 20 mm. Combined EMC contacting and cable fastening provide low-resistance contact between the cable shield and gland plate. For all 400, 500, 600 and 800 mm deep enclosures in conjunction with standard gland plates. |
| Material | Sheet steel |
| Surface finish | Zinc-plated |
| Supply includes | Cable clamp strip with hammer-head punching 1 sliding gland plate 2 EMC seals |
| To fit | Enclosure type: TS Width: = 800 mm |
| Note | Standard-compliant IP protection category not supported |
| Packs of | 1 pc(s). |
| Net weight | 2.4 |
| Gross weight | 2.554 |
| Customs tariff number | 94039910 |
| EAN | 4028177214897 |
| ETIM 9 | EC002620 |
| ECLASS 8.0 | 27189261 |