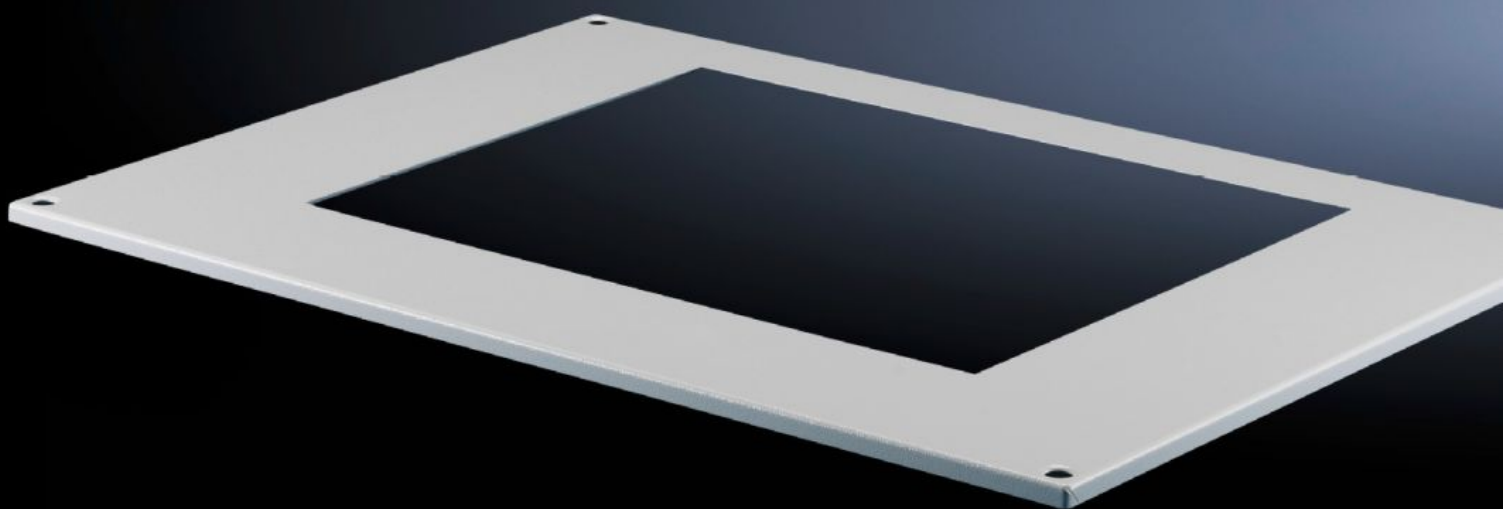
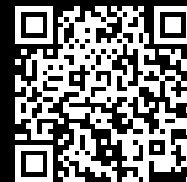


Rittal – The System.

Faster – better – everywhere.



TS 8801.350

Roof plates TS

State: 25/05/2025 (Source: rittal.com/au-en)

ENCLOSURES

POWER DISTRIBUTION

CLIMATE CONTROL

IT INFRASTRUCTURE

SOFTWARE & SERVICES

FRIEDHELM LOH GROUP



TS 8801.350 - Roof plates TS

Features

Model No.	TS 8801.350
Product description	For mounting roof-mounted units, roof-mounted air/water heat exchangers. The cut-outs in the roof plate are arranged so that the roof-mounted cooling units are positioned centrally on the enclosure.
Benefits	Simple, fast assembly
Material	Sheet steel
Colour	RAL 7035
Supply includes	Assembly parts
Mounting cut-out	Width:490 mm Depth:390 mm
Distance cut-out to back	61.3 mm
Note	When mounting cooling units on the roof plate 8801.310, there may be a collision with the enclosure eyebolts. For this reason, roof fastening screws are supplied loose with the roof plates. Attached to the roof plate 8801.340 from the inside using metal brackets and retaining clamps.
To fit Model No.	3209.... 3210.... 3383.... 3384.... 3385.... 3273....
Dimensions	Width: 1,167.5 mm Height: 13 mm Depth: 567.5 mm
To fit	Enclosure type: TS Width: = 1,200 mm Depth: = 600 mm

Features

Packs of	1 pc(s).
Net weight	8.522
Gross weight	8.97
Customs tariff number	73269098
EAN	4028177360648
ETIM 9	EC000744
ECLASS 8.0	27182405

Approvals

Certificates	EAC
--------------	-----