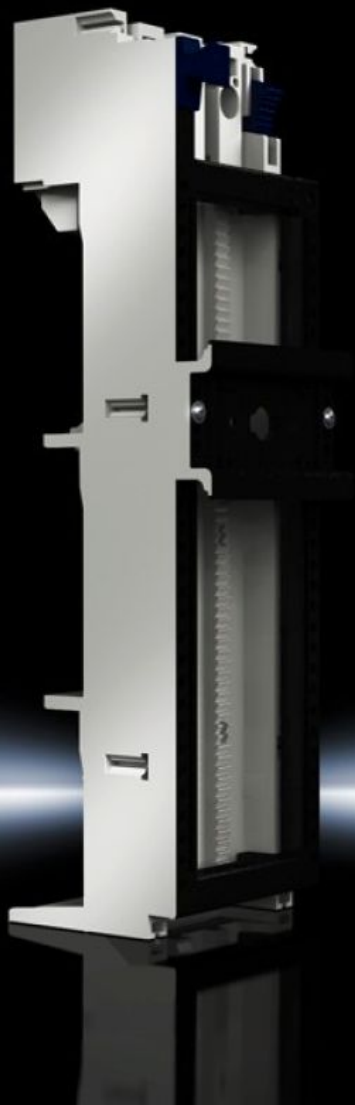
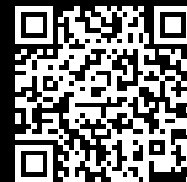


# Rittal – The System.

Faster – better – everywhere.



## SV 9340.660 OM adaptors

State: 8/02/2026 (Source: [rittal.com/au-en](http://rittal.com/au-en))

ENCLOSURES

POWER DISTRIBUTION

CLIMATE CONTROL

IT INFRASTRUCTURE

SOFTWARE & SERVICES

FRIEDHELM LOH GROUP



# SV 9340.660 - OM adaptors with spring terminals



## Features

Model No.	SV 9340.660
Material	Polyamide Fire protection corresponding to UL 94-V0
Colour	Chassis: RAL 7035
Rated current max.	32 A
Rated operating voltage	690 V, 3~
For bar systems with centre-to-centre spacing	60 mm
Support rail type	Support frame, 1 x TS 55D
Number of poles	3-pole
Dimensions	Width: 55 mm Height: 208 mm
Connection of round conductors	1.5 - 6 mm <sup>2</sup>
Support rails Qty/height	1 / 10 mm
To fit busbars	Height: 5, 10 mm
Support frame (W x H)	55 mm x 170 mm
Packs of	1 pc(s).
Net weight	0.29
Gross weight	0.315

# Features

Copper weight (kg per piece)	0.027
Customs tariff number	85369095
EAN	4028177502680
ETIM 9	EC001531
ECLASS 8.0	27370304

# Approvals

Approvals	ABS DNV-GL Lloyds Register of Shipping
Explanations	Declaration of conformity Declaration of conformity UK

# Tender text

OM adaptor 32 A  
OM adaptor 32 A with tension spring clamp, 3-pole,  
for busbar thickness 5/10 mm and PLS 800/1600  
Technical specifications  
Construction width: 55 mm  
Length: 208 mm  
Support frame: 55 x 170 mm  
Support frame support: -  
PinBlock: -  
Connector outlet: -  
Support rail: 1  
System:  
Rittal RiLine60