

# Rittal – The System.

Faster – better – everywhere.



## RX 9360.241

# RiLineX connection adaptor

State: 21/05/2026 (Source: [rittal.com/au-en](http://rittal.com/au-en))

ENCLOSURES

POWER DISTRIBUTION

CLIMATE CONTROL

IT INFRASTRUCTURE

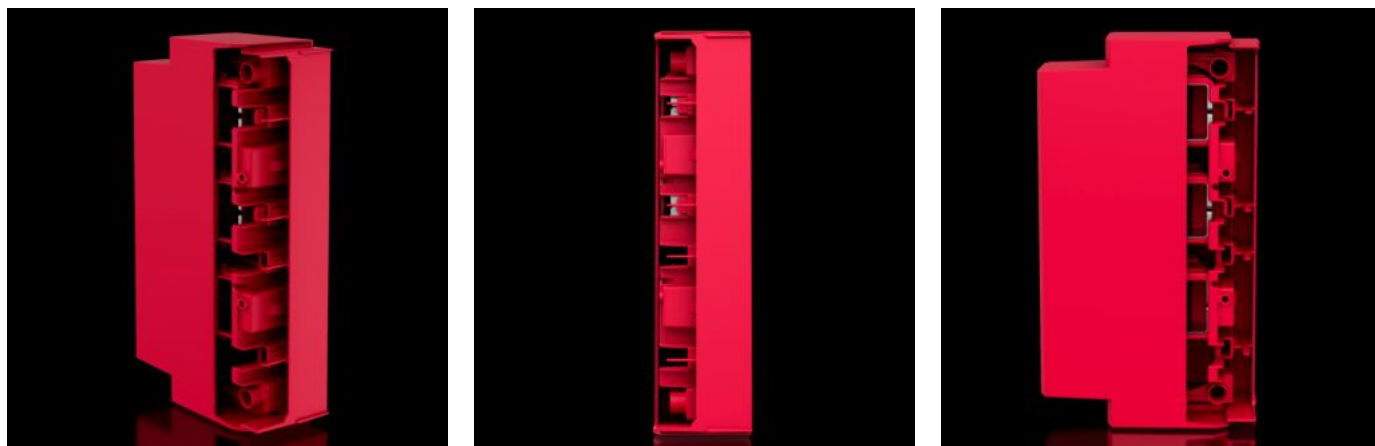
SOFTWARE & SERVICES

FRIEDHELM LOH GROUP



# RX 9360.241 - RiLineX connection adaptor

RiLineX connection adaptor for side infeed from the left or right. For use with vertical mounting of the board or as a corner connector using laminated connection straps. It is also ideal as a T-connection between horizontal and vertical systems. It must not be used with other busbar systems such as RiLine60.



## Features

Model No.	RX 9360.241
Benefits	Mounting on the busbar system and cable connection with just one screw Vertical variant for side infeed to the board
Material	Polyamide (PA 6) Fire protection corresponding to UL 94
Colour	RAL 35745
Rated current (max.)	432 A
Rated current max.	710 A
Rated current of round conductor	710 A
Rated current of round conductor (UL)	630 A
Rated current of laminated copper bar	950 A
Rated current of laminated copper bar (UL)	910 A

# Features

Electrical ratings UL (SCCR)	27,5 kA - 600 V, RMS, unprotected 100 kA - 480 V, circuit breaker max. 800 A, DIVQ/7 100 kA - 600 V, Fuse Class L max. 1200 A, JDDZ/7
Cable outlet	In an axial direction to the board
For bar systems with centre-to-centre spacing	60 mm
Number of poles	3-pole
To fit busbar system	RiLineX RiLine60
Dimensions	Width: 57.8 mm Height: 239.4 mm Depth: 135.6 mm
Connection of round conductors	150 - 300 mm <sup>2</sup>
Clamping area for laminated copper bars (W x H)	32 x 20 mm
To fit busbars	15 x 5/10 20 x 5/10 30 x 5/10
Rated voltage	1,000 V AC 1,500 V DC 600 V AC (UL) 600 V DC (UL)
Overvoltage category	4
Contamination level	3
Standards	IEC/EN 61439-1 UL 508
Rated impulse withstand voltage U <sub>imp</sub>	12 kV
Rated insulation voltage U <sub>i</sub>	1,000 V
Heat loss max.	50 W
IP protection category to IEC 60529	IP 2XB

# Features

Maximum operating air humidity	90 %
Operating temperature range	-5 °C...55 °C
Storage temperature range	-25 °C...75 °C
Ambient humidity (non-condensing)	10...90 %
Packs of	1 pc(s).
Net weight	1 kg
Gross weight	1.185 kg
PCF per pack (cradle-to-gate)	5.51
Customs tariff number	85369010
ETIM 9	EC001531
Product description	RiLineX connection adaptor for side infeed from the left or right. For use with vertical mounting of the board or as a corner connector using laminated connection straps. It is also ideal as a T-connection between horizontal and vertical systems. It must not be used with other busbar systems such as RiLine60.

# Approvals

Approvals	UL + C-UL (listed)
Explanations	Declaration of conformity PCF-declaration

# Tender text

RiLineX connection adaptor (710 A)

RiLineX connection adaptor for 60 mm busbar systems. The device has screw fastening for simultaneous contact between the rail and conductor.

For voltages up to 1000 V AC and 1500 V DC.

IEC and UL approved.

Product information

Number of poles: 3

Busbar dimensions: 15/20/30 mm x 5/10 mm

Rated current max.: 710 A

Connection: max. 300 mm<sup>2</sup>

Cable outlet: horizontal/vertikal

Dimensions: 60 mm x 240 mm x 130 mm (WxHxD)

Manufacturer: Rittal GmbH & Co. KG

Type: 9360241