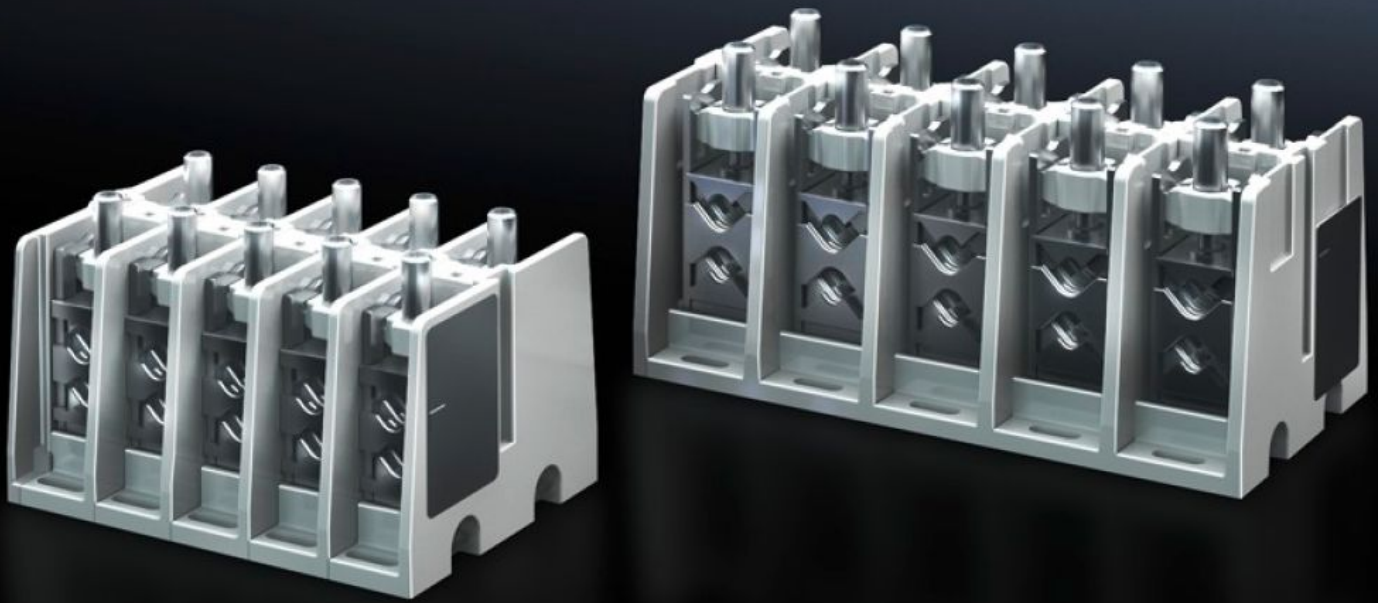


**Rittal – The System.**

Faster – better – everywhere.



# SV 9666.350

## Connection terminal block

State: 25/06/2025 (Source: [rittal.com/au-en](http://rittal.com/au-en))

ENCLOSURES

POWER DISTRIBUTION

CLIMATE CONTROL

IT INFRASTRUCTURE

SOFTWARE & SERVICES

FRIEDHELM LOH GROUP



# SV 9666.350 - Connection terminal block

For connecting copper and aluminium conductors as well as laminated copper bars.

## Features

|   |   |
|---|---|
| Model No.                                       | SV 9666.350   |
| Product description                             | For connecting copper and aluminium conductors. For laminated copper bars or solid and stranded conductors with a pressed wire end ferrule. |
| Material  | Duroplastic   |
| Colour  | RAL 7035  |
| Supply includes                                 | Assembly parts  |
| Assembly instruction                            | Contact hazard protection module 9666.020 is additionally required to cover the connection terminal block.                                  |
| Rated current max.                              | 400 A   |
| Number of poles                                 | 5-pole  |
| Connection of round conductors                  | 50 - 240<br>2 x 25 - 120  |
| Clamping area for laminated copper bars (W x H) | 25 x 21 mm  |
| Packs of  | 1 pc(s).  |
| Net weight                                      | 4.807   |
| Gross weight                                    | 5.08  |
| Customs tariff number                           | 39211900  |
| EAN   | 4028177676336   |
| ETIM 9  | EC001894  |
| ECLASS 8.0                                      | 27400613  |

# Approvals

---

Explanations

Declaration of conformity

Declaration of conformity UK