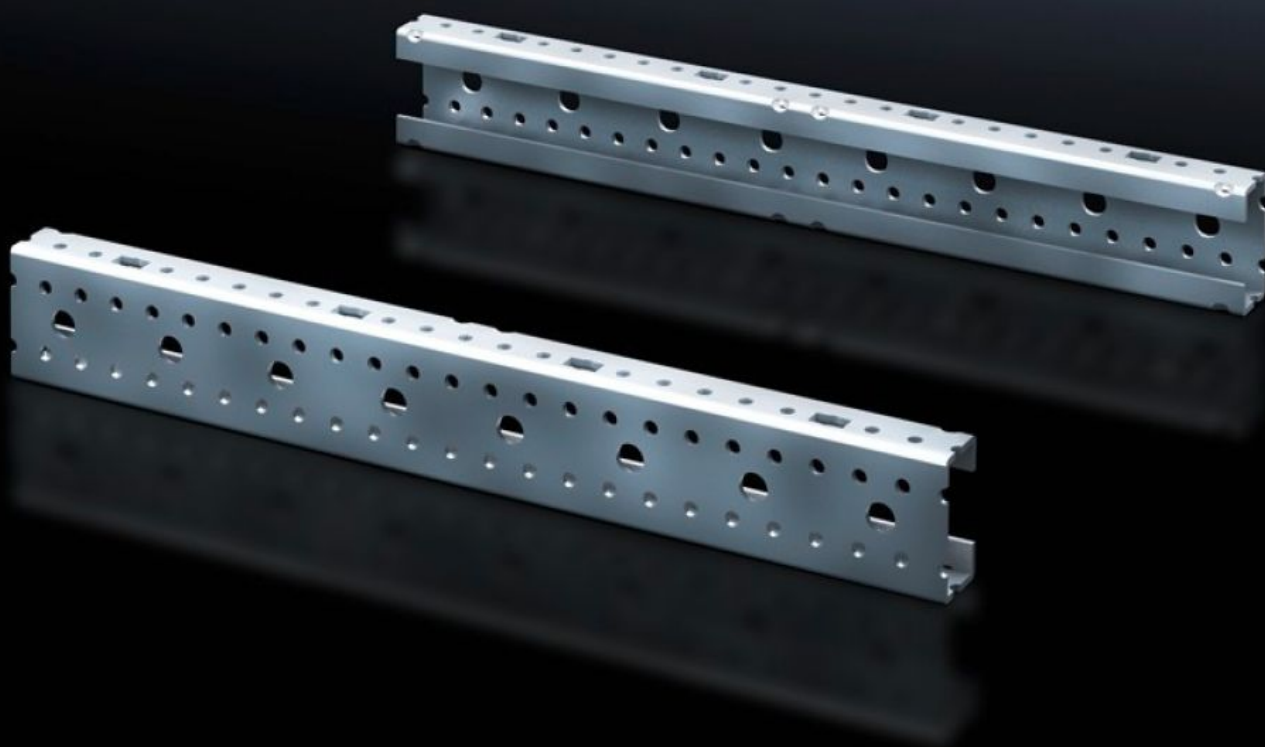
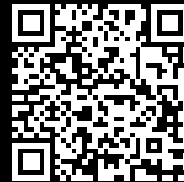


# Rittal – The System.

Faster – better – everywhere.



## SV 9666.705 Mounting angles ISV

State: 11/08/2025 (Source: [rittal.com/au-en](http://rittal.com/au-en))

ENCLOSURES

POWER DISTRIBUTION

CLIMATE CONTROL

IT INFRASTRUCTURE

SOFTWARE & SERVICES

FRIEDHELM LOH GROUP



# SV 9666.705 - Mounting angles ISV for VX

For vertical sub-division of the support frame in the VX/TS/SE enclosure.

## Features

|                               |  |
|-------------------------------|--|
| Model No.                     | SV 9666.705  |
| Product description           | For vertical sub-division of the support frame in the enclosure.   |
| Material                      | Sheet steel  |
| Surface finish                | Zinc-plated  |
| Dimensions                    | Height: 750 mm   |
| Size                          | Height units (U) @ 150 mm: 5   |
| Packs of                      | 2 pc(s).   |
| Net weight                    | 1.76   |
| Gross weight                  | 1.78   |
| PCF per pack (cradle-to-gate) | 7 kg CO2 eq (Cat B)  |
| Note on PCF category          | Category B: PCF value (cradle-to-gate) based on the product weight, approximately calculated and self-declared |
| Customs tariff number         | 73269098   |
| EAN                           | 4028177691513  |
| ETIM 9                        | EC002270   |
| ECLASS 8.0                    | 27400613   |