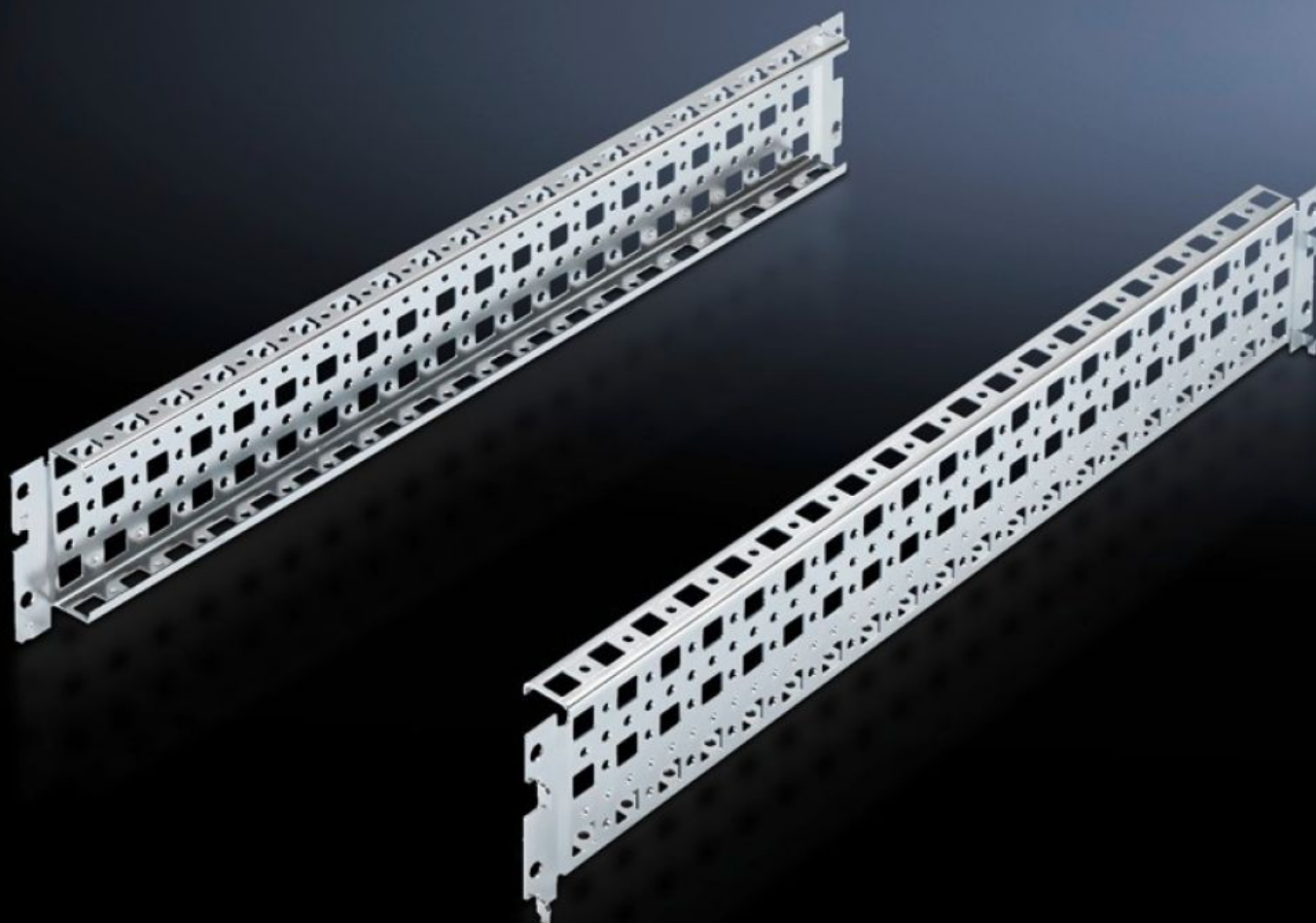


Rittal – The System.

Faster – better – everywhere.



SV 9674.056

Punched sections with mounting flanges

State: 31/07/2025 (Source: rittal.com/au-en)

ENCLOSURES

POWER DISTRIBUTION

CLIMATE CONTROL

IT INFRASTRUCTURE

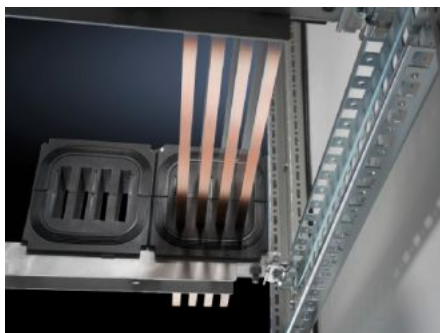
SOFTWARE & SERVICES

FRIEDHELM LOH GROUP



SV 9674.056 - Punched sections with mounting flanges for coupling section

For assembling a Maxi-PLS or Flat-PLS busbar system directly beneath or above the circuit-breaker.



Features

Model No.	SV 9674.056
Product description	For assembling a Maxi-PLS or Flat-PLS busbar system directly beneath or above the circuit-breaker. This punched section with mounting flange may be used without conflict in conjunction with the compartment space side panel modules. It is attached to the outer level of the TS 8 enclosure system, but thanks to the PS punchings allows a mounting level as in the roof or base frame, thereby facilitating the use of busbar system attachment for the roof/base section.
Material	Sheet steel
Surface finish	Zinc-plated
Supply includes	Assembly parts
To fit	Enclosure type: TS Width: = 600 mm Depth: = 600 mm
Packs of	2 pc(s).
Net weight	1.148
Gross weight	1.347
Customs tariff number	73269098

Features

EAN	4028177626515
ETIM 9	EC002525
ECLASS 8.0	27400613