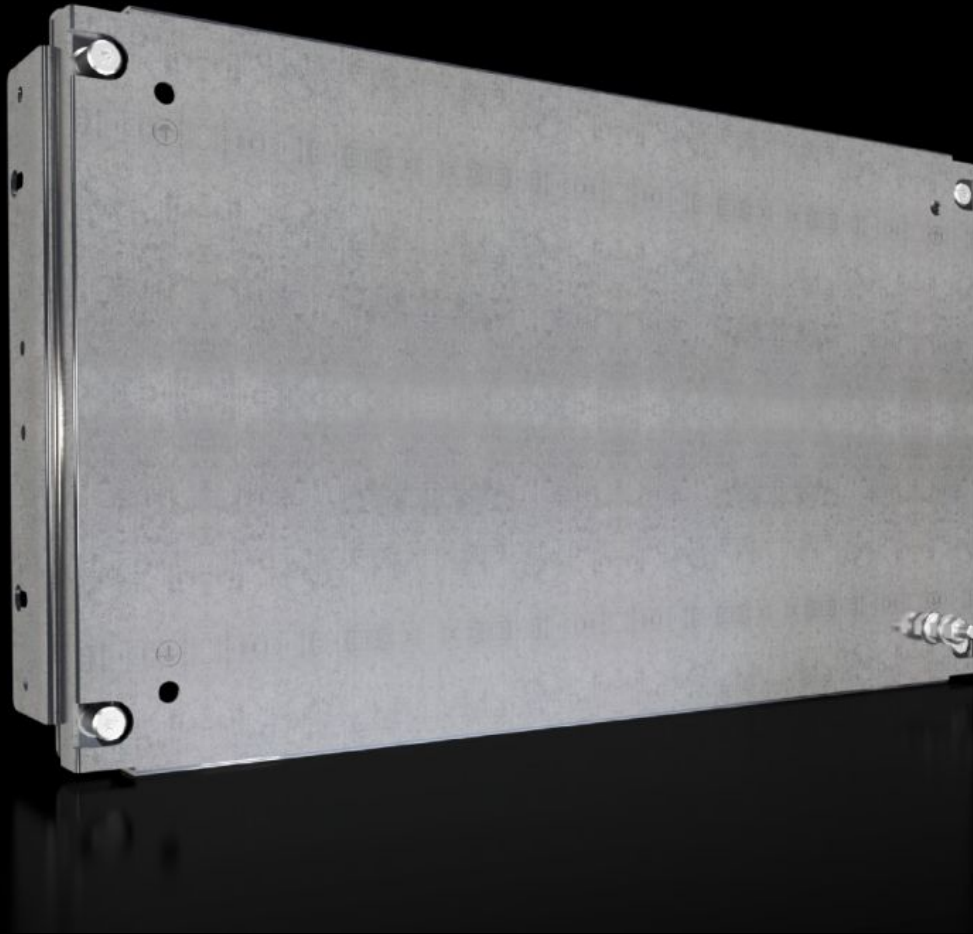


# Rittal – The System.

Faster – better – everywhere.



## SV 9683.663

# Partial mounting plate

State: 12/05/2026 (Source: [rittal.com/au-en](http://rittal.com/au-en))

ENCLOSURES

POWER DISTRIBUTION

CLIMATE CONTROL

IT INFRASTRUCTURE

SOFTWARE & SERVICES

FRIEDHELM LOH GROUP



# SV 9683.663 - Partial mounting plate for compartment side panel

With or without duct, for direct attachment to the functional space side panel.

## Features

|                               |  |
|-------------------------------|--|
| Model No.                     | SV 9683.663  |
| Design                        | solid  |
| Product description           | For direct attachment to the compartment side panel for internal compartmentalisation. Universal interior installation with switchgear and controlgear. Creation of additional mounting levels. In combination with compartment dividers and side panel, internal compartmentalisation in accordance with Form 1 to 4 is possible. |
| Material                      | Sheet steel, 2 mm  |
| Surface finish                | Zinc-plated  |
| Supply includes               | Angle brackets and assembly parts  |
| For compartment height        | 300 mm   |
| Dimensions                    | Width: 502 mm<br>Height: 293 mm  |
| To fit                        | Width: = 600 mm  |
| Packs of                      | 1 pc(s).   |
| Net weight                    | 2.82 kg  |
| Gross weight                  | 3.64 kg  |
| PCF per pack (cradle-to-gate) | 13.9 kg CO2 eq (Cat B)   |
| Note on PCF category          | Category B: PCF value (cradle-to-gate) based on the product weight, approximately calculated and self-declared   |
| Customs tariff number         | 94039910   |
| ETIM 9                        | EC000213   |
| ECLASS 8.0                    | 27400613   |

# Features

---

Product description

SV Partial mounting plate, WH: 502x293 mm, solid, for VX (W: 600 mm)

# Approvals

---

Explanations

Declaration of conformity UK