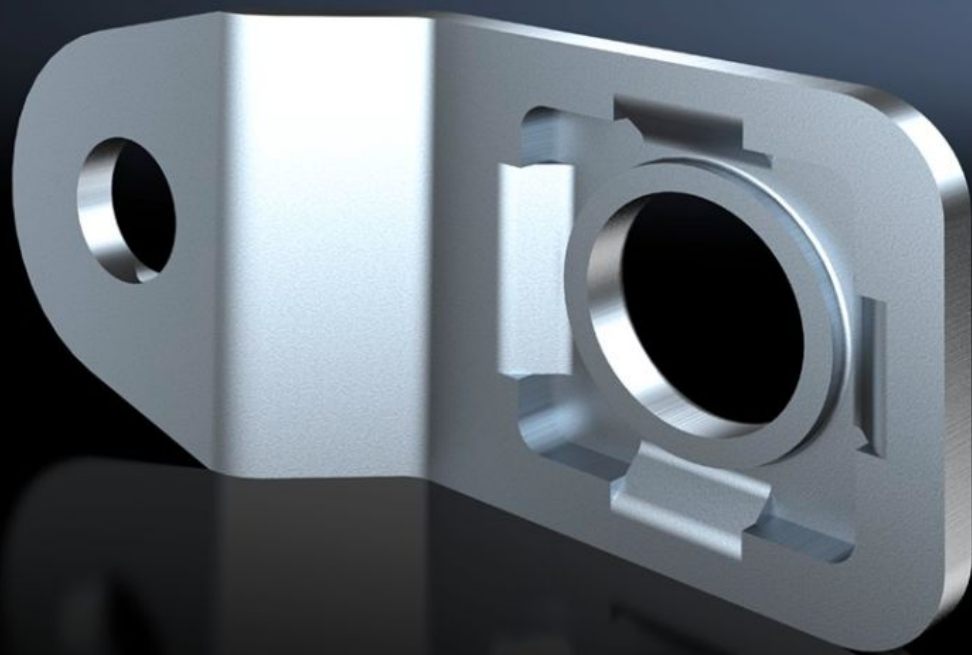


**Rittal – The System.**

Faster – better – everywhere.



**AX 1594.010**

**Wall mounting bracket**

State: 07.05.2026 (Source: [rittal.com/bg-bg](http://rittal.com/bg-bg))

ENCLOSURES

POWER DISTRIBUTION

CLIMATE CONTROL

IT INFRASTRUCTURE

SOFTWARE & SERVICES

FRIEDHELM LOH GROUP



# AX 1594.010 - Wall mounting bracket for AX stainless steel, KX stainless steel, stainless steel switch housing

For wall-mounting AX and KX stainless steel enclosures.



## Features

|                       |   |
|-----------------------|---|
| Model No.             | AX 1594.010   |
| Product description   | For the attachment of AX and KX stainless steel enclosures.   |
| Material              | Stainless steel 1.4301 (AISI 304)   |
| Supply includes       | Assembly parts  |
| Wall distance         | 10 mm   |
| Note                  | For hygiene reasons, and to retain the protection category, the stainless steel enclosures do not have any drilled holes for wall mounting. |
| To fit                | Enclosure type: AX stainless steel<br>KX stainless steel  |
| Packs of              | 4 pc(s).  |
| Net weight            | 0,12 kg   |
| Gross weight          | 0,152 kg  |
| Customs tariff number | 83025000  |
| ETIM 9                | EC002625  |
| ETIM 8                | EC002625  |
| ECLASS 8.0            | 27189234  |

# Features

---

Product description

SZ Wall mounting bracket, for AX and KX, stainless steel, wall distance: 10 mm

# Approvals

---

Approvals

UL + C-UL - FTTA