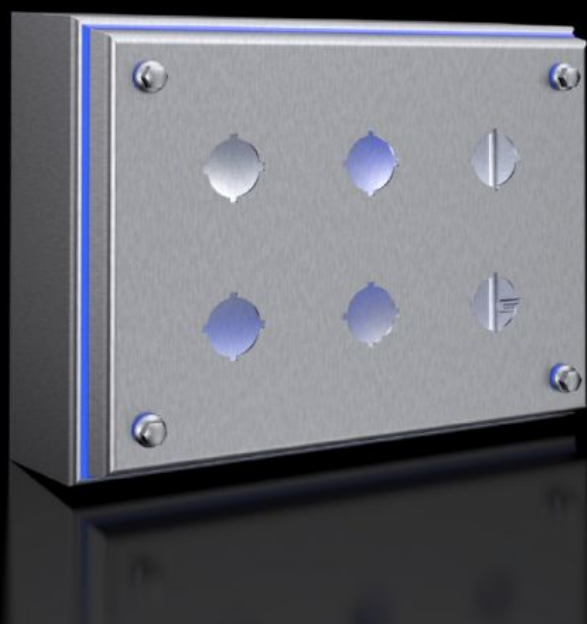


Rittal – The System.

Faster – better – everywhere.



HD 1686.600 Switch housing HD

State: 07.12.2025 (Source: [rittal.com/bg-bg](https://www.rittal.com/bg-bg))

ENCLOSURES

POWER DISTRIBUTION

CLIMATE CONTROL

IT INFRASTRUCTURE

SOFTWARE & SERVICES

FRIEDHELM LOH GROUP



HD 1686.600 - Switch housing HD

Enclosure solution with six cut-outs for switches, tailored to the requirements of the food and beverage industry. All-round gap-free silicone seal between enclosure and cover. Hygiene-compliant quick-release hexagon fastener.



Features

Model No.	HD 1686.600
Design	Hygienic Design enclosure
Material	Enclosure and cover: Stainless steel 1.4301 (AISI 304) 1.5 mm Screw plug: Stainless steel Seal: Silicone, compliant with FDA Guideline 21 CFR 177.2600
Surface finish	Enclosure and cover: Brushed, grain 400, peak-to-valley height < 0.8 µm Seal: Blue, dyed (RAL 5010)
Supply includes	Enclosure of all-round solid construction Cover with switch cut-out Seal and screw plug (supplied loose)
Dimensions	Width front: 160 mm Width (rear): 182 mm Height, front: 220 mm Height rear: 242 mm Depth: 90 mm
Pitch pattern	60 mm
Cut-outs (quantity x diameter)	6 x 22.5 mm

Features

IK Code	IK08
Basic material	Stainless steel 1.4301 (AISI 304)
Lock	Lock version: Hygiene-compliant quick-release hexagon fastener Number of locks: 4
IP protection category to IEC 60529	IP 66 IP X9
Protection category NEMA	NEMA 1 NEMA 3 NEMA 3X NEMA 4 NEMA 4X NEMA 12 NEMA 13
Type rating to UL 50E	Type 1 Type 3 Type 3X Type 4 Type 4X Type 12 Type 13
Packs of	1 pc(s).
Net weight	1.92
Gross weight	2.12
Customs tariff number	84879090
EAN	4028177965942
ETIM 9	EC002713
ETIM 8	EC002713
ECLASS 8.0	27180101

Approvals

Approvals

Approvals	UL + C-UL (listed)
Explanations	Declaration of conformity Declaration of conformity UK

Tender text

HD Switch housing

Enclosure consisting of body and cover.

Body folded and welded in one piece,
with all-round, removable blue silicone seal
compliant to FDA-guideline 21 CFR 177.2600
body tilted by 3° for optimum cleaning,
in accordance with EHEDG guidelines.

Cover on top, tilted by 3°
with six cut-outs each 22.5 mm for six switches
four hygienic hexagonal screw plugs with
all-round sealing ring between enclosure and cover,
protective conductor connection in cover and body

Material:

Body and cover: stainless steel 1.4301 (AISI 304) 1,5 mm

Screw plug: stainless steel

Seal: silicone, compliant with FDA guideline 21 CFR 177.2600

Surface finish:

Body and cover: brushed, grain 400,

peak-to-valley height: < 0,8 µm

Seal: blue, dyed (RAL 5010)

Protection class IP according to IEC 60 529: IP 66, IPX9

Type rating according to UL 50E: Type 13, 3R, 4X

Model No.: 1686600

Dimensions (W x H x D): 160 x 220 x 90 mm