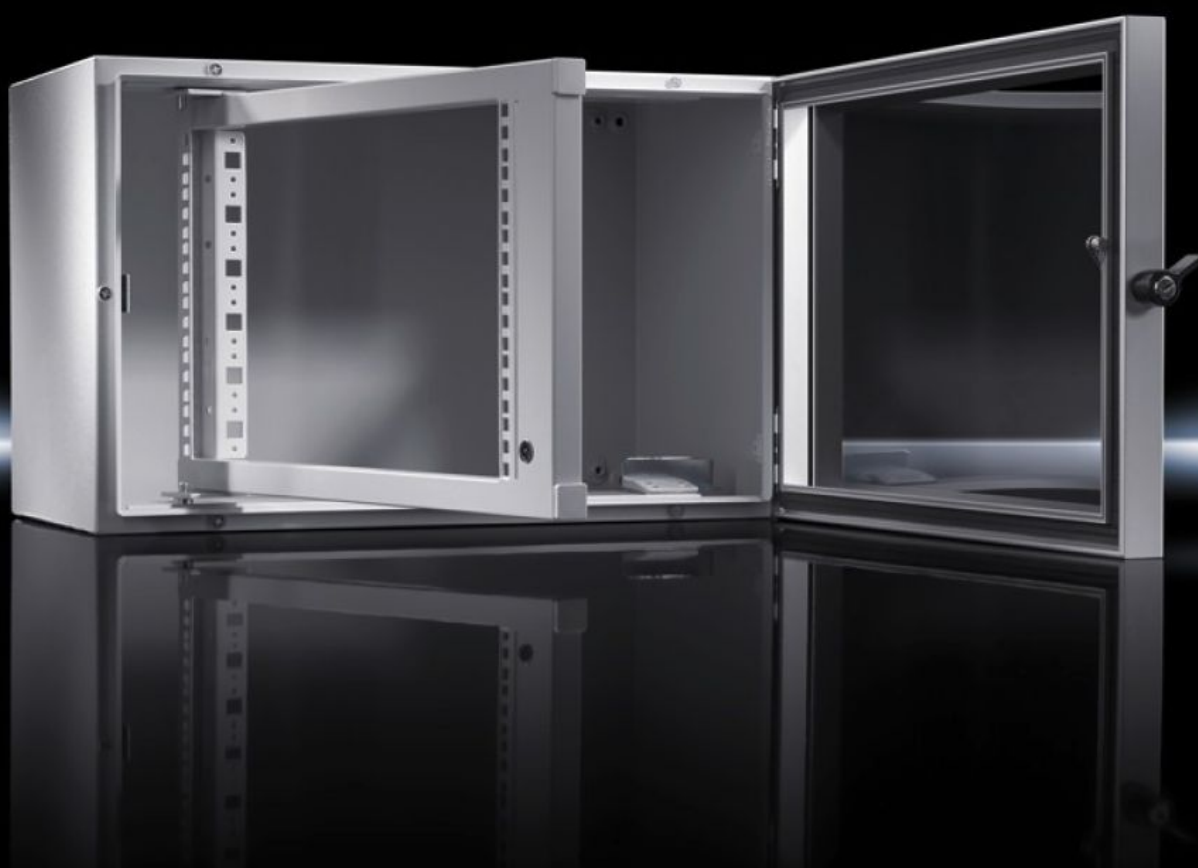


# Rittal – The System.

Faster – better – everywhere.



## EL 1920.500

## Wall-mounted enclosure EL, 2-part

State: 11.07.2025 (Source: [rittal.com/bg-bg](http://rittal.com/bg-bg))

ENCLOSURES

POWER DISTRIBUTION

CLIMATE CONTROL

IT INFRASTRUCTURE

SOFTWARE & SERVICES

FRIEDHELM LOH GROUP



# EL 1920.500 - Wall-mounted enclosure EL, 2-part with swing frame

Wall-mounted enclosure EL, 2-part, with swing frame Protection category IP 55.

## Features

Model No.	EL 1920.500
Design	with swing frame
Product description	Wall-mounted enclosure with optimum accessibility thanks to swing frame.
Material	Enclosure: Sheet steel 1.5 mm Swing frame: Sheet steel Front door: Extruded aluminium section, acrylic glazing, 3 mm
Surface finish	Enclosure and swing frame: Primed and powder-coated Front door: Anodised
Colour	Enclosure and swing frame: RAL 7035 Front door: Silver
Supply includes	Enclosure Front door Swing frame, 482.6 mm (19"), fitted Assembly parts
Units	11 U
Dimensions	Width: 600 mm Height: 600 mm Depth: 369 mm
Installation depth	270 mm
Clearances	Clearance width: 537 mm Clearance height: 537 mm
Basic material	Aluminium
Protection category to IEC 60 529	IP 55

# Features

OUT_DISTANCE_FROM_GLAZED_DOOR_TO_SWING_FRAME	67 - 97 mm
Packs of	1 pc(s).
Net weight	25.4
Gross weight	26.7
EAN	4028177462908
ECLASS 8.0	27142408

# Approvals

Approvals	Lloyds Register of Shipping
-----------	-----------------------------

# Tender text

Electronic enclosure (2-part),  
protection category IP 55

Enclosure: 1.5 mm welded steel sheet construction with protection channel around the front. Rear panel with wall mounting holes and sealed gland plate in the baseplate. Integrated swing frame made from 1.5 mm steel sheet with

glazed door: 3 mm glazed acrylic in dark brown anodised aluminium profile frame with concealed hinges.

Side locking device has a plastic handle with security lock insert (locking device 3524 E).

Accessories: Slide rails, plastic gland plates, wall mounting bracket, earthing straps, heat exchangers, fan-and-filter units, subracks, electronic system accessories

Surface finish: Panels cleaned, degreased, phosphated, electrophoretic dipcoat primed and powder-coated with polyester powder in textured RAL 7035.

External dimensions (W x H x D): 600 x 600 x 369 mm