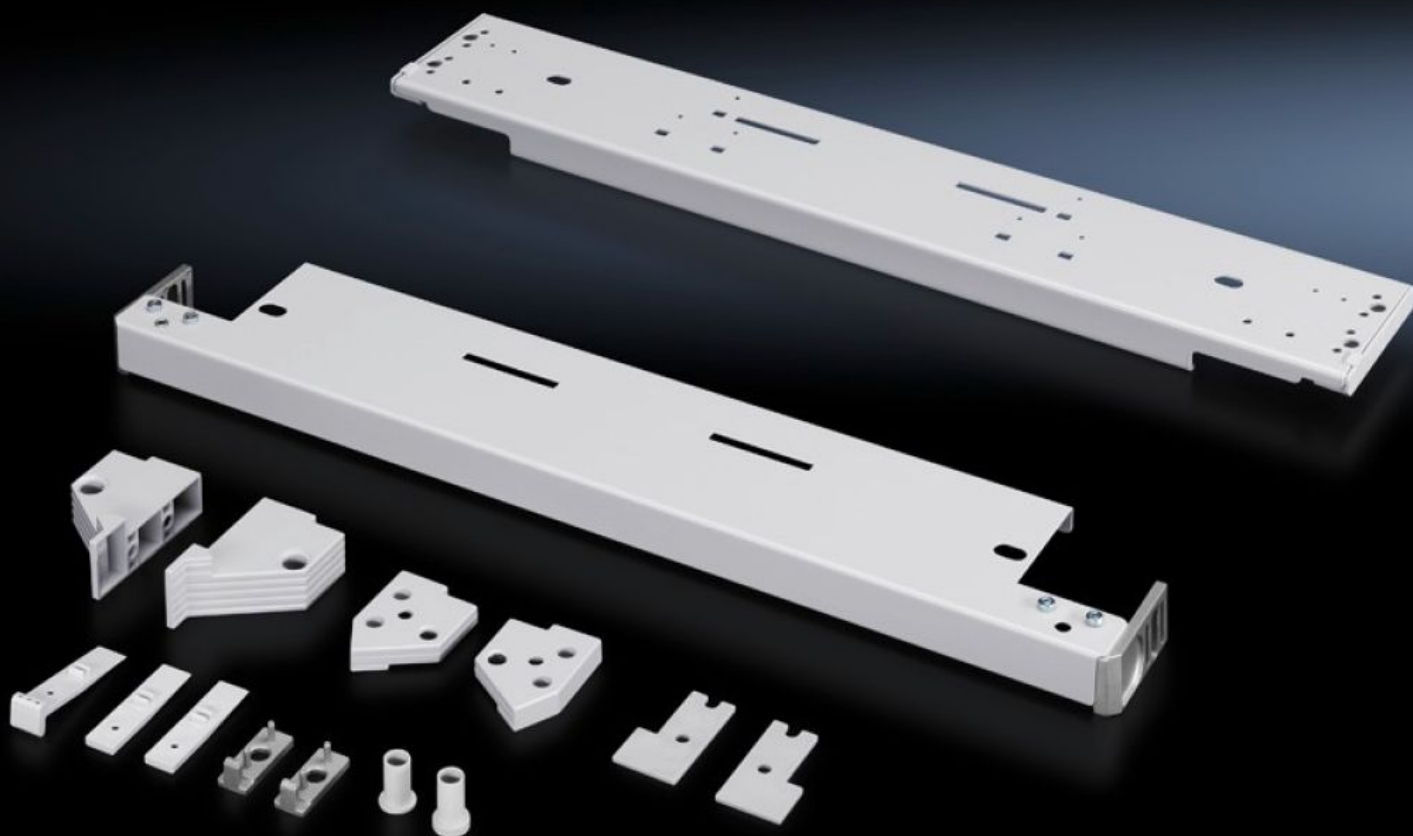


# Rittal – The System.

Faster – better – everywhere.



## SR 1997.235 Installation kit

State: 28.08.2025 (Source: [rittal.com/bg-bg](http://rittal.com/bg-bg))

ENCLOSURES

POWER DISTRIBUTION

CLIMATE CONTROL

IT INFRASTRUCTURE

SOFTWARE & SERVICES

FRIEDHELM LOH GROUP



# SR 1997.235 - Installation kit for swing frame, large, with trim panel

For installing a large swing frame with trim panel.

## Features

Model No.	SR 1997.235
Material	Sheet steel
Colour	RAL 7035
Supply includes	Assembly parts for mounting on the enclosure
Opening angle	180°
Installation options	On swing frame with 482.6 mm (19") level, side On swing frame with 482.6 mm (19") level, central
Load capacity (static)	1200 N
Note to permissible static load max.	Maximum load 800 N with the TS mounting plate slide rail dismantled.
To fit	Enclosure type: TS SE Width: = 800 mm
To fit enclosure type	TS SE
Packs of	1 pc(s).
Net weight	5.804
Gross weight	6.109
Customs tariff number	83024900
EAN	4028177164949
ETIM 9	EC002625
ETIM 8	EC002625
ECLASS 8.0	27189234

# Tender text

## Installation kit for swing frames in network enclosures

With the installation kit swing frames can be installed in a 800 mm wide network enclosure. The installation kit is attached to the 25 mm DIN pitch pattern of holes and is depth-adjustable. If the swing frame is partially installed in the network enclosure, it is also height-adjustable in the 25 mm pitch pattern of holes. The opening angle of the swing frame is 180°

Material: sheet steel

Colour: RAL 7035