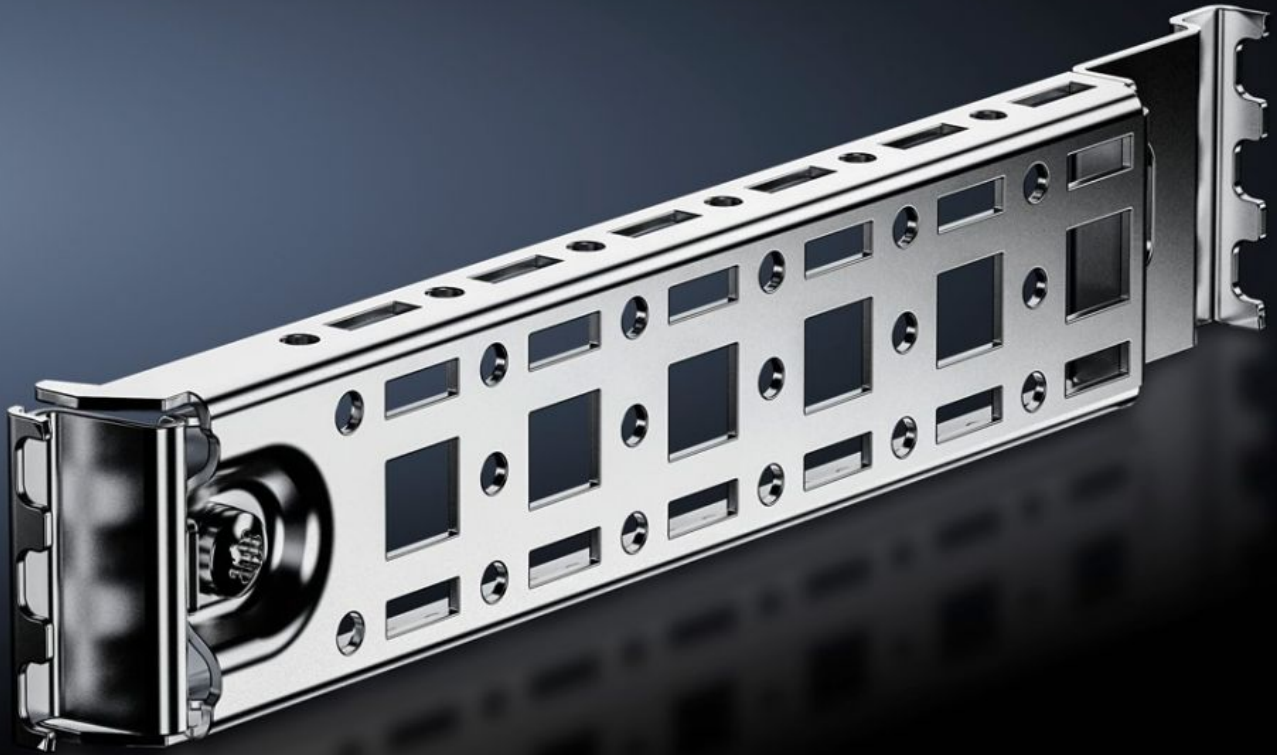


Rittal – The System.

Faster – better – everywhere.



AX 2393.250

Rail for interior installation AX

State: 07.05.2026 (Source: rittal.com/bg-bg)

ENCLOSURES

POWER DISTRIBUTION

CLIMATE CONTROL

IT INFRASTRUCTURE

SOFTWARE & SERVICES

FRIEDHELM LOH GROUP



AX 2393.250 - Rail for interior installation AX

For mounting in the enclosure, no machining required. Suitable for mounting on the side, base and roof up to a load of 25 N using the locators integrated into the enclosure.

Features

Model No.	AX 2393.250
Product description	For mounting in the enclosure, no machining required. Suitable for mounting on the side, base and roof up to a load of 25 N using the locators integrated into the enclosure lights, door-operated switch, door stay, cable conduit holder enclosure. Variable with 2 rows of system punchings, creates additional mounting space e.g. for: Punched section with mounting flange 14 x 39 mm, enclosure lights, door-operated switch, door stay, cable conduit holder.
Benefits	Only one screw for attaching the rail inside the enclosure Including adaptor for door-operated switch Compatibility with VX25 accessories Enclosure protection category is retained (no machining required) Automatic potential equalisation May be retro-fitted even with the mounting plate in situ. Suitable for installation via gland plates
Material	Sheet steel
Surface finish	Zinc-plated
Assembly instruction	For installing LED system light, only in conjunction with mounting bracket for interior installation
To fit	Enclosure type: AX Depth: = 250 mm
Packs of	4 pc(s).
Net weight	0,628 kg
Gross weight	0,72 kg
Customs tariff number	73269098
ECLASS 8.0	27189234
Product description	AX Rail for interior installation, for D: 250 mm