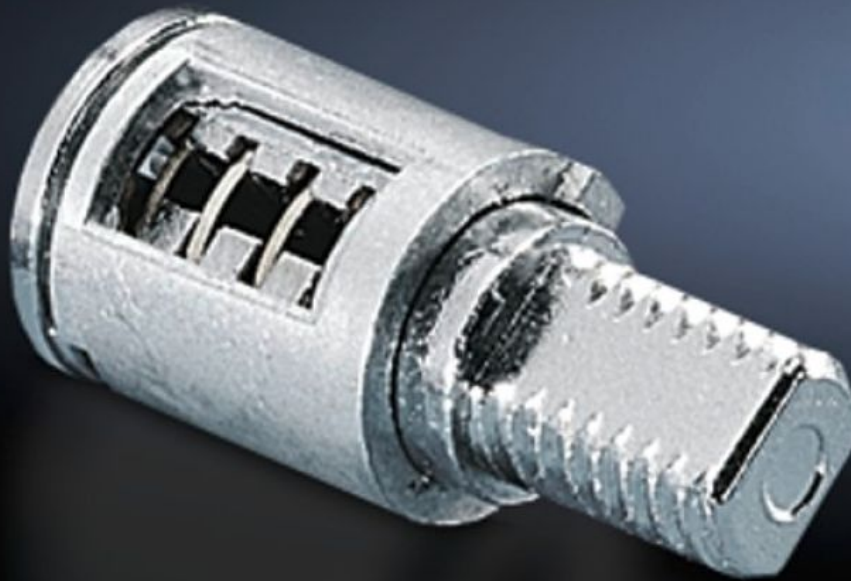


**Rittal – The System.**

Faster – better – everywhere.



# SZ 2525.000

## Lock cylinder inserts

State: 03.04.2026 (Source: [rittal.com/bg-bg](http://rittal.com/bg-bg))

ENCLOSURES

POWER DISTRIBUTION

CLIMATE CONTROL

IT INFRASTRUCTURE

SOFTWARE & SERVICES

FRIEDHELM LOH GROUP



# SZ 2525.000 - Lock cylinder inserts

Lock cylinder inserts, lock no. 3524 E for cam locks.



## Features

Model No.	SZ 2525.000
Design	C
Material	Die-cast zinc
Supply includes	with 2 keys
Length	28,3 mm
Lock	Lock insert: with cylinder insert, lock no. 3524 E
To fit enclosure type	AE with stainless steel cam 1.4301 (AISI 304) One-piece console - stainless steel console cover
Packs of	1 pc(s).
Net weight	0,036 kg
Gross weight	0,037 kg
Customs tariff number	83016000
ETIM 9	EC000743
ETIM 8	EC000743

# Features

---

ECLASS 8.0

27409218

---

Product description

SZ Lock cylinder, version C, with lock cylinder insert, Lock no. 3524  
E