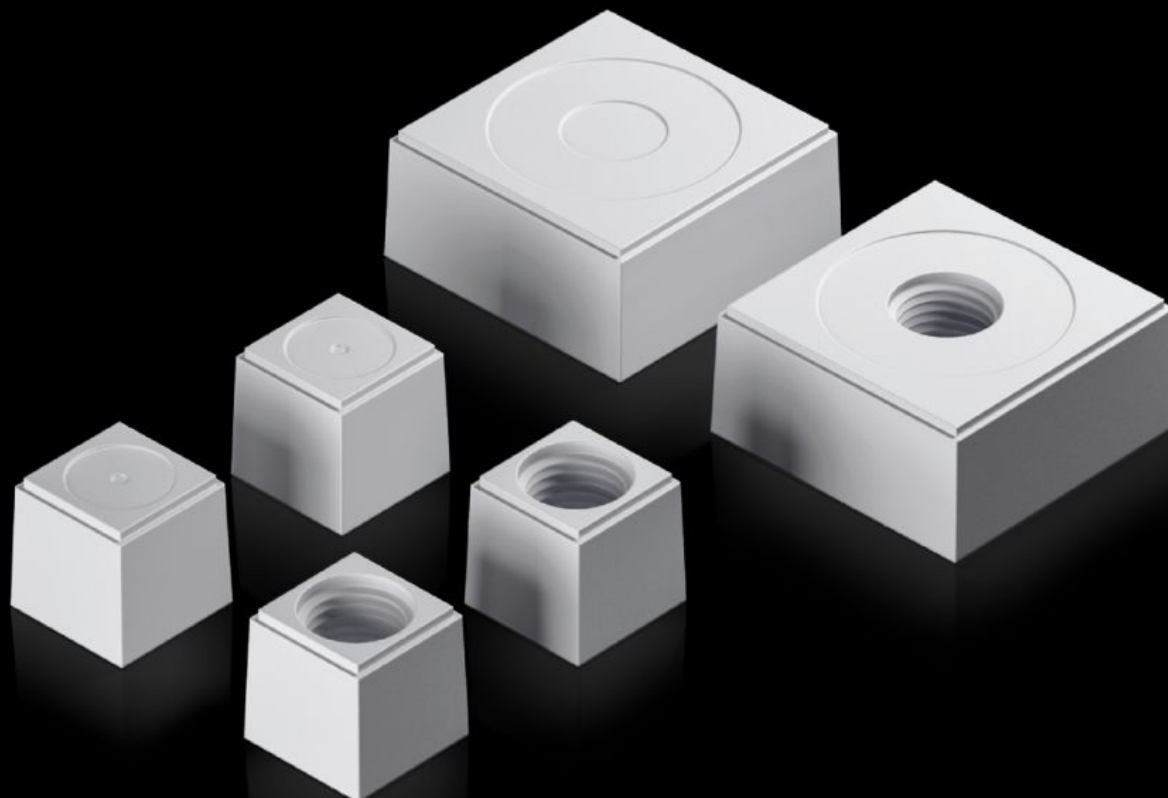


Rittal – The System.

Faster – better – everywhere.



AX 2580.116

Seal insert

State: 02.09.2025 (Source: [rittal.com/bg-bg](https://www.rittal.com/bg-bg))

ENCLOSURES

POWER DISTRIBUTION

CLIMATE CONTROL

IT INFRASTRUCTURE

SOFTWARE & SERVICES

FRIEDHELM LOH GROUP



AX 2580.116 - Seal insert For plastic gland plate, modular and sealing frame, modular

The slotted seal inserts, in conjunction with the inlays, allow individual cable entry, even with preassembled cables.

Features

| | |
|-----------------------|--|
| Model No. | AX 2580.116 |
| Design | Seal insert, large |
| Product description | The slotted seal inserts, in conjunction with the inlays, allow individual cable entry, even with preassembled cables. |
| Material | Plastic |
| Colour | RAL 7035 |
| Type rating to UL 50E | Type 1 Type 12 Type 4X indoor use only |
| For cable diameter | 16 mm |
| Packs of | 5 pc(s). |
| Net weight | 0.105 |
| Gross weight | 0.155 |
| Customs tariff number | 40082900 |
| EAN | 4028177939769 |
| ETIM 9 | EC000441 |
| ETIM 8 | EC000441 |
| ECLASS 8.0 | 27149109 |

Approvals

Approvals

Approvals

UR + C-UR (recognized)