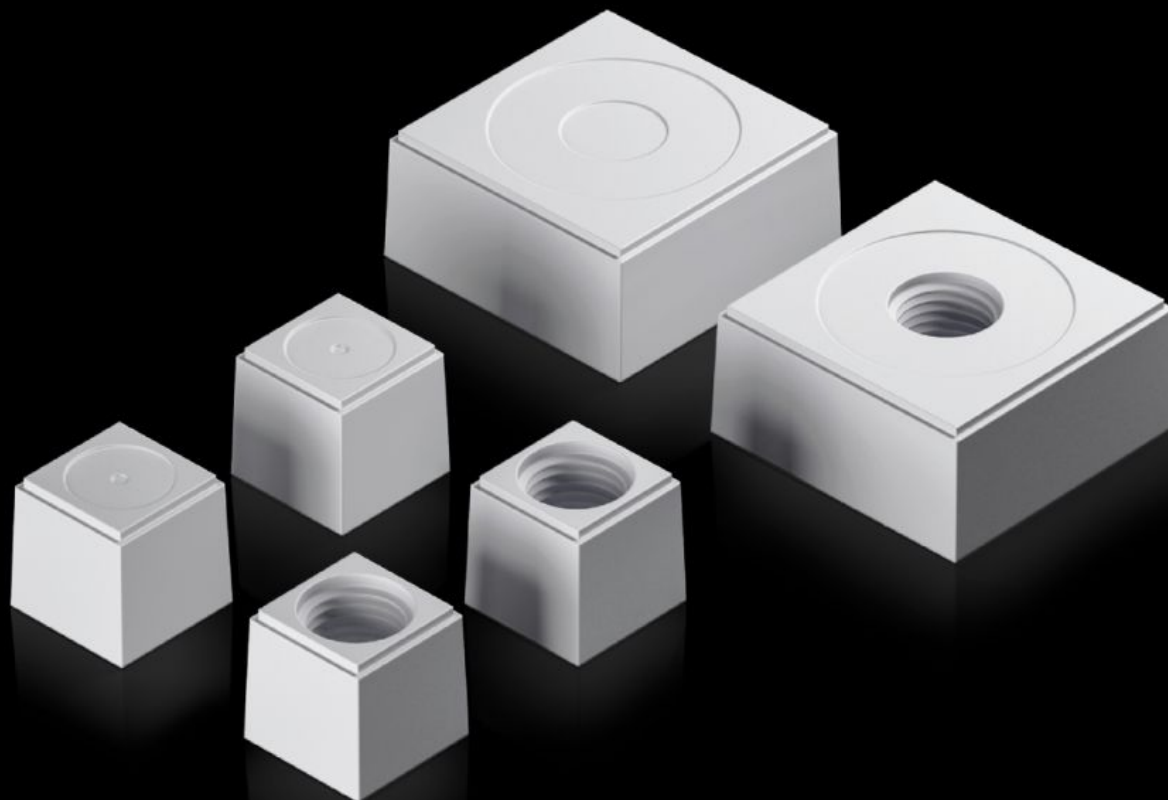


Rittal – The System.

Faster – better – everywhere.



AX 2580.125 Seal insert

State: 02.04.2026 (Source: rittal.com/bg-bg)

ENCLOSURES

POWER DISTRIBUTION

CLIMATE CONTROL

IT INFRASTRUCTURE

SOFTWARE & SERVICES

FRIEDHELM LOH GROUP



AX 2580.125 - Seal insert For plastic gland plate, modular and sealing frame, modular

The slotted seal inserts, in conjunction with the inlays, allow individual cable entry, even with preassembled cables.

Features

Model No.	AX 2580.125
Design	Seal insert, large
Product description	The slotted seal inserts, in conjunction with the inlays, allow individual cable entry, even with preassembled cables.
Material	Plastic
Colour	RAL 7035
Type rating to UL 50E	Type 1 Type 12 Type 4X indoor use only
For cable diameter	25 mm
Packs of	5 pc(s).
Net weight	0,12 kg
Gross weight	0,127 kg
Customs tariff number	40082900
ETIM 9	EC000441
ETIM 8	EC000441
ECLASS 8.0	27149109
Product description	SZ Seal inserts, for cable entry, modular, large, for cable diameter 25 mm

Approvals

Approvals

UR + C-UR (recognized)