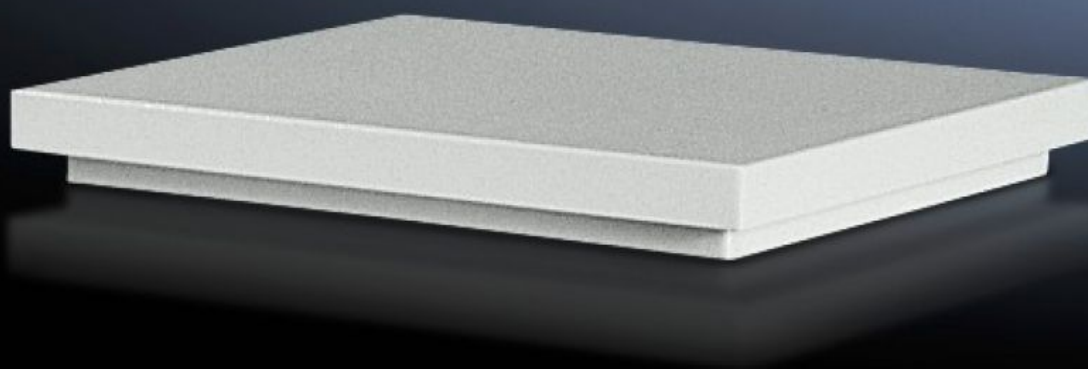


Rittal – The System.

Faster – better – everywhere.



SK 3169.007

Roof-mounted fan, roof vent

State: 15.06.2025 (Source: [rittal.com/bg-bg](https://www.rittal.com/bg-bg))

ENCLOSURES

POWER DISTRIBUTION

CLIMATE CONTROL

IT INFRASTRUCTURE

SOFTWARE & SERVICES

FRIEDHELM LOH GROUP



SK 3169.007 - Roof-mounted fan, roof vent

May be installed in any sufficiently large roof surface, air throughput 360 m³/h.

Features

Model No.	SK 3169.007
Design	Unit ready for connection with built-in radial fan
Product modification	Mounting cut-outs are not compatible. If reusing the roof plate, adaptor frame 5050.700 is required.
Material	Sheet steel, spray-finished
Colour	RAL 7035
Supply includes	Sealing and assembly parts Drilling template Connection cable (3 m)
Rated operating voltage	115 V, 1~, 50 Hz/60 Hz
Power consumption Pel	At 50 Hz: 65 W
Rated current max.	At 50 Hz: 0.55 A
Dimensions	Width: 420 mm Height: 95 mm Depth: 340 mm
Mounting cut-out	Cut-out width: 345 mm Cut-out depth: 265 mm
IP protection category to IEC 60529	IP 43
Note	Via additional installation of the filter holder with filter mat, a protection category of IP 44 is achieved with roof vent 3148.007
Operating temperature range	-10 °C...60 °C
Noise level	At 50 Hz: 53 dB(A)
Packs of	1 pc(s).
Net weight	5.828

Features

Gross weight	6.135
Customs tariff number	84145915
EAN	4028177165359
ECLASS 8.0	27180716