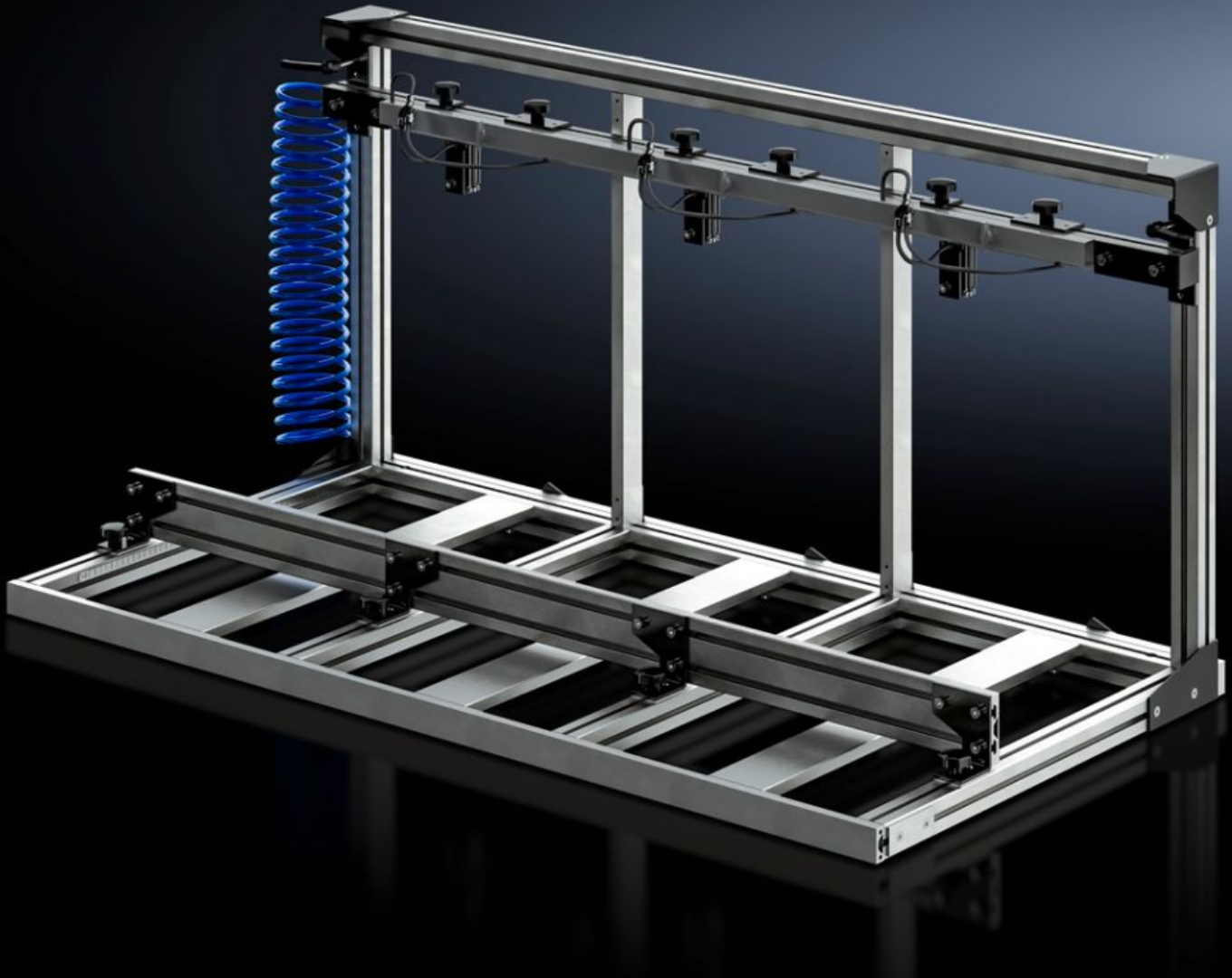


Rittal – The System.

Faster – better – everywhere.



AS 4050.060 Clamping frame

State: 25.06.2026 (Source: rittal.com/bg-bg)

ENCLOSURES

POWER DISTRIBUTION

CLIMATE CONTROL

IT INFRASTRUCTURE

SOFTWARE & SERVICES

FRIEDHELM LOH GROUP



AS 4050.060 - Clamping frame

Parallel machining of enclosures in the cube machining zone of Perforex machining centres BC and Perforex milling terminals MT for shorter setup times and enhanced productivity.

Features

Model No.	AS 4050.060
Design	Pneumatic clamping device
Product description	Enables parallel cube machining of enclosures on Perforex machining centres BC and Perforex milling terminals MT.
Possible number of terminal Boxes for parallel processing	3
Note	Use of the clamping frame (Model No. 4050.080) in the machining centre BC (Model No. 4050.230) is only possible with the two-door variant.
To fit Model No.	4050.101 4055.910 4055.911
Suitable for	Perforex BC 1001 HS Perforex MT 1101 Perforex MT 1101 S
Dimensions of clampable enclosures max.	Width: 200 mm Height: 300 mm Depth: 300 mm
Dimensions of clampable enclosures min.	Width: 85 mm Height: 70 mm Depth: 70 mm
Packs of	1 pc(s).
Net weight	25 kg
Gross weight	25 kg
Customs tariff number	84669360
ETIM 9	EC003010

Features

ETIM 8	EC003010
ECLASS 8.0	36609190
Product description	AS Multiple fastening, BC 1001, Clamping frame for several small enclosures, - 3 clamping positions in the frame, - Pneumatic clamping device, - Min. enclosure dimensions (W x H x D): 85 x 70 x 70 mm
