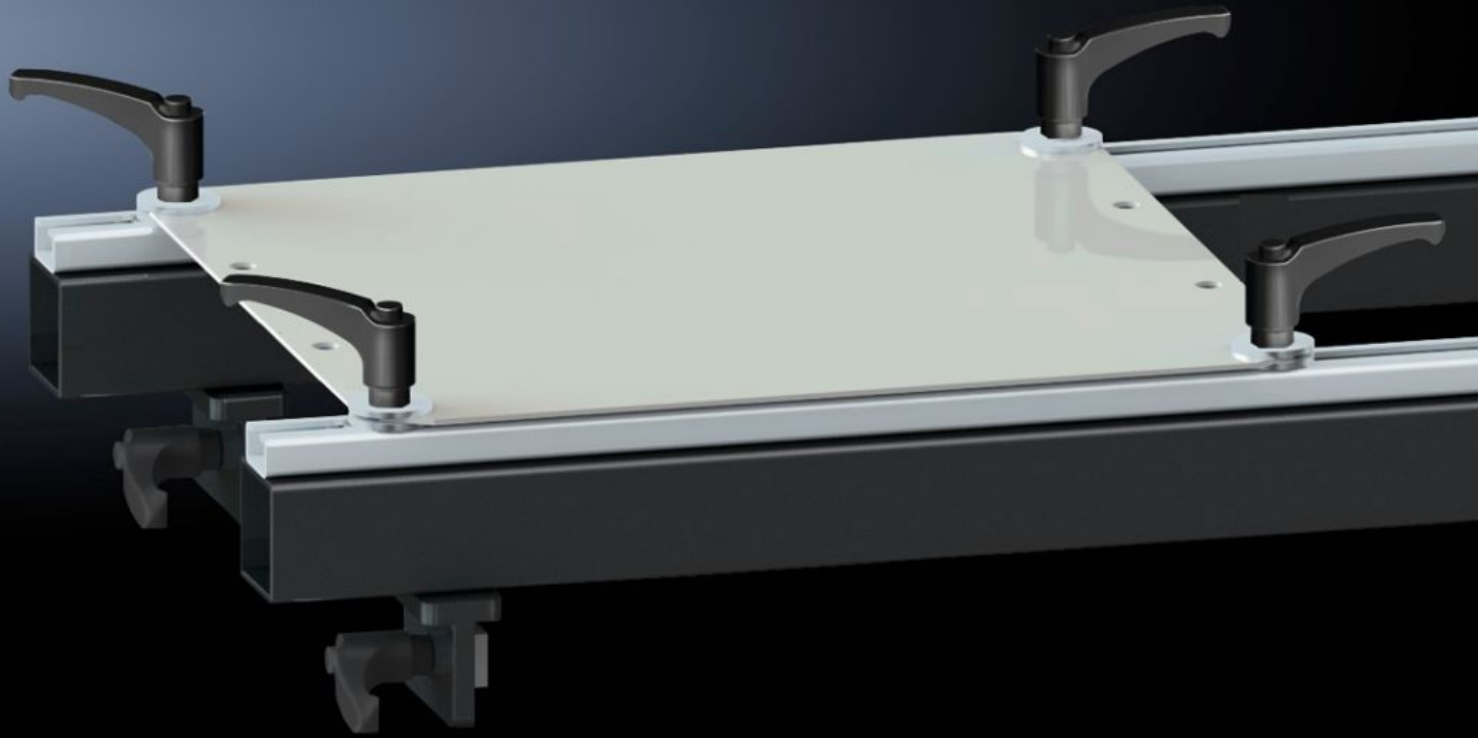


**Rittal – The System.**

Faster – better – everywhere.



# AS 4050.221

## Set of brackets

State: 19.06.2026 (Source: [rittal.com/bg-bg](http://rittal.com/bg-bg))

ENCLOSURES

POWER DISTRIBUTION

CLIMATE CONTROL

IT INFRASTRUCTURE

SOFTWARE & SERVICES

FRIEDHELM LOH GROUP



# AS 4050.221 - Set of brackets for assembly frame

For secure attachment of a mounting plate onto the assembly frames 150 MN, 200 EN and 300 ENH.

## Features

Model No.	AS 4050.221
Product description	For secure attachment of a mounting plate onto the assembly frames 150 MN, 200 EN, 300 ENH.
Supply includes	4 cover caps 12 handles 2 holders 16 washers 12 sliding blocks
To fit Model No.	4050.150 4050.200 4050.300
Packs of	1 pc(s).
Net weight	15,3 kg
Gross weight	16 kg
Customs tariff number	73269098
ETIM 9	EC001231
ETIM 8	EC001231
ECLASS 8.0	36659290
Product description	Mounting device AE, for assembly frame