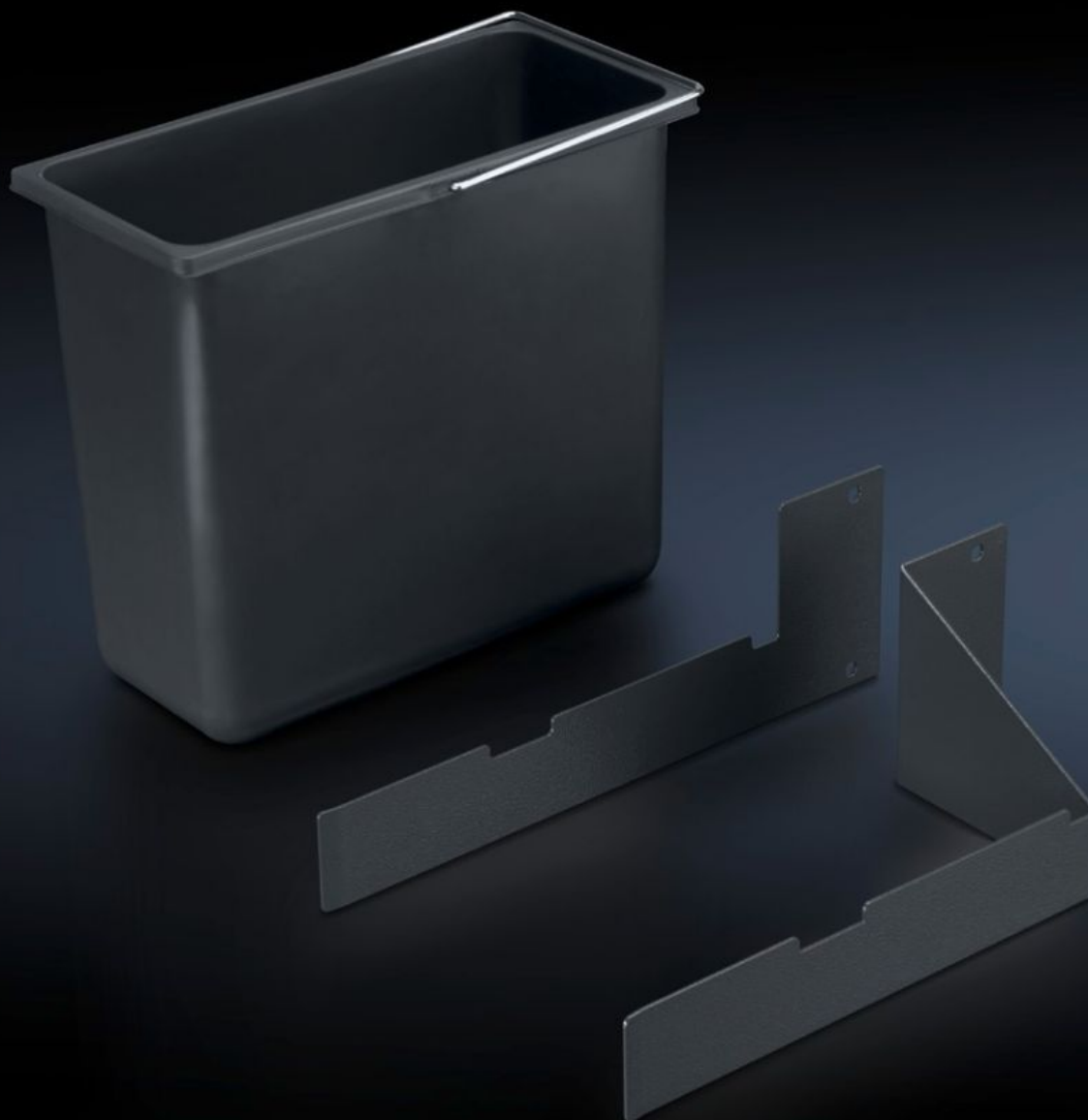


Rittal – The System.

Faster – better – everywhere.



AS 4051.115 Waste bin

State: 23.08.2025 (Source: [rittal.com/bg-bg](https://www.rittal.com/bg-bg))

ENCLOSURES

POWER DISTRIBUTION

CLIMATE CONTROL

IT INFRASTRUCTURE

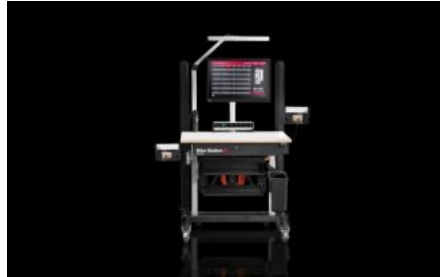
SOFTWARE & SERVICES

FRIEDHELM LOH GROUP



AS 4051.115 - Waste bin for WS 540

For waste disposal directly at the workstation.



Features

Model No.	AS 4051.115
Product description	For waste disposal directly at the workstation.
Benefits	Front mounting without impairing legroom
Technical specifications	Dimensions (W x H x D): 150 x 290 x 320 mm Capacity: 12 litres
Material	Plastic
Colour	Dark grey
Supply includes	Waste bin Bracket Assembly parts
To fit Model No.	4051.100
Packs of	1 pc(s).
Net weight	1.4
Gross weight	2.3
Customs tariff number	39211900

Features

EAN	4028177957503
ETIM 9	EC002778
ETIM 8	EC002778
ECLASS 8.0	36629090