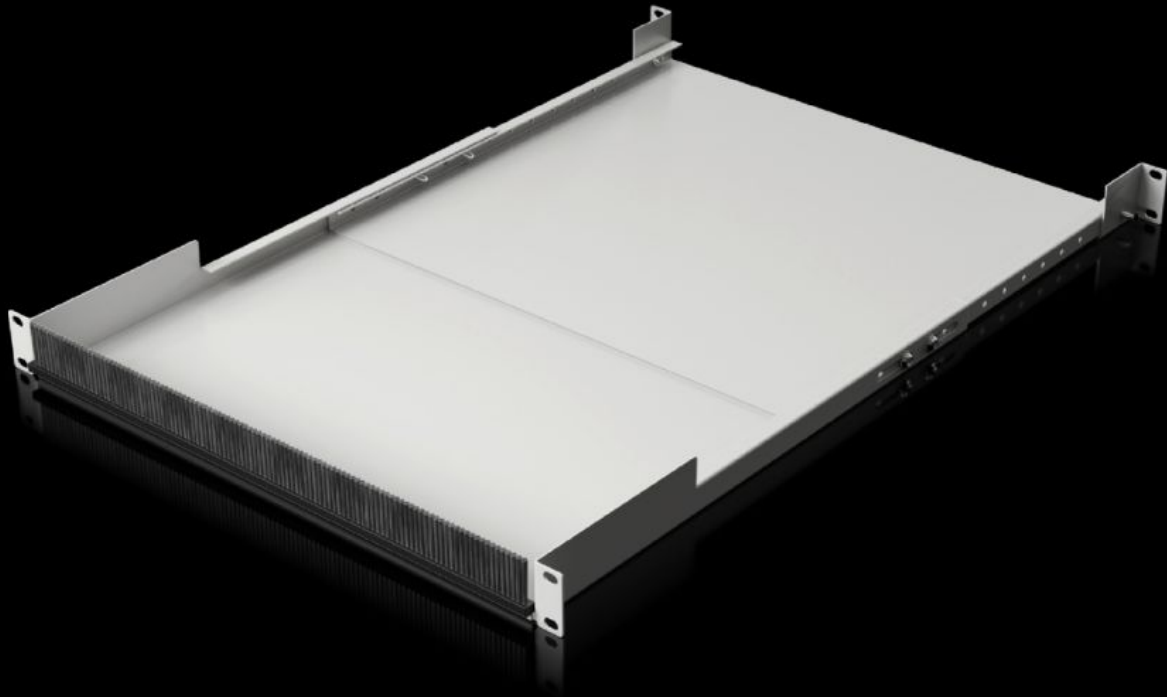


**Rittal – The System.**

Faster – better – everywhere.



**IT 5302.042**

**482.6 mm (19") cable link, depth-variable**

State: 26.06.2026 (Source: [rittal.com/bg-bg](http://rittal.com/bg-bg))

ENCLOSURES

POWER DISTRIBUTION

CLIMATE CONTROL

IT INFRASTRUCTURE

SOFTWARE & SERVICES

FRIEDHELM LOH GROUP



# IT 5302.042 - 482.6 mm (19") cable link, depth-variable

Within the 482.6 mm (19") mounting level, the cable link provides an integrated cable routing option between the front and rear mounting levels inside an enclosure.

## Features

Model No.	IT 5302.042
Product description	A user-friendly way of creating integrated cable routing between the front and rear 482.6 mm (19") mounting levels within the enclosure.
Benefits	<p>Cable entry at the front via brush strip for thermal partitioning of the cable entry zone</p> <p>Direct cable routing between the patch level and component with rear installation, optimum cable routing with switch mounted at the rear</p> <p>Fully depth-variable with versatile, infinitely adjustable extension of the cable link</p> <p>Prevents incorrect airflow by partitioning the transition</p> <p>Open at the top for easy retrofitting, even with cables already inserted</p> <p>Cable link extendible upwards by 1 U, by using an additional cable entry panel with brush strip</p>
Material	Sheet steel Brush strip: Plastic, UL 94-V0
Surface finish	Spray-finished
Colour	RAL 9005
Supply includes	Cable link Brush strip
Installation options	For attachment between the front and rear 482.6 mm (19") mounting level
Distance between levels	500 - 750 mm
Units	1 U
Load capacity (static)	150 N
To fit	for enclosure-independent mounting

# Features

Note	Assembly parts should be ordered separately
Packs of	1 pc(s).
Net weight	6,8 kg
Gross weight	7,239 kg
PCF per pack (cradle-to-gate)	PCF-Wert 18,78 kg Co <sup>2</sup> e
Customs tariff number	73269098
Product description	19" cable bridge, depth-variable, 500 - 750 mm, RAL 9005