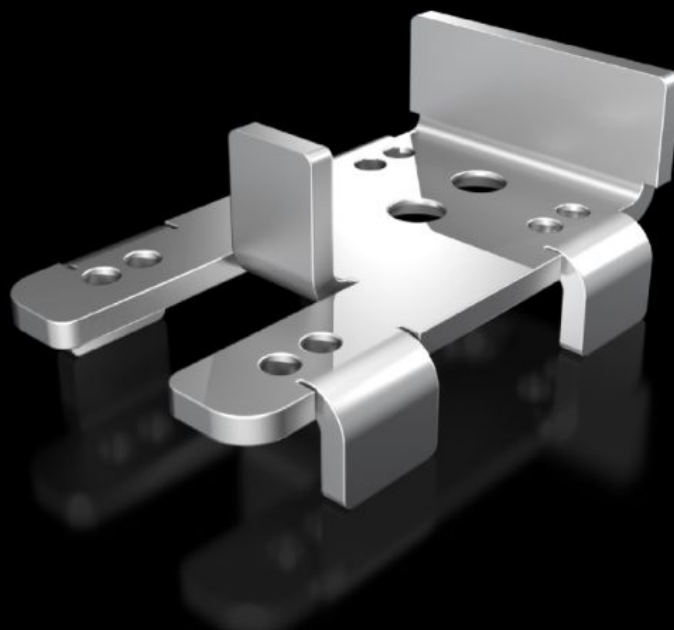
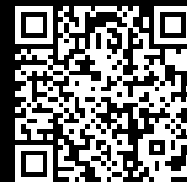


Rittal – The System.

Faster – better – everywhere.



VX 5302.351 Mounting bracket

State: 02.04.2026 (Source: rittal.com/bg-bg)

ENCLOSURES

POWER DISTRIBUTION

CLIMATE CONTROL

IT INFRASTRUCTURE

SOFTWARE & SERVICES

FRIEDHELM LOH GROUP



VX 5302.351 - Mounting bracket for door operated switches in VX, VX IT, TX CableNet

For attaching a door-operated switch to the enclosure frame.

Features

| | |
|-----------------------|--|
| Model No. | VX 5302.351 |
| Product description | To secure a door-operated switch to the frame of the VX, VX IT and TX CableNet in conjunction with the various door variants in these enclosure systems. Depending on the door variant, this is secured to the horizontal frame section at the top or onto the vertical sections at the sides. |
| Supply includes | Assembly parts |
| Packs of | 1 pc(s). |
| Net weight | 0,065 kg |
| Gross weight | 0,069 kg |
| Customs tariff number | 83024900 |
| ETIM 9 | EC002620 |
| ECLASS 8.0 | 27189234 |
| Product description | Mounting bracket to secure a door-operated switch to the frame of the VX, VX IT in conjunction with the various door variants in the VX, VX IT enclosure system. |